

Basic Report



Title: Bangle Bracelet
Date: c. 1900
Medium: gold (14K) with glass



Title: Bangle Bracelet
Date: c. 1900
Medium: gold (14K) with glass



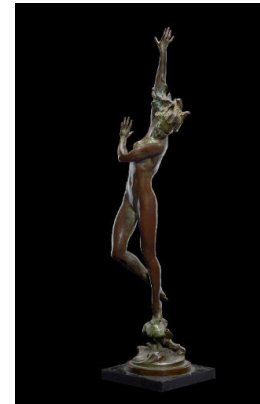
Title: Cake Plate
Date: c. 1900
Primary Maker: Pairpoint Manufacturing Company
Medium: cut glass



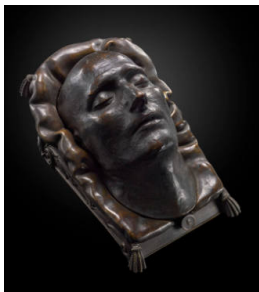
Title: Coffee Cup
Primary Maker: Manufacture Nationale de Sèvres
Medium: porcelain



Title: Creamer
Primary Maker: Manufacture Nationale de Sèvres
Medium: porcelain



Title: Crest of the Wave
Date: 1925
Primary Maker: Harriet Whitney Frishmuth
Medium: cast bronze



Title: Death Mask of Napoleon
Date: 1833
Primary Maker: Dr. François Carlo Antommarchi
Medium: cast bronze



Title: Demitasse Saucer
Primary Maker: Manufacture Nationale de Sèvres
Medium: porcelain



Title: Dinner Plate
Primary Maker: Rue Thiroux
Medium: porcelain



Title: Dinner Plate
Primary Maker: Manufacture Nationale de Sèvres
Medium: porcelain



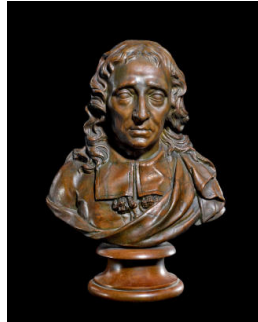
Title: Figurine
Date: c. 1900
Primary Maker: Saxon Porcelain Manufactory
Medium: porcelain



Title: Hair Piece
Primary Maker: Unknown French
Medium: lace



Title: Jabot
Date: 18th Century
Primary Maker: Unknown French
Medium: lace; fabric



Title: John Milton
Medium: cast bronze



Title: Lemonade Set Pitcher
Date: c. 1900
Primary Maker: Pairpoint Manufacturing Company
Medium: cut glass



Title: Lemonade Set Tumbler
Date: c. 1900
Primary Maker: Pairpoint Manufacturing Company
Medium: cut glass



Title: Lemonade Set Tumbler
Date: c. 1900
Primary Maker: Pairpoint Manufacturing Company
Medium: cut glass



Title: Locket
Medium: gold, metal, and glass with diamond



Title: Locket
Medium: gold, metal, and glass with diamond



Title: Model T Roadster
Date: 1922
Primary Maker: Ford Motor Company
Medium: assembled metal



Title: Napoleon's Retreat from Russia
Primary Maker: Antonio Vanetti
Medium: cast bronze with white marble base



Title: Plate
Date: c. 1900
Primary Maker: Gorham Manufacturing Company
Medium: sterling silver



Title: Roadster
Date: 1911
Primary Maker: Hupp Motor Car Company
Medium: assembled metal



Title: Service Plate
Date: 1891 - 1932
Primary Maker: W. M. Guérin & Company
Medium: porcelain



Title: Serving Tray
Date: c. 1900
Primary Maker: T.G. Hawkes & Company
Medium: cut glass



Title: Sugar Bowl
Primary Maker: Manufacture Nationale de Sèvres
Medium: porcelain



Title: Sugar Bowl Lid
Primary Maker: Manufacture Nationale de Sèvres
Medium: porcelain



Title: Super Sport

Date: 1950

Primary Maker: Crosley Motor Company

Medium: assembled metal, leather



Title: Teapot

Primary Maker: Manufacture Nationale de Sèvres

Medium: porcelain



Title: Teapot Lid

Primary Maker: Manufacture Nationale de Sèvres

Medium: porcelain



Title: Vase

Date: c. 1900

Primary Maker: T.G. Hawkes & Company

Medium: cut glass



Title: Vase

Date: c. 1900

Primary Maker: T.G. Hawkes & Company

Medium: cut glass



Title: Vase

Date: c. 1900

Primary Maker: Unknown American

Medium: cut glass



Title: Water Pitcher

Date: 1906

Primary Maker: Gorham Manufacturing Company

Medium: sterling silver



Title: Whisky Bottle

Date: c. 1900

Medium: cut glass



Title: Whisky Bottle

Stopper

Date: c. 1900

Medium: cut glass



Title: William Shakespeare
Medium: cast bronze