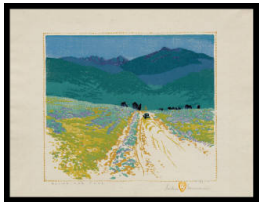


# Basic Report

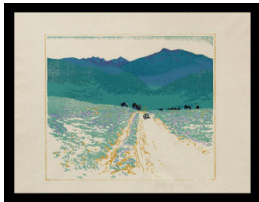
---



**Title:** Bound for Taos  
**Date:** 1930-1936  
**Primary Maker:** Gustave Baumann  
**Medium:** color woodcut on flax fiber paper



**Title:** Bound for Taos, Black, Blue, Purple, and Green Proof  
**Date:** 1936  
**Primary Maker:** Gustave Baumann  
**Medium:** color woodcut on flax fiber paper



**Title:** Bound for Taos, Black, Blue, Purple, Green and Ochre Proof  
**Date:** 1930-1936  
**Primary Maker:** Gustave Baumann  
**Medium:** color woodcut on flax fiber paper



**Title:** Bound for Taos, Black, Blue, Purple Proof  
**Date:** 1936  
**Primary Maker:** Gustave Baumann  
**Medium:** color woodcut on flax fiber paper



**Title:** Bound for Taos (Black Proof)  
**Date:** 1930-1936  
**Primary Maker:** Gustave Baumann  
**Medium:** color woodcut on flax fiber paper



**Title:** Bound for Taos, Blue and Black Proof  
**Date:** 1930-1936  
**Primary Maker:** Gustave Baumann  
**Medium:** color woodcut on flax fiber paper



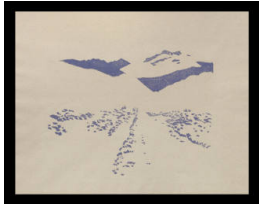
**Title:** Bound for Taos, Blue Proof  
**Date:** 1930-1936  
**Primary Maker:** Gustave Baumann  
**Medium:** color woodcut on flax fiber paper



**Title:** Bound for Taos, Green Proof  
**Date:** 1936  
**Primary Maker:** Gustave Baumann  
**Medium:** color woodcut on flax fiber paper



**Title:** Bound for Taos, Ochre Proof  
**Date:** 1930-1936  
**Primary Maker:** Gustave Baumann  
**Medium:** color woodcut on flax fiber paper



**Title:** Bound for Taos,  
**Purple Proof**  
**Date:** 1930-1936  
**Primary Maker:** Gustave  
Baumann  
**Medium:** color woodcut on flax  
fiber paper



**Title:** Bound for Taos,  
**Yellow and Blue Proof**  
**Date:** 1930-1936  
**Primary Maker:** Gustave  
Baumann  
**Medium:** color woodcut on flax  
fiber paper