

# Basic Report

---



**Title:** Across the Sage  
**Date:** c. 1924-1925  
**Primary Maker:** Ernest Martin Hennings  
**Medium:** lithograph on paper



**Title:** Basket  
**Date:** c. 1900  
**Primary Maker:** Tlingit  
**Medium:** woven spruce root and dyed grass



**Title:** Basket  
**Date:** c. 1900  
**Primary Maker:** Tlingit  
**Medium:** woven spruce root and natural dyes



**Title:** Basket  
**Date:** c. 1900-1920  
**Primary Maker:** Apache  
**Medium:** woven willow and devil's claw



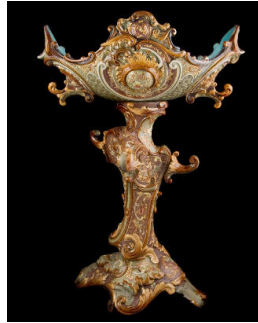
**Title:** Blackburnian Warbler  
**Date:** November 1960  
**Primary Maker:** Charley Harper  
**Medium:** serigraph on paper



**Title:** Cardinal and Seed  
**Date:** November 1960  
**Primary Maker:** Charley Harper  
**Medium:** serigraph on paper



**Title: Celery Vase**  
**Primary Maker:** Unknown  
American  
**Medium:** glass



**Title: Centerpiece**  
**Primary Maker:** Wilhelm  
Schiller  
**Medium:** earthenware glazed  
Majolica with metal



**Title: A Chief of the  
Multnomah Tribe**  
**Date:** 1905  
**Primary Maker:** Hermon  
Atkins MacNeil  
**Medium:** cast bronze



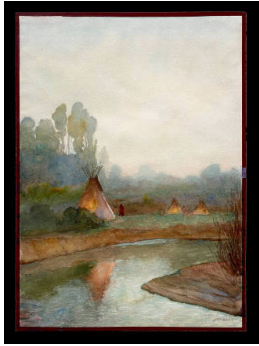
**Title: Convicts**  
**Date:** c. 1953  
**Primary Maker:** Andy  
Anderson  
**Medium:** carved basswood,  
hand-painted



**Title: Corner Cabinet**  
**Date:** c. 1950  
**Primary Maker:** Andy  
Anderson  
**Medium:** carved wood, hand-  
painted



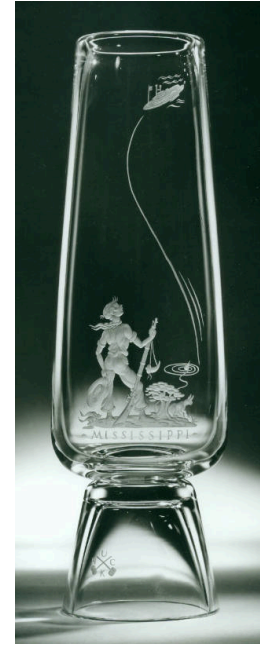
**Title: Cowboy on Burro,  
Two Pack Animals**  
**Date:** c. 1925  
**Primary Maker:** Oscar  
Edmund Berninghaus  
**Medium:** Etching on paper



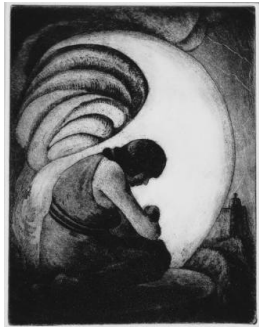
**Title:** Early Moonlight on the Little Horn, Montana  
**Primary Maker:** Joseph Henry Sharp  
**Medium:** watercolor on paper



**Title:** Eastern Kingbirds  
**Date:** November 1960  
**Primary Maker:** Charley Harper  
**Medium:** serigraph on paper



**Title:** Huckleberry Finn  
**Date:** c. 1955  
**Primary Maker:** Bruce Moore  
**Medium:** engraved blown crystal



**Title:** Indian Madonna  
**Date:** 1935  
**Primary Maker:** William Howard Shuster  
**Medium:** etching and aquatint on paper



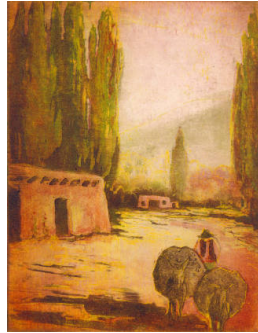
**Title:** Indians at the Pueblo  
**Date:** 1945  
**Primary Maker:** Oscar Edmund Berninghaus  
**Medium:** pencil, pen and ink, and gouache on paper



**Title:** Jar  
**Date:** 1400-1450  
**Primary Maker:** Cochiti Pueblo  
**Medium:** clay with cream slip and black pigment



**Title:** Lady in the Waves  
**Statue**  
**Medium:** marble



**Title:** Man with Burros  
**Date:** c. 1926  
**Primary Maker:** William Howard Shuster  
**Medium:** aquatint on paper, hand-colored



**Title:** Miniature Basket  
**Date:** c. 1900-1910  
**Primary Maker:** Akimel O'odham  
**Medium:** woven yucca, willow and devil's claw



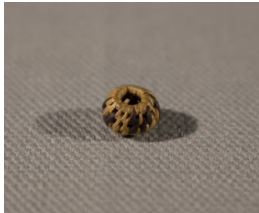
**Title:** Miniature Basket  
**Date:** c. 1900-1910  
**Primary Maker:** Akimel O'odham  
**Medium:** woven yucca, willow and devil's claw



**Title:** Miniature Basket  
**Date:** c. 1900-1910  
**Primary Maker:** Akimel O'odham  
**Medium:** woven yucca, willow and devil's claw



**Title:** Miniature Basket  
**Date:** c. 1900-1910  
**Primary Maker:** Akimel O'odham  
**Medium:** woven yucca, willow and devil's claw



**Title:** Miniature Basket  
**Date:** c. 1900-1910  
**Primary Maker:** Akimel O'odham  
**Medium:** woven yucca, willow and devil's claw



**Title:** Miniature Basket  
**Date:** c. 1900-1910  
**Primary Maker:** Akimel O'odham  
**Medium:** woven yucca, willow and devil's claw



**Title:** Miniature Basket  
**Date:** c. 1900-1910  
**Primary Maker:** Akimel O'odham  
**Medium:** woven yucca, willow and devil's claw



**Title:** Miniature Basket  
**Date:** c. 1900-1910  
**Primary Maker:** Akimel  
O'odham  
**Medium:** woven yucca, willow  
and devil's claw



**Title:** Miniature Plaque  
**Date:** c. 1900-1910  
**Primary Maker:** Akimel  
O'odham  
**Medium:** woven yucca, willow  
and devil's claw



**Title:** Miniature Plaque  
**Date:** c. 1900-1910  
**Primary Maker:** Akimel  
O'odham  
**Medium:** woven yucca, willow  
and devil's claw



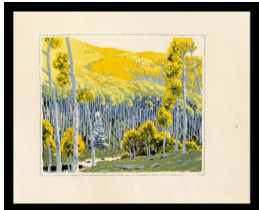
**Title:** Moonlight, Camp  
on the Little Big Horn,  
Montana  
**Date:** c. 1908  
**Primary Maker:** Joseph Henry  
Sharp  
**Medium:** oil on canvas



**Title:** Mountain Gold  
**Date:** c. 1920-1926  
**Primary Maker:** Gustave  
Baumann  
**Medium:** woodcut on flax fiber  
paper



**Title:** Mountain Gold  
(Black, Blue and Yellow  
Proof)  
**Date:** c. 1920  
**Primary Maker:** Gustave  
Baumann  
**Medium:** woodcut on flax fiber  
paper



**Title:** Mountain Gold  
(Black, Blue, Yellow and  
Gold Proof)  
**Date:** c. 1920  
**Primary Maker:** Gustave  
Baumann  
**Medium:** woodcut on flax fiber  
paper



**Title:** Mountain Gold  
(Black Proof)  
**Date:** c. 1920  
**Primary Maker:** Gustave  
Baumann  
**Medium:** woodcut on flax fiber  
paper



**Title:** Mountain Gold  
(Black Wood Block)  
**Date:** 1920  
**Primary Maker:** Gustave  
Baumann  
**Medium:** basswood wood block





**Title: Mountain Gold  
(Blue Proof)**

**Date:** c. 1920

**Primary Maker:** Gustave  
Baumann

**Medium:** woodcut on flax fiber  
paper



**Title: Mountain Gold  
(Blue Wood Block)**

**Date:** c. 1920

**Primary Maker:** Gustave  
Baumann

**Medium:** basswood wood block



**Title: Mountain Gold  
(Gold Proof)**

**Date:** c. 1920

**Primary Maker:** Gustave  
Baumann

**Medium:** woodcut on flax fiber  
paper



**Title: Mountain Gold  
(Gold Wood Block)**

**Date:** c. 1920

**Primary Maker:** Gustave  
Baumann

**Medium:** basswood wood block



**Title: Mountain Gold  
(Green Proof)**

**Date:** c. 1920

**Primary Maker:** Gustave  
Baumann

**Medium:** woodcut on flax fiber  
paper



**Title: Mountain Gold  
(Green Wood Block)**

**Date:** c. 1920

**Primary Maker:** Gustave  
Baumann

**Medium:** basswood wood block



**Title: Mountain Gold  
(Yellow Proof)**

**Date:** c. 1920

**Primary Maker:** Gustave  
Baumann

**Medium:** woodcut on flax fiber  
paper



**Title: Mountain Gold  
(Yellow Wood Block)**

**Date:** c. 1920

**Primary Maker:** Gustave  
Baumann

**Medium:** basswood wood block



**Title: Murres**

**Date:** November 1960

**Primary Maker:** Charley  
Harper

**Medium:** serigraph on paper



**Title:** Native French Woman  
**Date:** 1927  
**Primary Maker:** Ernest Martin Hennings  
**Medium:** oil on canvas



**Title:** Old Man Sitting on Bench  
**Date:** c. 1955  
**Primary Maker:** Andy Anderson  
**Medium:** carved basswood, hand-painted



**Title:** Perfume Bottle  
**Primary Maker:** Morlee Glass  
**Medium:** cut glass



**Title:** Perfume Bottle Stopper  
**Primary Maker:** Morlee Glass  
**Medium:** cut glass



**Title:** Pitcher  
**Medium:** earthenware



**Title:** Platter  
**Date:** c. 1879  
**Primary Maker:** Gillinder & Sons  
**Medium:** pressed glass



**Title:** Powder Jar  
**Date:** c. 1910  
**Primary Maker:** Rookwood Pottery Company  
**Medium:** earthenware with matte glaze



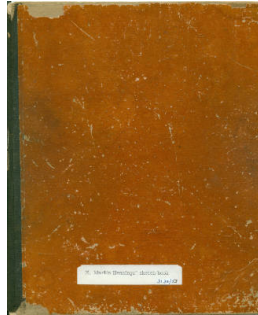
**Title:** Powder Jar Lid  
**Date:** c. 1910  
**Primary Maker:** Rookwood Pottery Company  
**Medium:** earthenware with matte glaze



**Title:** Ptarmigan  
**Date:** November 1960  
**Primary Maker:** Charley Harper  
**Medium:** serigraph on paper



**Title:** Red-winged Blackbirds  
**Date:** November 1960  
**Primary Maker:** Charley Harper  
**Medium:** serigraph on paper



**Title:** Sketchbook  
**Date:** c. 1926  
**Primary Maker:** Ernest Martin Hennings  
**Medium:** pencil on paper, bound



**Title:** Sketch for Mountain Gold  
**Date:** 1918  
**Primary Maker:** Gustave Baumann  
**Medium:** Pencil and pastel on paper



**Title:** Snowy Owl  
**Date:** November 1960  
**Primary Maker:** Charley Harper  
**Medium:** serigraph on paper



**Title:** Spanish Water Carrier, Graza lema, Spain  
**Date:** c. 1926-1927  
**Primary Maker:** Ernest Martin Hennings  
**Medium:** oil on canvas



**Title:** Starlings  
**Date:** November 1960  
**Primary Maker:** Charley Harper  
**Medium:** serigraph on paper



**Title:** Storage Basket  
**Primary Maker:** Choctaw  
**Medium:** woven split cane with dyed cane in herringbone pattern



**Title:** The Story  
**Date:** 1925  
**Primary Maker:** Lorentz Kleiser  
**Medium:** woven with silk and wool; vegetable dyes



**Title:** A Street in Taos, New Mexico  
**Primary Maker:** Oscar Edmund Berninghaus  
**Medium:** lithograph with white highlights on toned buff paper

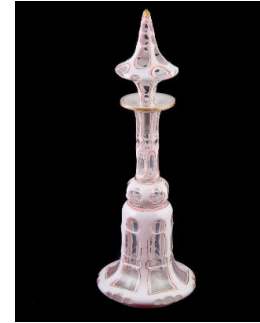




**Title:** Tepee Village  
**Primary Maker:** Joseph Henry Sharp  
**Medium:** pastel on paper



**Title:** Toast Cup  
**Date:** c. 1902  
**Primary Maker:** Artus Van  
Briggle  
**Medium:** earthenware with  
matte glaze



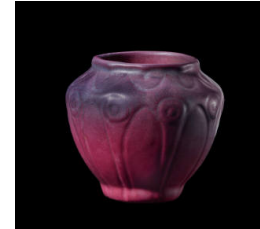
**Title:** Toilet Bottle  
**Medium:** blown glass



**Title:** Toilet Bottle  
**Medium:** blown glass



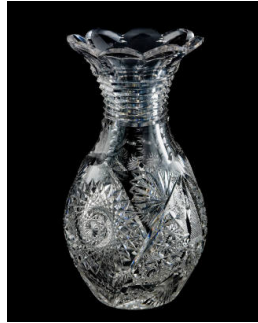
**Title:** Tom Sawyer  
**Date:** c. 1955  
**Primary Maker:** Bruce Moore  
**Medium:** engraved blown  
crystal



**Title:** Vase  
**Date:** 1920 - 1922  
**Primary Maker:** Van Briggles Pottery  
**Medium:** earthenware with matte glaze



**Title: Vase**  
**Date:** mid-20th century  
**Primary Maker:** Van Briggie Pottery  
**Medium:** earthenware with Ming blue glaze



**Title: Vase**  
**Date:** c. 1900  
**Primary Maker:** Unknown American  
**Medium:** cut glass



**Title: Vase**  
**Primary Maker:** Unknown American  
**Medium:** flint glass



**Title: Vase**  
**Date:** c. 1932  
**Primary Maker:** Rookwood Pottery Company  
**Medium:** earthenware with flambé glaze



**Title: Vase**  
**Date:** c. 1900  
**Primary Maker:** Lenore Asbury  
**Medium:** earthenware with glaze



**Title: Vase**  
**Date:** 1915 - 1925  
**Primary Maker:** Fulper Pottery Company  
**Medium:** earthenware with lavender glaze



**Title: Vase**  
**Date:** 1915 - 1920  
**Primary Maker:** Fulper Pottery Company  
**Medium:** earthenware with jade glaze



**Title: Vase**  
**Date:** 1915 - 1925  
**Primary Maker:** Fulper Pottery Company  
**Medium:** earthenware with green-ice blue glaze



**Title: Vase**  
**Date:** c. 1910  
**Primary Maker:** Carl Schmidt  
**Medium:** earthenware with glaze



**Title: Vase**

**Date:** c. 1901

**Primary Maker:** Josephine Ella Zettel

**Medium:** earthenware with green glaze



**Title: Vase**

**Date:** 1922

**Primary Maker:** Kataro Shirayamadani

**Medium:** earthenware with black iris glaze



**Title: Vase**

**Date:** c. 1910

**Primary Maker:** Rookwood Pottery Company

**Medium:** porcelain with glaze



**Title: Woman Tourist Photographing Indian and Dog**

**Primary Maker:** Andy Anderson

**Medium:** carved wood, hand-painted



**Title: Wood Duck**

**Date:** November 1960

**Primary Maker:** Charley Harper

**Medium:** serigraph on paper



**Title: Wood Thrush**

**Date:** November 1960

**Primary Maker:** Charley Harper

**Medium:** serigraph on paper