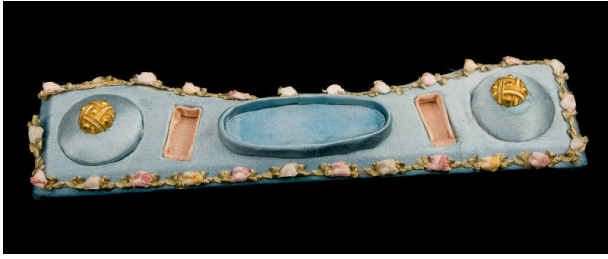


Basic Detail Report



silk with metal

Sewing Box Tray

Date

c. 1900

Primary Maker

Unknown French

Medium

Description

Rectangular shape; padded blue silk; raised oval shaped compartment in center; depressed pink silk compartment on either side of center; pink silk base; pink and green rosebud silk trim around edge; two raised circular gold colored metal fittings (possibly gold leaf due to lack of tarnish or patina).

Dimensions

1 1/2 x 13 x 3 inches (3.8 x 33 x 7.6 cm)