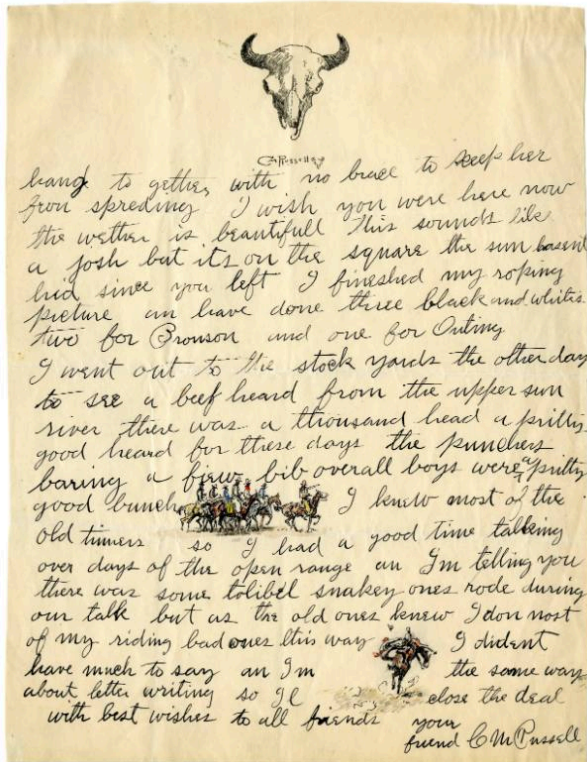


# Basic Detail Report



## Ho Ho Hayee, Friend Goodwin [To Philip R. Goodwin]

### Date

October 23, 1907

### Primary Maker

Charles Marion Russell

### Medium

pen and ink, and watercolor on paper

### Description

Sheet two is has an illustration of horses and riders.

### Dimensions

10 3/4 x 8 1/4 inches (27.3 x 21 cm) Frame (A&B framed together):

16 1/2 x 22 1/2 x 1 3/8 inches (41.9 x 57.2 x 3.5 cm)