

# Basic Report

---



**Title: Bangle Bracelet**  
**Medium:** metal



**Title: Bangle Bracelet**  
**Date:** c. 1900  
**Medium:** gold



**Title: Bangle Bracelet**  
**Date:** c. 1900  
**Medium:** gold (14K) with glass



**Title: Bangle Bracelet**  
**Date:** c. 1900  
**Medium:** gold (14K) with glass



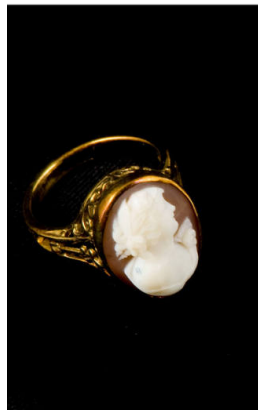
**Title: Bracelet**  
**Date:** c. 1940  
**Primary Maker:** David Taliman  
**Medium:** silver and turquoise



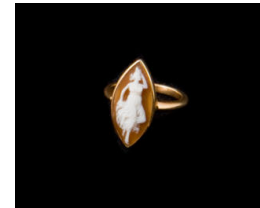
**Title: Cameo Bracelet**  
**Medium:** gold (18K) and coral



**Title: Cameo Necklace**  
**Medium:** gold (18K) and coral



**Title: Cameo Ring**  
**Medium:** gold; agate or shell



**Title: Cameo Ring**  
**Medium:** gold (14K); agate or shell



**Title: Earring**  
**Date:** c. 1954  
**Primary Maker:** Bobby Lujan  
**Medium:** silver with turquoise and mother-of-pearl



**Title: Earring**  
**Date:** c. 1954  
**Primary Maker:** Bobby Lujan  
**Medium:** silver with turquoise and mother-of-pearl



**Title: Enamel Earrings**  
**Medium:** gold with diamonds and enamel



**Title: Enamel Earrings**  
**Medium:** gold with diamonds and enamel



**Title: Knife Wing Pin**  
**Date:** c. 1930  
**Primary Maker:** Quam Family  
**Medium:** cast silver, turquoise, spiny oyster, abalone, jet, and mother-of-pearl



**Title: Locket**  
**Medium:** glass and metal with rhinestone



**Title: Locket**  
**Medium:** gold and metal with glass



**Title: Locket**  
**Medium:** gold, metal, and glass with diamond



**Title: Locket**  
**Medium:** gold, metal, and glass with diamond



**Title: Mourning Jewelry Pendant**  
**Medium:** glass and metal with seed pearls



**Title: Necklace**  
**Date:** c. 1954  
**Primary Maker:** Bobby Lujan  
**Medium:** silver with turquoise and mother-of-pearl



**Title: Pendant**  
**Date:** c. 1920  
**Primary Maker:** Zuni Pueblo  
**Medium:** silver with turquoise, coral, jet and mother-of-pearl, hand crafted



**Title: Pietra Dura Ring**  
**Medium:** stone; gold; seed pearl



**Title: Thunderbird Pin**  
**Date:** c. 1920  
**Primary Maker:** Zuni Pueblo  
**Medium:** cast silver inlaid with jet, mother-of-pearl, shell, and turquoise



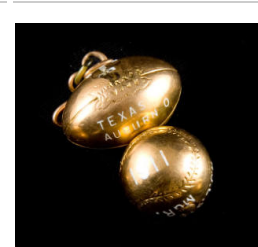
**Title: Watch Fob**  
**Medium:** gold (14K) and fabric with ruby and diamonds



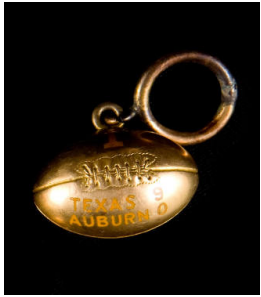
**Title: Watch Fob**  
**Medium:** white gold and diamond with other metal and fabric



**Title: Watch Fob**  
**Medium:** gold, metal, and fabric



**Title: Watch Fob Charm**  
**Date:** after 1910  
**Medium:** gold (14K)



**Title: Watch Fob Charm**

**Date:** after 1910

**Medium:** gold (14K)



**Title: Watch Fob Charm**

**Date:** after 1910

**Medium:** gold (14K)



**Title: Watch Fob Charm**

**Date:** after 1910

**Medium:** gold (14K)