

Basic Report



Title: Alabama
Date: 1950-1959
Primary Maker: Steuben Glass
Medium: engraved crystal



Title: Alaska
Date: 1950-1959
Primary Maker: Steuben Glass
Medium: engraved crystal



Title: Allen's
Hummingbird with Iris
Date: 1992
Primary Maker: Boehm
Porcelain
Medium: porcelain, bisque
fired, hand-painted



Title: American Ballad
Urn, Pioneer
Date: 1943
Primary Maker: Steuben Glass
Medium: engraved crystal



Title: American Ballad
Urn, Pioneer
Date: 1943
Primary Maker: Steuben Glass
Medium: engraved crystal



Title: American Ballad
Urn, Trapper
Date: 1943
Primary Maker: Steuben Glass
Medium: engraved crystal



Title: American Ballad
Urn, Trapper
Date: 1943
Primary Maker: Steuben Glass
Medium: engraved crystal



Title: American Eagle
Date: Issued 1957-1961, c.
1957
Primary Maker: Edward
Marshall Boehm
Medium: porcelain, bisque
fired, hand-painted



Title: American
Goldfinches and Thistle
Date: Issued 1936
Primary Maker: Dorothy
Doughty
Medium: porcelain, hand-
painted



Title: Apple Blossom Sprays

Date: Issued 1941

Primary Maker: Dorothy Doughty

Medium: porcelain, hand-painted

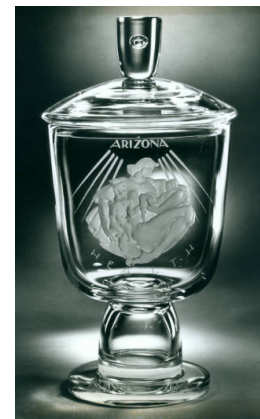


Title: Apple Blossom Sprays

Date: Issued 1941

Primary Maker: Dorothy Doughty

Medium: porcelain, hand-painted



Title: Arizona

Date: 1950-1959

Primary Maker: Steuben Glass

Medium: engraved crystal

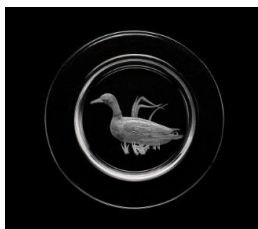


Title: Arkansas

Date: 1950-1959

Primary Maker: Steuben Glass

Medium: engraved crystal



Title: Audubon Plate, Mallard Duck

Date: 1956

Primary Maker: Steuben Glass

Medium: engraved crystal



Title: Baltimore Orioles and Tulip Tree

Date: Issued 1938

Primary Maker: Dorothy Doughty

Medium: porcelain, hand-painted



Title: Baltimore Orioles and Tulip Tree

Date: Issued 1938

Primary Maker: Dorothy Doughty

Medium: porcelain, hand-painted



Title: Blue-Grey Gnatcatchers and Dogwood

Date: Issued 1955

Primary Maker: Dorothy Doughty

Medium: porcelain, hand-painted



Title: Blue-Grey Gnatcatchers and Dogwood

Date: Issued 1955

Primary Maker: Dorothy Doughty

Medium: porcelain, hand-painted



Title: Blue Jays
Date: 1962
Primary Maker: Edward Marshall Boehm
Medium: porcelain, bisque fired, hand-painted



Title: Blue Jay with Strawberries
Date: 1962
Primary Maker: Edward Marshall Boehm
Medium: porcelain, bisque fired, hand-painted



Title: Cactus Wrens and Prickly Pear
Date: Issued 1959
Primary Maker: Dorothy Doughty
Medium: porcelain, hand-painted



Title: Cactus Wrens and Prickly Pear
Date: Issued 1959
Primary Maker: Dorothy Doughty
Medium: porcelain, hand-painted



Title: California
Date: 1950-1959
Primary Maker: Steuben Glass
Medium: engraved crystal



Title: Cardinal with Grape Vine
Date: 1955
Primary Maker: Edward Marshall Boehm
Medium: porcelain, hand-painted, bisque fired



Title: Cardinal with Grape Vine
Date: 1955
Primary Maker: Edward Marshall Boehm
Medium: porcelain, hand-painted, bisque fired



Title: Cerulean Warblers on Wild Rose
Date: 1957
Primary Maker: Edward Marshall Boehm
Medium: porcelain; bisque fired; hand-painted;



Title: Chameleon
Date: 1962
Primary Maker: Edward Marshall Boehm
Medium: porcelain; bisque fired; hand-painted



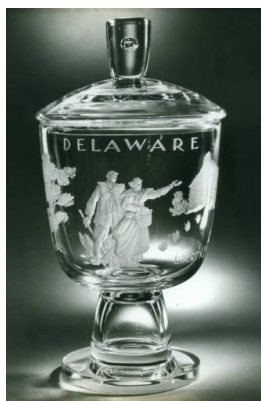
Title: Chickadees and Larch
Date: Issued 1938
Primary Maker: Dorothy Doughty
Medium: porcelain, hand-painted



Title: Colorado
Date: 1950-1959
Primary Maker: Steuben Glass
Medium: engraved crystal



Title: Connecticut
Date: 1950-1959
Primary Maker: Steuben Glass
Medium: engraved crystal



Title: Delaware
Date: 1950-1959
Primary Maker: Steuben Glass
Medium: engraved crystal



Title: Flicker with Chipmunk and Mushrooms
Date: 1971
Primary Maker: Boehm Porcelain
Medium: porcelain, bisque fired, hand-painted



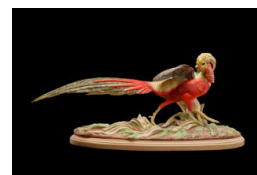
Title: Florida
Date: 1950-1959
Primary Maker: Steuben Glass
Medium: engraved crystal



Title: Georgia
Date: 1950-1959
Primary Maker: Steuben Glass
Medium: engraved crystal



Title: Golden Crowned Kinglet with Oriental Poppies
Date: Issued 1956
Primary Maker: Edward Marshall Boehm
Medium: porcelain, bisque fired, hand-painted



Title: Golden Oriental Pheasant
Date: C. 1955
Primary Maker: Edward Marshall Boehm
Medium: porcelain; bisque fired; hand-painted



Title: Goldfinches with Scottish Thistle

Date: 1961

Primary Maker: Edward Marshall Boehm

Medium: porcelain; bisque fired; hand-colored



Title: Green Jay with Black Persimmon

Date: 1966

Primary Maker: Edward Marshall Boehm

Medium: porcelain, bisque fired, hand-painted



Title: Green Jay with Black Persimmon

Date: 1966

Primary Maker: Edward Marshall Boehm

Medium: porcelain, bisque fired, hand-painted



Title: Hawaii

Date: 1950-1959

Primary Maker: Steuben Glass

Medium: engraved crystal

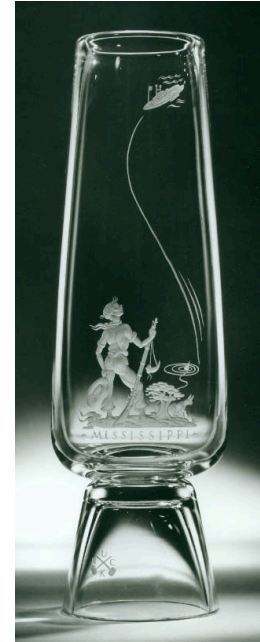


Title: Hooded Warblers and Cherokee Rose

Date: Issued 1961

Primary Maker: Dorothy Doughty

Medium: porcelain, hand-painted



Title: Huckleberry Finn

Date: c. 1955

Primary Maker: Bruce Moore

Medium: engraved blown crystal



Title: Hummingbird on Cactus (Blue-throated Hummingbird on Ladyfinger Cactus)

Date: 1958

Primary Maker: Edward Marshall Boehm

Medium: porcelain; bisque fired; hand-painted



Title: Idaho

Date: 1950-1959

Primary Maker: Steuben Glass

Medium: engraved crystal



Title: Illinois

Date: 1950-1959

Primary Maker: Steuben Glass

Medium: engraved crystal



Title: Indiana

Date: 1950-1959

Primary Maker: Steuben Glass

Medium: engraved crystal



Title: Indigo Bunting on Wild Rose

Date: 1957

Primary Maker: Edward Marshall Boehm

Medium: porcelain; bisque fired; hand-painted



Title: Indigo Buntings and Blackberry

Date: Issued 1941

Primary Maker: Dorothy Doughty

Medium: porcelain, hand-painted



Title: Iowa

Date: 1950-1959

Primary Maker: Steuben Glass

Medium: engraved crystal



Title: Kansas

Date: 1950-1959

Primary Maker: Steuben Glass

Medium: engraved crystal



Title: Kentucky

Date: 1949

Primary Maker: Steuben Glass

Medium: engraved crystal



Title: Lazuli Buntings and Choke Cherry

Date: Issued 1962

Primary Maker: Dorothy Doughty

Medium: porcelain, hand-painted



Title: Louisiana

Date: 1950-1959

Primary Maker: Steuben Glass

Medium: engraved crystal



Title: Louisiana

Date: 1950-1959

Primary Maker: Steuben Glass

Medium: crystal



Title: Magnolia Warblers and Magnolia

Date: Issued 1950

Primary Maker: Dorothy Doughty

Medium: porcelain, hand-painted



Title: Maine

Date: 1950-1959

Primary Maker: Steuben Glass

Medium: engraved crystal



Title: Maryland

Date: 1950-1959

Primary Maker: Steuben Glass

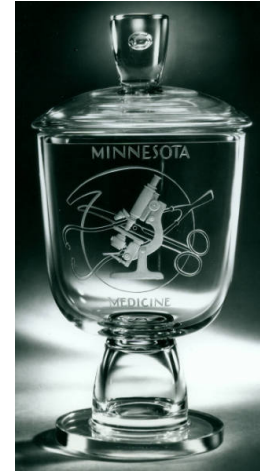
Medium: engraved crystal



Title: Massachusetts
Date: 1950-1959
Primary Maker: Steuben Glass
Medium: engraved crystal



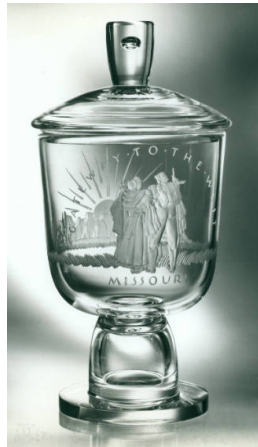
Title: Michigan
Date: 1950-1959
Primary Maker: Steuben Glass
Medium: engraved crystal



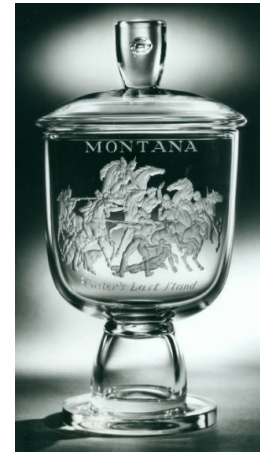
Title: Minnesota
Date: 1950-1959
Primary Maker: Steuben Glass
Medium: engraved crystal



Title: Mississippi
Date: 1950-1959
Primary Maker: Steuben Glass
Medium: engraved crystal



Title: Missouri
Date: 1950-1959
Primary Maker: Steuben Glass
Medium: engraved crystal



Title: Montana
Date: 1950-1959
Primary Maker: Steuben Glass
Medium: engraved crystal



Title: Mountain Bluebirds on Flowering Magnolia
Date: 1963
Primary Maker: Edward Marshall Boehm
Medium: porcelain, bisque fired, hand-painted



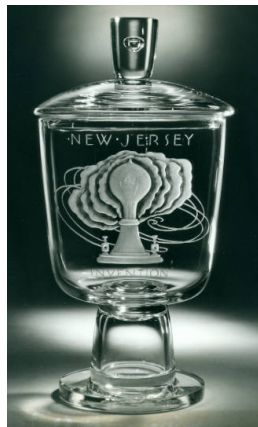
Title: Nebraska
Date: 1950-1959
Primary Maker: Steuben Glass
Medium: engraved crystal



Title: Nevada
Date: 1950-1959
Primary Maker: Steuben Glass
Medium: engraved crystal



Title: New Hampshire
Date: 1950-1959
Primary Maker: Steuben Glass
Medium: engraved crystal



Title: New Jersey
Date: 1950-1959
Primary Maker: Steuben Glass
Medium: engraved crystal



Title: New Mexico
Date: 1950-1959
Primary Maker: Steuben Glass
Medium: engraved crystal



Title: New York
Date: 1950-1959
Primary Maker: Steuben Glass
Medium: engraved crystal



Title: Nonpareil
Buntings on Flowering Raspberry
Date: 1958
Primary Maker: Edward Marshall Boehm
Medium: porcelain; bisque fired; hand-painted



Title: North Carolina
Date: 1950-1959
Primary Maker: Steuben Glass
Medium: engraved crystal



Title: North Dakota
Date: 1950-1959
Primary Maker: Steuben Glass
Medium: engraved crystal



Title: Ohio
Date: 1950-1959
Primary Maker: Steuben Glass
Medium: engraved crystal



Title: Oklahoma
Date: 1950-1959
Primary Maker: Steuben Glass
Medium: engraved crystal



Title: Orange Blossom Sprays
Date: Issued 1947
Primary Maker: Dorothy Doughty
Medium: porcelain, hand-painted



Title: Orange Blossom Sprays
Date: c. 1942
Primary Maker: Dorothy Doughty
Medium: porcelain, hand-painted



Title: Oregon
Date: 1950-1959
Primary Maker: Steuben Glass
Medium: engraved crystal



Title: Parula Warblers and Sweet Bay
Date: Issued 1957
Primary Maker: Dorothy Doughty
Medium: porcelain, hand-painted



Title: Parula Warblers and Sweet Bay
Date: Issued 1957
Primary Maker: Dorothy Doughty
Medium: porcelain, hand-painted



Title: Parula Warblers with Morning Glories
Date: 1965
Primary Maker: Edward Marshall Boehm
Medium: porcelain, bisque fired, hand-painted



Title: Pennsylvania
Date: 1950-1959
Primary Maker: Steuben Glass
Medium: engraved crystal



Title: Phoebes and Flame Vine
Date: Issued 1958
Primary Maker: Dorothy Doughty
Medium: porcelain, hand-painted



Title: Phoebes and Flame Vine
Date: Issued 1958
Primary Maker: Dorothy Doughty
Medium: porcelain, hand-painted



Title: Phoebes and Flame Vine
Date: Issued 1958
Primary Maker: Dorothy Doughty
Medium: porcelain, hand-painted



Title: Phoebes and Flame Vine
Date: Issued 1958
Primary Maker: Dorothy Doughty
Medium: porcelain, hand-painted



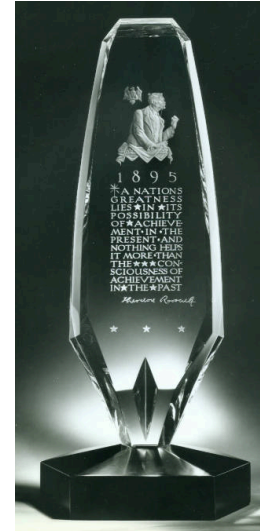
Title: Poppy
Date: 1947
Primary Maker: Steuben Glass
Medium: engraved crystal



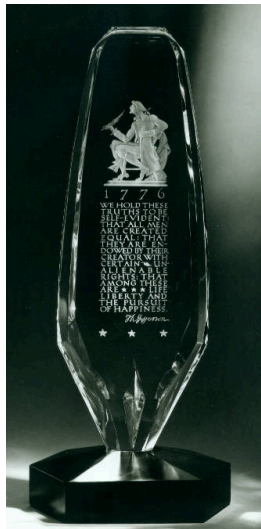
Title: Presidential Plaque, Abraham Lincoln
Date: 1959
Primary Maker: Bruce Moore
Medium: engraved crystal with ebonized wood base



Title: Presidential Plaque, George Washington
Date: 1959
Primary Maker: Bruce Moore
Medium: engraved crystal with ebonized wood base



Title: Presidential Plaque, Theodore Roosevelt
Date: 1962
Primary Maker: Bruce Moore
Medium: engraved crystal with ebonized wood base



Title: Presidential Plaque, Thomas Jefferson
Date: 1959
Primary Maker: Bruce Moore
Medium: engraved crystal with ebony-finish wood base



Title: Prothonotary Warbler, Female with Eggs and Fledgling
Date: 1958
Primary Maker: Edward Marshall Boehm
Medium: porcelain; bisque fired; hand-painted



Title: Ptarmigan
Date: 1962
Primary Maker: Edward Marshall Boehm
Medium: porcelain; bisque fired; hand-painted



Title: Ptarmigan
Date: 1962
Primary Maker: Edward Marshall Boehm
Medium: porcelain; bisque fired; hand-painted



Title: Ptarmigan's Rock
Date: 1962
Primary Maker: Edward Marshall Boehm
Medium: porcelain; bisque fired; hand-painted



Title: Puerto Rico
Date: 1950-1959
Primary Maker: Steuben Glass
Medium: engraved crystal



Title: Puritan Vase

Date: 1959

Primary Maker: Steuben Glass

Medium: engraved crystal



Title: Puritan Vase Lid

Date: 1959

Primary Maker: Steuben Glass

Medium: engraved crystal



Title: Rhode Island

Date: 1950-1959

Primary Maker: Steuben Glass

Medium: engraved crystal



Title: Ring-Necked Pheasants

Date: 1953

Primary Maker: Edward Marshall Boehm

Medium: porcelain; hand-painted; bisque fired with some glaze



Title: Ring-Necked Pheasants

Date: 1953

Primary Maker: Edward Marshall Boehm

Medium: porcelain; hand-painted ; bisque fired with some glaze



Title: Robin with Daffodils

Date: 1964

Primary Maker: Edward Marshall Boehm

Medium: porcelain; bisque fired; hand-painted



Title: Ruby-Throated Humming Birds and Fuchsia

Date: Issued 1950
Primary Maker: Dorothy Doughty
Medium: porcelain, hand-painted



Title: Ruby-Throated Humming Birds and Fuchsia

Date: Issued 1950
Primary Maker: Dorothy Doughty
Medium: porcelain, hand-painted



Title: South Carolina

Date: 1950-1959
Primary Maker: Steuben Glass
Medium: engraved crystal



Title: South Dakota

Date: 1950-1959
Primary Maker: Steuben Glass
Medium: engraved crystal



Title: Spirit of Bethlehem: Aged Shepherd

Date: 1981
Primary Maker: Boehm Porcelain
Medium: porcelain



Title: Spirit of Bethlehem: Angel Standing

Date: 1980
Primary Maker: Boehm Porcelain
Medium: porcelain



Title: Spirit of Bethlehem: Christ Child

Date: 1979
Primary Maker: Boehm Porcelain
Medium: porcelain



Title: Spirit of Bethlehem: Donkey

Date: 1983
Primary Maker: Boehm Porcelain
Medium: porcelain



Title: Spirit of Bethlehem: Joseph

Date: 1979
Primary Maker: Boehm Porcelain
Medium: porcelain



Title: Spirit of Bethlehem: King Balthazar
Date: 1982
Primary Maker: Boehm
Porcelain
Medium: porcelain



Title: Spirit of Bethlehem: King Gaspar
Date: 1982
Primary Maker: Boehm
Porcelain
Medium: porcelain



Title: Spirit of Bethlehem: King Melchior
Date: 1982
Primary Maker: Boehm
Porcelain
Medium: porcelain



Title: Spirit of Bethlehem: Mary
Date: 1979
Primary Maker: Boehm
Porcelain
Medium: porcelain



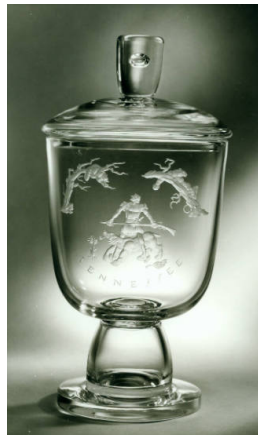
Title: Spirit of Bethlehem: Ox
Date: 1983
Primary Maker: Boehm
Porcelain
Medium: porcelain



Title: Spirit of Bethlehem: Townspeople: Woman with Fruit
Date: 1983
Primary Maker: Boehm
Porcelain
Medium: porcelain



Title: Spirit of Bethlehem: Young Shepherd
Date: 1981
Primary Maker: Boehm
Porcelain
Medium: porcelain



Title: Tennessee
Date: 1950-1959
Primary Maker: Steuben Glass
Medium: engraved crystal



Title: Texas
Date: 1950-1959
Primary Maker: Steuben Glass
Medium: engraved crystal

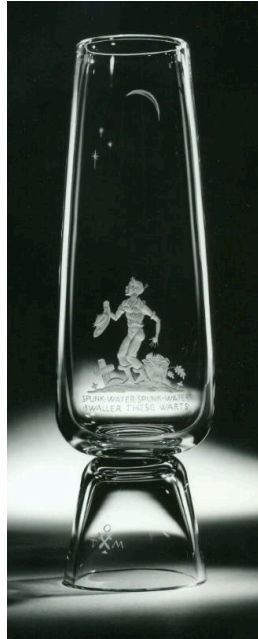


Title: Toast Cup

Date: c. 1902

Primary Maker: Artus Van Briggie

Medium: earthenware with matte glaze



Title: Tom Sawyer

Date: c. 1955

Primary Maker: Bruce Moore

Medium: engraved blown crystal



Title: Totem of the Americas

Date: 1959

Primary Maker: Bruce Moore

Medium: engraved crystal with ebony-finish wood base



Title: Trail Driver

Date: 1959

Primary Maker: Tom Lea

Medium: engraved crystal



Title: Trail Driver

Date: 1959

Primary Maker: Tom Lea

Medium: fired crystal



Title: Utah

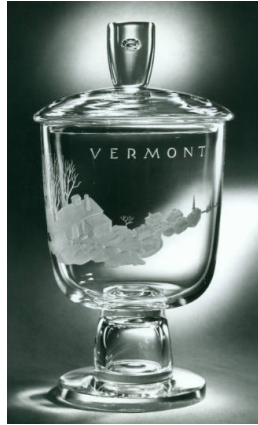
Date: 1950-1959

Primary Maker: Steuben Glass

Medium: engraved crystal



Title: Varied Buntings with Crown Imperial
Date: 1965
Primary Maker: Edward Marshall Boehm
Medium: porcelain, bisque fired, hand-painted



Title: Vermont
Date: 1950-1959
Primary Maker: Steuben Glass
Medium: engraved crystal



Title: Virginia
Date: 1950-1959
Primary Maker: Steuben Glass
Medium: engraved crystal



Title: Virginian Cardinals and Orange Blossom
Date: Issued 1937
Primary Maker: Dorothy Doughty
Medium: porcelain, hand-painted



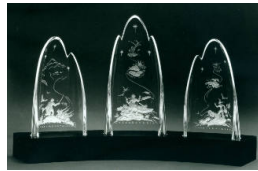
Title: Virginian Cardinals and Orange Blossom
Date: Issued 1937
Primary Maker: Dorothy Doughty
Medium: porcelain, hand-painted



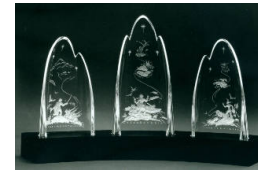
Title: Washington
Date: 1950-1959
Primary Maker: Steuben Glass
Medium: engraved crystal



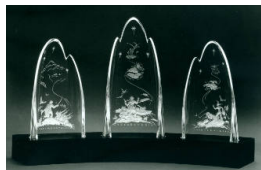
Title: West Virginia
Date: 1950-1959
Primary Maker: Steuben Glass
Medium: engraved crystal



Title: The Wilderness Trilogy, The Mountains
Date: 1957
Primary Maker: Bruce Moore
Medium: engraved crystal



Title: The Wilderness Trilogy, The Prairies
Date: 1957
Primary Maker: Bruce Moore
Medium: engraved crystal



Title: The Wilderness Trilogy, The Rivers
Date: 1957
Primary Maker: Bruce Moore
Medium: engraved crystal



Title: Wisconsin
Date: 1950-1959
Primary Maker: Steuben Glass
Medium: engraved crystal



Title: Wyoming
Date: 1950-1959
Primary Maker: Steuben Glass
Medium: engraved crystal



Title: Yellow-Bellied Sapsuckers on Wild Apple Blossom
Date: 1972
Primary Maker: Boehm Porcelain
Medium: porcelain; bisque fired; hand-painted



Title: Yellow-Throated Warbler on Crimson-Eye Mallow
Date: 1957
Primary Maker: Edward Marshall Boehm
Medium: porcelain; bisque fired; hand-painted



Title: Yellow-Throats and Water Hyacinth
Date: Issued 1958
Primary Maker: Dorothy Doughty
Medium: porcelain, hand-painted



Title: Yellow-Throats and Water Hyacinth

Date: Issued 1958

Primary Maker: Dorothy Doughty

Medium: porcelain, hand-painted



Title: Young American Bald Eagle

Date: 1969

Primary Maker: Edward Marshall Boehm

Medium: porcelain, bisque fired, hand-painted