

Basic Report



Title: Amber Inverted Thumbprint Water Pitcher

Primary Maker: Unknown
American
Medium: pressed glass



Title: Amber Valencian Waffle Tall Compote

Primary Maker: Unknown
American
Medium: pressed glass



Title: Basket

Primary Maker: Weinranck and Schmidt
Medium: cast silver



Title: Berry Bowl

Primary Maker: Unknown
American
Medium: pressed glass



Title: Berry Bowl

Primary Maker: Unknown
American
Medium: pressed glass



Title: Black Bear Pomade

Medium: glass



Title: Bottle
Primary Maker: Unknown
American
Medium: blown flint glass



Title: Bottle
Primary Maker: Weinranck
and Schmidt
Medium: glass



Title: Bottle
Primary Maker: Weinranck
and Schmidt
Medium: glass



Title: Bottle
Primary Maker: Weinranck
and Schmidt
Medium: glass



Title: Bottle
Primary Maker: Weinranck
and Schmidt
Medium: glass



Title: Bottle
Medium: glass



Title: Bottle
Medium: glass



Title: Bottle
Medium: glass



Title: Bouillon Cup
Date: 1873 - 1891
Primary Maker: Mintons
Medium: porcelain with gold



Title: Bouillon Cup
Date: 1881 - 1920
Primary Maker: Coalport
Medium: porcelain



**Title: Bouillon Cup
Saucer**
Date: 1891 - 1912
Primary Maker: Mintons
Medium: porcelain with gold



Title: Bowl
Date: c. 1850
Primary Maker: Staffordshire
Medium: earthenware; pink transfer print



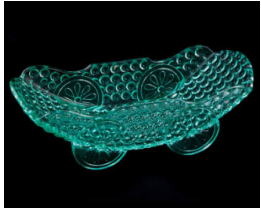
Title: Bowl
Primary Maker: Staffordshire
Medium: earthenware with blue transfer print



Title: Bowl
Primary Maker: Pairpoint Manufacturing Company
Medium: cut glass



Title: Bowl
Primary Maker: Unknown American
Medium: pressed glass



Title: Bowl
Primary Maker: Unknown
American
Medium: glass



Title: Bowl
Primary Maker: Unknown
American
Medium: flint glass



Title: Bowl
Primary Maker: Unknown
American
Medium: flint glass



Title: Bowl
Primary Maker: Boston &
Sandwich Glass Company
Medium: glass



Title: Bowl Lid
Date: 1881 - 1920
Primary Maker: Coalport
Medium: porcelain



Title: Bowl Lid
Primary Maker: Vallerysthal
Medium: milk glass



Title: Bowl Lid
Primary Maker: Vallerysthal
Medium: milk glass



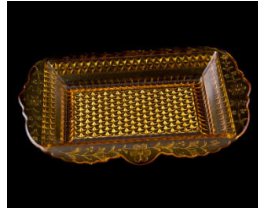
Title: Bread-and-Butter Plate
Date: 1881 - 1920
Primary Maker: Coalport
Medium: porcelain



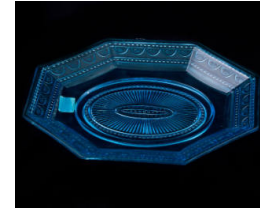
Title: Bread-and-Butter Plate
Date: 1891 - 1912
Primary Maker: Minton's
Medium: porcelain with gold



Title: Bread Tray
Primary Maker: Unknown
American
Medium: pressed glass



Title: Bread Tray
Primary Maker: Unknown
American
Medium: pressed glass



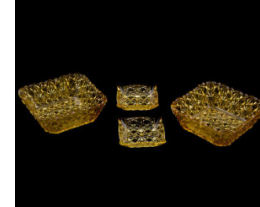
Title: Bread Tray
Primary Maker: Unknown
American
Medium: pressed glass



Title: Butter Chip
Date: 1891 - 1912
Primary Maker: Mintons
Medium: porcelain with gold



Title: Butter Chip
Date: 1891 - 1912
Primary Maker: Mintons
Medium: porcelain with gold



Title: Butter Chip
Primary Maker: Unknown
American
Medium: pressed glass



Title: Butter Dish
Primary Maker: Unknown
American
Medium: pressed glass



Title: Butter Dish
Primary Maker: Unknown
American
Medium: glass



Title: Butter Dish
Primary Maker: Unknown
American
Medium: pressed glass



Title: Butter Dish
Primary Maker: Unknown
American
Medium: pressed glass



Title: Butter Dish
Primary Maker: Unknown
American
Medium: pressed glass



Title: Butter Dish
Primary Maker: Unknown
American
Medium: pressed glass



Title: Butter Dish
Primary Maker: Unknown
American
Medium: pressed glass



Title: Butter Dish
Medium: glass



Title: Butter Dish Cover
Medium: glass



Title: Butter Dish Lid
Primary Maker: Unknown
American
Medium: glass



Title: Butter Dish Lid
Primary Maker: Unknown
American
Medium: pressed glass



Title: Cake Plate
Date: c.1900
Primary Maker: Pairpoint
Manufacturing Company
Medium: cut glass



Title: Cake Plate
Date: c. 1900
Primary Maker: Pairpoint Manufacturing Company
Medium: cut glass



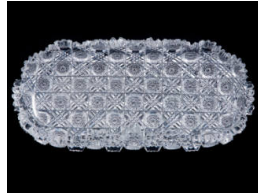
Title: Cake Plate
Date: c. 1920
Primary Maker: Frederick Carder
Medium: engraved glass



Title: Cake Plate
Date: c. 1920
Primary Maker: Lazeyras, Rosenfeld, and Lehman
Medium: porcelain



Title: Caster Stand
Primary Maker: Weinranck and Schmidt
Medium: silver



Title: Celery Platter
Date: c. 1903
Primary Maker: T.G. Hawkes & Company
Medium: cut glass



Title: Celery Vase
Primary Maker: Unknown American
Medium: glass



Title: Champagne Glass
Date: c. 1915
Primary Maker: T.G. Hawkes & Company
Medium: cut glass



Title: Child's Plate
Primary Maker: Unknown English
Medium: earthenware; black transfer print



Title: Chocolate Cup
Date: 1891 - 1912
Primary Maker: Mintons
Medium: porcelain



Title: Chocolate Cup
Date: 1881 - 1920
Primary Maker: Coalport
Medium: porcelain



Title: Chocolate Cup
Date: after 1912
Primary Maker: Mintons
Medium: porcelain with gold



Title: Chocolate Cup
Primary Maker: Manufacture
Nationale de Sèvres
Medium: porcelain



**Title: Chocolate Cup
Saucer**
Date: 1891 - 1912
Primary Maker: Mintons
Medium: porcelain with gold



**Title: Chocolate Cup
Saucer**
Date: 1891 - 1912
Primary Maker: Mintons
Medium: porcelain with gold



Title: Chocolate Pot
Date: 1881 - 1920
Primary Maker: Coalport
Medium: porcelain



Title: Chocolate Pot
Date: 1891 - 1912
Primary Maker: Mintons
Medium: porcelain with gold



Title: Chocolate Pot Lid
Date: 1881 - 1920
Primary Maker: Coalport
Medium: porcelain



Title: Chocolate Pot Lid
Date: 1891 - 1912
Primary Maker: Mintons
Medium: porcelain with gold
and metal



Title: Coffee Cup
Date: 1891 - 1912
Primary Maker: Mintons
Medium: porcelain with gold



Title: Coffee Cup
Primary Maker: Manufacture Nationale de Sèvres
Medium: porcelain



Title: Coffee Cup
Date: 1881 - 1920
Primary Maker: Coalport
Medium: porcelain



Title: Coffee Cup
Primary Maker: Rue Thiroux
Medium: porcelain



Title: Coffee Cup
Primary Maker: Manufacture Nationale de Sèvres
Medium: porcelain



Title: Coffee Cup Saucer
Date: 1891 - 1912
Primary Maker: Mintons
Medium: porcelain with gold



Title: Coffee Cup Saucer
Primary Maker: Rue Thiroux
Medium: porcelain



Title: Coffeepot
Date: c. 1910
Primary Maker: Gorham Manufacturing Company
Medium: sterling silver with ivory



Title: Coffeepot
Date: 1881 - 1920
Primary Maker: Coalport
Medium: porcelain



Title: Coffeepot
Primary Maker: Rue Thiroux
Medium: porcelain



Title: Coffeepot
Primary Maker: Manufacture
Nationale de Sèvres
Medium: porcelain



Title: Coffeepot Lid
Primary Maker: Rue Thiroux
Medium: porcelain



Title: Coffeepot Lid
Primary Maker: Manufacture
Nationale de Sèvres
Medium: porcelain



Title: Coffeepot Lid
Date: 1881 - 1920
Primary Maker: Coalport
Medium: porcelain



Title: Compote
Medium: cut glass



Title: Compote
Medium: cut glass



Title: Compote
Medium: cut glass



Title: Compote
Primary Maker: H.P. Sinclair & Company
Medium: cut glass



Title: Compote
Primary Maker: H.P. Sinclair & Company
Medium: cut glass



Title: Compote
Date: c. 1900
Primary Maker: Pairpoint Manufacturing Company
Medium: cut glass



Title: Compote
Date: c. 1900
Primary Maker: T.G. Hawkes & Company
Medium: cut glass



Title: Compote
Date: c. 1900
Primary Maker: T.G. Hawkes & Company
Medium: cut glass



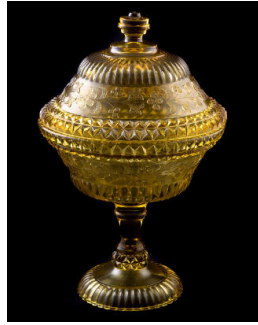
Title: Compote
Primary Maker: Unknown American
Medium: flint glass



Title: Compote
Primary Maker: Unknown American
Medium: pressed glass



Title: Compote
Primary Maker: Unknown
American
Medium: pressed glass



Title: Compote
Primary Maker: Unknown
American
Medium: pressed glass



Title: Compote
Primary Maker: Unknown
American
Medium: pressed glass



Title: Compote
Primary Maker: Unknown
American
Medium: pressed glass



Title: Compote
Date: c. 1920
Primary Maker: Frederick
Carder
Medium: engraved glass



Title: Compote
Date: 1753
Primary Maker: Manufacture
Nationale de Sèvres
Medium: porcelain with bronze



Title: Compote
Date: after 1903
Primary Maker: T.G. Hawkes
& Company
Medium: cut glass



Title: Compote
Date: after 1903
Primary Maker: T.G. Hawkes
& Company
Medium: cut glass



Title: Compote
Date: c. 1891
Primary Maker: Schierholz
Porcelain
Medium: porcelain



Title: Compote

Date: c. 1900

Medium: porcelain



Title: Compote Lid

Medium: cut glass



Title: Compote Lid

Medium: cut glass



Title: Compote Lid

Date: c. 1879

Primary Maker: Gillinder & Sons

Medium: pressed glass



Title: Console Bowl

Medium: cut glass



Title: Covered Bowl

Date: 1881 - 1920

Primary Maker: Coalport

Medium: porcelain



Title: Covered Bowl

Primary Maker: Vallerysthal

Medium: milk glass



Title: Covered Bowl

Primary Maker: Vallerysthal

Medium: milk glass



Title: Covered Compote

Date: c. 1879

Primary Maker: Gillinder & Sons

Medium: pressed glass



Title: Covered Dish
Date: c. 1898
Primary Maker: Unknown
American
Medium: glass



Title: Covered Dish
Medium: milk glass



Title: Covered Dish
Medium: milk glass



Title: Covered Dish
Medium: milk glass



Title: Covered Serving Bowl
Date: 1881 - 1920
Primary Maker: Coalport
Medium: porcelain



Title: Covered Serving Bowl
Date: 1881 - 1920
Primary Maker: Coalport
Medium: porcelain



Title: Creamer
Date: c. 1910
Primary Maker: Gorham
Manufacturing Company
Medium: sterling silver with
gold wash



Title: Creamer
Date: 1891 - 1912
Primary Maker: Minton's
Medium: porcelain with gold



Title: Creamer
Date: after 1912
Primary Maker: Minton's
Medium: porcelain with gold



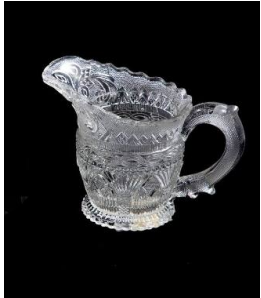
Title: Creamer
Primary Maker: Unknown
American
Medium: pressed glass



Title: Creamer
Primary Maker: Unknown
American
Medium: pressed glass



Title: Creamer
Primary Maker: Unknown
American
Medium: pressed glass



Title: Creamer
Primary Maker: Unknown
American
Medium: flint glass



Title: Creamer
Primary Maker: Unknown
American
Medium: pressed glass



Title: Creamer
Primary Maker: Unknown
American
Medium: pressed glass



Title: Creamer
Primary Maker: Unknown
American
Medium: pressed glass



Title: Creamer
Date: 1881 - 1920
Primary Maker: Coalport
Medium: porcelain



Title: Creamer
Primary Maker: Rue Thiroux
Medium: porcelain



Title: Creamer
Primary Maker: Rue Thiroux
Medium: porcelain



Title: Creamer
Primary Maker: Manufacture
Nationale de Sèvres
Medium: porcelain



Title: Creamer
Primary Maker: Manufacture
Nationale de Sèvres
Medium: porcelain



Title: Creamer Lid
Primary Maker: Rue Thiroux
Medium: porcelain



Title: Creamer Lid
Primary Maker: Rue Thiroux
Medium: porcelain



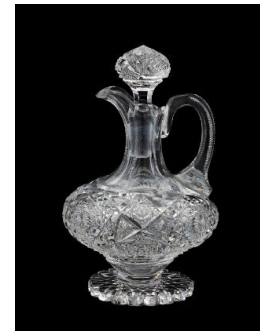
Title: Cream Pitcher
Date: 1891 - 1912
Primary Maker: Mintons
Medium: porcelain with gold



Title: Cream Pitcher
Date: after 1912
Primary Maker: Mintons
Medium: porcelain with gold



Title: Cream Pitcher
Date: 1891 - 1912
Primary Maker: Mintons
Medium: porcelain with gold



Title: Cruet
Date: c. 1905
Primary Maker: T.G. Hawkes
& Company
Medium: cut glass



Title: Cruet
Medium: milk glass



Title: Cruet Stopper
Date: c. 1905
Primary Maker: T.G. Hawkes
& Company
Medium: cut glass



Title: Cup
Date: 1843 - 1855
Primary Maker: Staffordshire
Medium: ironstone with flow
blue transfer print



Title: Cup
Date: 1881 - 1920
Primary Maker: Coalport
Medium: porcelain



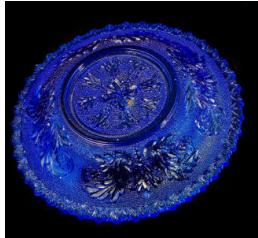
Title: Cup
Primary Maker: Staffordshire
Medium: earthenware with red
transfer print



Title: Cup Plate
Date: 1881 - 1920
Primary Maker: Coalport
Medium: porcelain



Title: Cup Plate
Primary Maker: Unknown
American
Medium: glass



Title: Cup Plate
Primary Maker: Unknown
American
Medium: flint glass



Title: Cup Plate
Primary Maker: Unknown
American
Medium: flint glass



Title: Cup Plate
Primary Maker: Unknown
American
Medium: flint glass



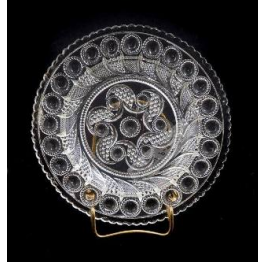
Title: Cup Plate
Primary Maker: Unknown
American
Medium: flint glass



Title: Cup Plate
Primary Maker: Unknown
American
Medium: flint glass



Title: Cup Plate
Primary Maker: Unknown
American
Medium: flint glass



Title: Cup Plate
Primary Maker: Unknown
American
Medium: glass



Title: Cup Plate
Primary Maker: Unknown
American
Medium: flint glass



Title: Cup Plate
Primary Maker: Unknown
American
Medium: flint glass



Title: Decanter
Primary Maker: Weinranck
and Schmidt
Medium: glass and sterling
silver



Title: Decanter
Primary Maker: Weinranck
and Schmidt
Medium: glass and sterling
silver



Title: Decanter
Date: 1840-1850
Medium: glass



Title: Decanter Stopper
Primary Maker: Weinranck and Schmidt
Medium: glass and sterling silver



Title: Decorative Plate
Date: 1867
Primary Maker: Manufacture Nationale de Sèvres
Medium: porcelain



Title: Decorative Plate
Date: 1867
Primary Maker: Manufacture Nationale de Sèvres
Medium: porcelain



Title: Demitasse Cup
Date: 1891 - 1912
Primary Maker: Mintons
Medium: porcelain with gold



Title: Demitasse Cup
Date: 1881 - 1920
Primary Maker: Coalport
Medium: porcelain

Title: Demitasse Cup
Primary Maker: Manufacture Nationale de Sèvres
Medium: porcelain



Title: Demitasse Cup Saucer
Date: 1891 - 1912
Primary Maker: Mintons
Medium: porcelain with gold



Title: Demitasse Saucer
Primary Maker: Manufacture Nationale de Sèvres
Medium: porcelain



Title: Demitasse Saucer
Primary Maker: Manufacture Nationale de Sèvres
Medium: porcelain



Title: Demitasse Saucer
Primary Maker: Manufacture Nationale de Sèvres
Medium: porcelain



Title: Dessert Bowl
Date: 1881 - 1920
Primary Maker: Coalport
Medium: porcelain



Title: Dessert Bowl
Date: c. 1920
Primary Maker: Frederick Carder
Medium: engraved glass



Title: Dessert Cup
Date: 1881 - 1920
Primary Maker: Coalport
Medium: porcelain



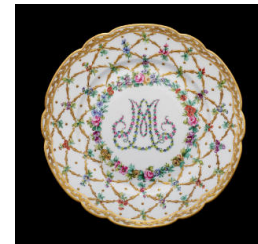
Title: Dinner Plate
Date: 1881 - 1920
Primary Maker: Coalport
Medium: porcelain



Title: Dinner Plate
Date: after 1912
Primary Maker: Mintons
Medium: porcelain with gold



Title: Dinner Plate
Primary Maker: Rue Thiroux
Medium: porcelain



Title: Dinner Plate
Primary Maker: Manufacture Nationale de Sèvres
Medium: porcelain



Title: Dish
Medium: milk glass



Title: Dish
Medium: milk glass



Title: Dish
Medium: milk glass



Title: Dish
Medium: milk glass



Title: Dish Cover
Date: c. 1898
Primary Maker: Unknown
American
Medium: glass



Title: Dish Lid
Medium: milk glass



Title: Dish Lid
Medium: milk glass



Title: Dish Lid
Medium: milk glass



Title: Dish Lid
Medium: milk glass



Title: Dish Lid
Medium: milk glass



Title: Dish Lid
Medium: milk glass



Title: Drinking Glass
Date: 1905
Primary Maker: T.G. Hawkes
& Company
Medium: engraved glass



Title: Drinking Glass
Date: 1905
Primary Maker: T.G. Hawkes
& Company
Medium: engraved glass



Title: Drinking Glass
Date: 1905
Primary Maker: T.G. Hawkes
& Company
Medium: engraved glass



Title: Drinking Glass
Date: 1905
Primary Maker: T.G. Hawkes
& Company
Medium: engraved glass



Title: Drinking Glass
Date: 1905
Primary Maker: T.G. Hawkes
& Company
Medium: engraved glass



Title: Drinking Glass
Date: 1905
Primary Maker: T.G. Hawkes
& Company
Medium: engraved glass



Title: Drinking Glass
Date: 1905
Primary Maker: T.G. Hawkes
& Company
Medium: engraved glass



Title: Eggcup
Date: 1881 - 1920
Primary Maker: Coalport
Medium: porcelain



Title: Eggcup
Primary Maker: Unknown
American
Medium: flint glass



Title: Epergne Base
Date: c. 1900
Medium: cut glass



Title: Epergne Bowl
Date: c. 1900
Medium: cut glass with sterling silver



Title: Epergne Stand
Date: after 1903
Primary Maker: T.G. Hawkes & Company
Medium: cut glass



Title: Epergne Stand
Date: after 1903
Primary Maker: T.G. Hawkes & Company
Medium: cut glass



Title: Epergne Vase
Date: c. 1900
Medium: cut glass



Title: Finger Bowl
Date: c. 1915
Primary Maker: T.G. Hawkes & Company
Medium: cut glass



Title: Finger Bowl
Date: c. 1915
Primary Maker: T.G. Hawkes & Company
Medium: cut glass



Title: Finger Bowl
Date: c. 1915
Primary Maker: T.G. Hawkes
& Company
Medium: cut glass



Title: Finger Bowl
Date: c. 1915
Primary Maker: T.G. Hawkes
& Company
Medium: cut glass



Title: Finger Bowl
Date: c. 1915
Primary Maker: T.G. Hawkes
& Company
Medium: cut glass



Title: Finger Bowl
Date: c. 1915
Primary Maker: T.G. Hawkes
& Company
Medium: cut glass



Title: Finger Bowl
Date: c. 1915
Primary Maker: T.G. Hawkes
& Company
Medium: cut glass



Title: Finger Bowl
Date: c. 1915
Primary Maker: T.G. Hawkes
& Company
Medium: cut glass



Title: Finger Bowl
Primary Maker: Unknown
American
Medium: pressed glass



Title: Finger Bowl
Primary Maker: Unknown
American
Medium: pressed glass



Title: Finger Bowl
Primary Maker: Unknown
American
Medium: pressed glass



Title: Flask
Primary Maker: Unknown
American
Medium: flint glass



Title: Flask
Primary Maker: Unknown
American
Medium: flint glass



Title: Flask
Primary Maker: Unknown
American
Medium: flint glass



Title: Flip Glass
Medium: glass



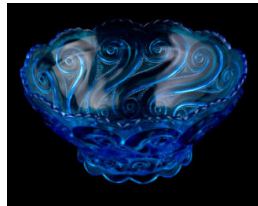
Title: Fruit Bowl
Date: 1891 - 1912
Primary Maker: Mintons
Medium: porcelain with gold



Title: Fruit Bowl
Date: c. 1841
Primary Maker: Staffordshire
Medium: earthenware; brown transfer print



Title: Fruit Bowl
Date: c. 1900
Primary Maker: Pairpoint Manufacturing Company
Medium: cut glass



Title: Fruit Bowl
Primary Maker: Unknown
American
Medium: pressed glass



Title: Fruit Bowl
Primary Maker: Unknown
American
Medium: pressed glass



Title: Fruit Bowl
Primary Maker: Unknown
American
Medium: pressed glass



Title: Fruit Bowl
Primary Maker: Unknown
American
Medium: pressed glass



Title: Fruit Bowl
Date: c. 1920
Primary Maker: Frederick
Carder
Medium: engraved glass



Title: Fruit Bowl
Date: c. 1840
Primary Maker: Podmore,
Walker & Company
Medium: pearlstone; purple
transfer print



Title: Fruit Cup
Date: 1881 - 1920
Primary Maker: Coalport
Medium: porcelain



**Title: George
Washington Plate**
Primary Maker: Unknown
American
Medium: flint glass



Title: Glass
Date: c. 1920
Primary Maker: Frederick
Carder
Medium: engraved glass



Title: Goblet
Date: c. 1915
Primary Maker: T.G. Hawkes
& Company
Medium: cut glass



Title: Goblet
Date: c. 1915
Primary Maker: T.G. Hawkes
& Company
Medium: cut glass



Title: Goblet
Primary Maker: Unknown
American
Medium: pressed glass



Title: Goblet
Primary Maker: Unknown
American
Medium: pressed glass



Title: Goblet
Primary Maker: Unknown
American
Medium: flint glass



Title: Goblet
Primary Maker: Unknown
American
Medium: glass



Title: Goblet
Primary Maker: Unknown
American
Medium: glass



Title: Goblet
Medium: earthenware with
lustre



Title: Goblet
Date: c. 1920
Primary Maker: Frederick
Carder
Medium: engraved glass



Title: Handled Soup Cup
Date: 1881 - 1920
Primary Maker: Coalport
Medium: porcelain



Title: Handled Tea Mug
Date: c. 1900
Primary Maker: H.P. Sinclair
& Company
Medium: cut glass



Title: Handled Tea Mug
Date: c. 1900
Primary Maker: H.P. Sinclair & Company
Medium: cut glass



Title: Handled Tea Mug
Date: c. 1900
Primary Maker: H.P. Sinclair & Company
Medium: cut glass



Title: Handled Tea Mug
Date: c. 1900
Primary Maker: H.P. Sinclair & Company
Medium: cut glass



Title: Honey Dish
Primary Maker: Unknown American
Medium: glass



Title: Hunt Scene Pitcher
Medium: earthenware



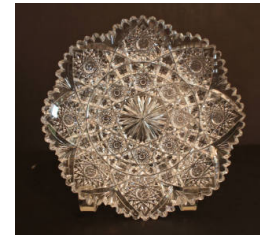
Title: Ice Bucket
Date: after 1903
Primary Maker: T.G. Hawkes & Company
Medium: cut glass



Title: Ice Cream Plate
Date: c.1900
Primary Maker: Pairpoint Manufacturing Company
Medium: cut glass



Title: Ice Cream Plate
Date: c.1900
Primary Maker: Pairpoint Manufacturing Company
Medium: cut glass



Title: Ice Cream Plate
Date: c.1900
Primary Maker: Pairpoint Manufacturing Company
Medium: cut glass



Title: Ice Cream Plate

Date: c.1900

Primary Maker: Pairpoint
Manufacturing Company

Medium: cut glass

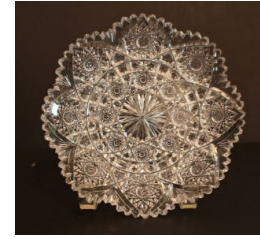


Title: Ice Cream Plate

Date: c.1900

Primary Maker: Pairpoint
Manufacturing Company

Medium: cut glass



Title: Ice Cream Plate

Date: c.1900

Primary Maker: Pairpoint
Manufacturing Company

Medium: cut glass



Title: Ice Cream Plate

Date: c.1900

Primary Maker: Pairpoint
Manufacturing Company

Medium: cut glass



Title: Ice Cream Tray

Date: c. 1900

Primary Maker: Pairpoint
Manufacturing Company

Medium: cut glass



Title: Ice Tea Glass

Date: c. 1920

Primary Maker: Frederick
Carder

Medium: engraved glass



Title: Jam Jar

Date: 1876

Primary Maker: Unknown
American

Medium: glass



Title: Jam Jar Lid

Date: 1876

Primary Maker: Unknown
American

Medium: glass



Title: Jar

Primary Maker: Weinranck
and Schmidt

Medium: glass



Title: Lemonade Set Pitcher
Date: c. 1900
Primary Maker: Pairpoint Manufacturing Company
Medium: cut glass



Title: Lemonade Set Tumbler
Date: c. 1900
Primary Maker: Pairpoint Manufacturing Company
Medium: cut glass



Title: Lemonade Set Tumbler
Date: c. 1900
Primary Maker: Pairpoint Manufacturing Company
Medium: cut glass



Title: Lemonade Set Tumbler
Date: c. 1900
Primary Maker: Pairpoint Manufacturing Company
Medium: cut glass



Title: Lemonade Set Tumbler
Date: c. 1900
Primary Maker: Pairpoint Manufacturing Company
Medium: cut glass



Title: Lemonade Set Tumbler
Date: c. 1900
Primary Maker: Pairpoint Manufacturing Company
Medium: cut glass



Title: Lemonade Set Tumbler
Date: c. 1900
Primary Maker: Pairpoint Manufacturing Company
Medium: cut glass



Title: Lemonade Set Tumbler
Date: c. 1900
Primary Maker: Pairpoint Manufacturing Company
Medium: cut glass



Title: Lemonade Set Tumbler
Date: c. 1900
Primary Maker: Pairpoint Manufacturing Company
Medium: cut glass



Title: Lemonade Set Tumbler
Date: c. 1900
Primary Maker: Pairpoint Manufacturing Company
Medium: cut glass



Title: Lemonade Set Tumbler
Date: c. 1900
Primary Maker: Pairpoint Manufacturing Company
Medium: cut glass



Title: Lemonade Set Tumbler
Date: c. 1900
Primary Maker: Pairpoint Manufacturing Company
Medium: cut glass



Title: Lemonade Set Tumbler
Date: c. 1900
Primary Maker: Pairpoint Manufacturing Company
Medium: cut glass



Title: Lemon Plate
Medium: cut glass



Title: Lemon Plate Handle
Primary Maker: Gorham Manufacturing Company
Medium: sterling silver



Title: Lemon Tray
Date: c. 1910
Primary Maker: Gorham Manufacturing Company
Medium: sterling silver



Title: Lid
Primary Maker: Weinranck and Schmidt
Medium: sterling silver



Title: Master Saltcellar
Medium: cut glass



Title: Meat Platter
Primary Maker: Gorham Manufacturing Company
Medium: sterling silver



Title: Melon Platter
Date: after 1903
Primary Maker: T.G. Hawkes & Company
Medium: cut glass



Title: Milk Pitcher
Date: 1891 - 1912
Primary Maker: Mintons
Medium: porcelain with gold



Title: Milk Pitcher
Date: after 1912
Primary Maker: Mintons
Medium: porcelain with gold



Title: Milk Pitcher
Date: 1881 - 1920
Primary Maker: Coalport
Medium: porcelain



Title: Miniature Bottle
Primary Maker: Unknown American
Medium: flint glass



Title: Miniature Cup
Date: 1881 - 1920
Primary Maker: Coalport
Medium: porcelain



Title: Mug
Primary Maker: Unknown American
Medium: pressed glass



Title: Mustard Pot
Primary Maker: Unknown American
Medium: pressed glass



Title: Mustard Pot
Primary Maker: Unknown
American
Medium: pressed glass



Title: Nut Dish
Date: 1881 - 1920
Primary Maker: Coalport
Medium: porcelain



Title: Orange Bowl
Date: c. 1900
Primary Maker: Pairpoint
Manufacturing Company
Medium: cut glass



Title: Parfait Glass
Date: c. 1915
Primary Maker: T.G. Hawkes
& Company
Medium: cut glass

Title: Parfait Glass
Date: c. 1915
Primary Maker: T.G. Hawkes
& Company
Medium: cut glass



Title: Parfait Glass
Date: c. 1915
Primary Maker: T.G. Hawkes
& Company
Medium: cut glass



Title: Parfait Glass
Date: c. 1915
Primary Maker: T.G. Hawkes
& Company
Medium: cut glass



Title: Parfait Glass
Date: c. 1915
Primary Maker: T.G. Hawkes
& Company
Medium: cut glass



Title: Parfait Glass
Date: c. 1915
Primary Maker: T.G. Hawkes
& Company
Medium: cut glass



Title: Parfait Glass
Date: c. 1915
Primary Maker: T.G. Hawkes
& Company
Medium: cut glass



Title: Parfait Glass
Date: c. 1915
Primary Maker: T.G. Hawkes
& Company
Medium: cut glass



Title: Parfait Glass Underplate
Date: c. 1915
Primary Maker: T.G. Hawkes
& Company
Medium: cut glass



Title: Pepper Shaker
Date: 1910
Primary Maker: Gorham
Manufacturing Company
Medium: sterling silver



Title: Pepper Shaker
Date: 1910
Primary Maker: Gorham
Manufacturing Company
Medium: sterling silver



Title: Pepper Shaker Lid
Date: 1910
Primary Maker: Gorham
Manufacturing Company
Medium: sterling silver



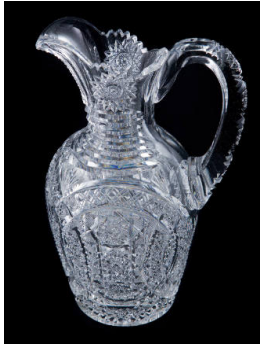
Title: Pepper Shaker Lid
Date: 1910
Primary Maker: Gorham
Manufacturing Company
Medium: sterling silver



Title: Pitcher
Medium: earthenware with
lustre



Title: Pitcher
Primary Maker: Herculaneum
Pottery
Medium: creamware with
transfer print



Title: Pitcher
Date: c. 1900
Primary Maker: T. B. Clark & Company
Medium: cut glass



Title: Pitcher
Date: c. 1900
Primary Maker: Josiah Wedgwood & Sons
Medium: earthenware



Title: Pitcher
Primary Maker: Staffordshire
Medium: earthenware with transfer print



Title: Pitcher
Primary Maker: Staffordshire
Medium: ironstone



Title: Pitcher
Primary Maker: Staffordshire
Medium: earthenware



Title: Pitcher
Date: c. 1900
Primary Maker: Pairpoint Manufacturing Company
Medium: cut glass



Title: Pitcher
Date: c. 1915
Primary Maker: T.G. Hawkes & Company
Medium: cut glass



Title: Pitcher
Date: c. 1915
Primary Maker: T.G. Hawkes & Company
Medium: cut glass



Title: Pitcher
Primary Maker: South Jersey
Medium: glass



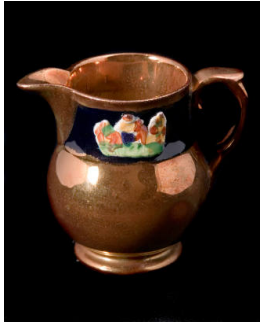
Title: Pitcher
Medium: stoneware



Title: Pitcher
Medium: earthenware



Title: Pitcher
Medium: earthenware with lustre



Title: Pitcher
Medium: earthenware with lustre



Title: Pitcher
Medium: ironstone with lustre



Title: Pitcher
Medium: earthenware; multicolored transfer print



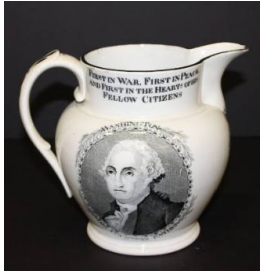
Title: Pitcher
Medium: earthenware; copper glaze; enamel



Title: Pitcher
Date: c. 1800
Primary Maker: Herculaneum Pottery
Medium: creamware with transfer print



Title: Pitcher
Primary Maker: Herculaneum Pottery
Medium: creamware with transfer print



Title: Pitcher
Date: c. 1824
Primary Maker: Herculaneum Pottery
Medium: creamware with transfer print



Title: Pitcher
Primary Maker: Herculaneum Pottery
Medium: creamware with transfer print



Title: Pitcher
Date: 1891 - 1908
Primary Maker: Josiah Wedgwood & Sons
Medium: jasperware



Title: Pitcher
Primary Maker: Josiah Wedgwood & Sons
Medium: jasperware



Title: Pitcher
Date: 1891 - 1908
Primary Maker: Josiah Wedgwood & Sons
Medium: jasperware



Title: Pitcher
Date: after 1891
Primary Maker: Staffordshire
Medium: earthenware



Title: Pitcher
Date: c. 1850
Primary Maker: Staffordshire
Medium: earthenware with transfer print



Title: Pitcher
Date: c. 1880
Primary Maker: W. Wood & Company
Medium: stoneware



Title: Pitcher
Date: September 1, 1840
Medium: stoneware



Title: Pitcher
Date: 1908
Medium: earthenware



Title: Pitcher
Medium: earthenware with lustre and transfer print



Title: Pitcher
Medium: parian ware (bisque porcelain)



Title: Pitcher
Medium: earthenware



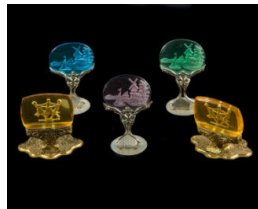
Title: Pitcher
Medium: earthenware with transfer print and lustre



Title: Placecard Holder
Primary Maker: Unknown
Czech
Medium: metal; glass



Title: Placecard Holder
Primary Maker: Unknown
Czech
Medium: glass; metal



Title: Placecard Holder
Primary Maker: Unknown
Czech
Medium: metal; glass



Title: Placecard Holder
Primary Maker: Unknown
Czech
Medium: metal; glass



Title: Placecard Holder
Primary Maker: Unknown
German
Medium: porcelain



Title: Placecard Holder
Primary Maker: Unknown
German
Medium: porcelain



Title: Placecard Holder
Primary Maker: Unknown
German
Medium: porcelain



Title: Placecard Holder
Primary Maker: Unknown
German
Medium: porcelain



Title: Placecard Holder
Primary Maker: Unknown
German
Medium: porcelain



Title: Placecard Holder
Primary Maker: Unknown
German
Medium: porcelain



Title: Placecard Holder
Primary Maker: Unknown
German
Medium: porcelain



Title: Placecard Holder
Primary Maker: Unknown
German
Medium: porcelain



Title: Placecard Holder
Primary Maker: Schierholz
Porcelain
Medium: porcelain



Title: Placecard Holder
Primary Maker: Schierholz
Porcelain
Medium: porcelain



Title: Placecard Holder
Primary Maker: Schierholz
Porcelain
Medium: porcelain



Title: Placecard Holder
Primary Maker: Schierholz
Porcelain
Medium: porcelain



Title: Placecard Holder
Primary Maker: Dresden
Medium: porcelain



Title: Placecard Holder
Primary Maker: Dresden
Medium: porcelain



Title: Placecard Holder
Primary Maker: Schierholz
Porcelain
Medium: porcelain



Title: Placecard Holder
Primary Maker: Schierholz
Porcelain
Medium: porcelain



Title: Placecard Holder
Primary Maker: Schierholz
Porcelain
Medium: porcelain



Title: Placecard Holder
Primary Maker: Schierholz
Porcelain
Medium: porcelain



Title: Plate
Medium: milk glass



Title: Plate
Date: c. 1880
Medium: ironstone with transfer print



Title: Plate
Date: c. 1900
Primary Maker: Gorham Manufacturing Company
Medium: sterling silver



Title: Plate
Date: c. 1891 - 1914
Primary Maker: W.H. Grindley & Company
Medium: earthenware with flow blue transfer print



Title: Plate
Date: c. 1850
Primary Maker: Staffordshire
Medium: stoneware with blue transfer print



Title: Plate
Date: c. 1850
Primary Maker: Staffordshire
Medium: stoneware; blue transfer print



Title: Plate
Date: 1891 - 1912
Primary Maker: Mintons
Medium: porcelain with gold



Title: Plate
Date: 1891 - 1912
Primary Maker: Mintons
Medium: porcelain with gold



Title: Plate
Date: 1843-1855
Primary Maker: Staffordshire
Medium: ironstone with flow blue transfer print



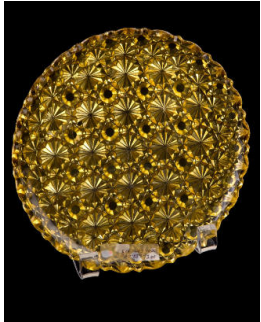
Title: Plate
Date: 1881 - 1920
Primary Maker: Coalport
Medium: porcelain



Title: Plate
Primary Maker: Unknown
American
Medium: flint glass



Title: Plate
Date: 1825-1840
Primary Maker: Unknown
American
Medium: flint glass



Title: Plate
Primary Maker: Unknown
American
Medium: pressed glass



Title: Plate
Medium: glass



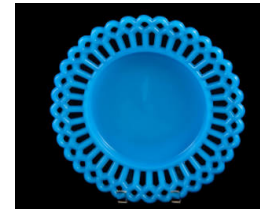
Title: Plate
Medium: glass



Title: Plate
Medium: milk glass



Title: Plate
Medium: milk glass



Title: Plate
Medium: milk glass



Title: Plate
Date: 1896-1907
Medium: milk glass



Title: Plate
Medium: milk glass



Title: Plate
Medium: milk glass



Title: Plate
Medium: milk glass



Title: Plate
Medium: milk glass



Title: Plate
Medium: milk glass



Title: Plate
Medium: milk glass



Title: Plate
Medium: milk glass



Title: Plate
Medium: milk glass



Title: Plate
Medium: milk glass



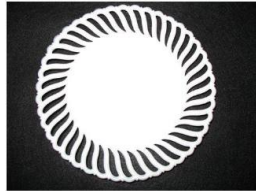
Title: Plate
Medium: milk glass



Title: Plate
Medium: milk glass



Title: Plate
Medium: milk glass



Title: Plate
Medium: milk glass



Title: Plate
Primary Maker: Rue Thiroux
Medium: porcelain



Title: Plate
Primary Maker: Rue Thiroux
Medium: porcelain



Title: Plate
Date: c. 1840
Primary Maker: Podmore,
Walker & Company
Medium: pearlstone with black
transfer print



Title: Plate
Date: 1834-1859
Primary Maker: Podmore,
Walker & Company
Medium: ironstone with black
transfer print



Title: Plate
Medium: milk glass



Title: Plate
Medium: milk glass



Title: Plate
Medium: milk glass



Title: Plate
Medium: milk glass



Title: Plate
Medium: milk glass



Title: Plate
Primary Maker: Holdcroft & Company
Medium: ironstone with black transfer print



Title: Plate
Date: c. 1840
Primary Maker: Staffordshire
Medium: ironstone



Title: Plate
Date: c. 1840
Primary Maker: Staffordshire
Medium: ironstone with black transfer print



Title: Plate
Primary Maker: J. & G. Meakin
Medium: ironstone with purple transfer print



Title: Plate
Primary Maker: Staffordshire
Medium: earthenware with brown transfer print



Title: Plate
Primary Maker: Ralph & James Clews
Medium: earthenware with blue transfer print



Title: Plate
Primary Maker: Ralph & James Clews
Medium: earthenware with blue transfer print



Title: Plate
Date: c. 1822 - 1841
Primary Maker: Staffordshire
Medium: earthenware with red transfer print



Title: Plate
Date: 1878 - 1894
Primary Maker: Staffordshire
Medium: ironstone; flow blue transfer print

Title: Plate
Primary Maker: Manufacture Nationale de Sèvres
Medium: porcelain



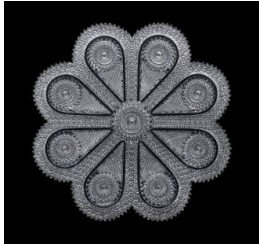
Title: Plate
Medium: milk glass



Title: Platter
Date: after 1912
Primary Maker: Minton
Medium: porcelain with gold



Title: Platter
Date: after 1912
Primary Maker: Minton
Medium: porcelain with gold



Title: Platter
Date: c. 1904-1917
Primary Maker: T.G. Hawkes
& Company
Medium: cut glass



Title: Platter
Date: 1881 - 1920
Primary Maker: Coalport
Medium: porcelain



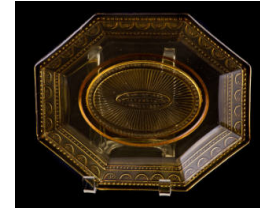
Title: Platter
Date: 1881 - 1920
Primary Maker: Coalport
Medium: porcelain



Title: Platter
Date: 1881 - 1920
Primary Maker: Coalport
Medium: porcelain



Title: Platter
Primary Maker: Unknown
American
Medium: flint glass



Title: Platter
Primary Maker: Unknown
American
Medium: pressed glass



Title: Platter
Date: 1891 - 1912
Primary Maker: Mintons
Medium: porcelain with gold



Title: Platter
Date: after 1912
Primary Maker: Mintons
Medium: porcelain with gold



Title: Platter
Date: c. 1879
Primary Maker: Gillinder &
Sons
Medium: pressed glass



Title: Platter

Date: c. 1879

Primary Maker: Gillinder & Sons

Medium: pressed glass



Title: Platter

Date: c. 1879

Primary Maker: Gillinder & Sons

Medium: pressed glass



Title: Platter

Date: 1911 - 1928

Primary Maker: H.P. Sinclair & Company

Medium: cut glass



Title: Platter

Date: c. 1834 - 1859

Primary Maker: Podmore, Walker & Company

Medium: pearl stoneware; black and white transfer print



Title: Platter

Date: c. 1850

Primary Maker: Podmore, Walker & Company

Medium: ironstone with black transfer print



Title: Platter

Date: 1829 - 1845

Primary Maker: Staffordshire

Medium: earthenware with pink transfer print



Title: Platter

Date: c. 1844

Primary Maker: Ralph & James Clews

Medium: ironstone with blue transfer print



Title: Platter With Deer Handles, Westward Ho

Date: c. 1879

Primary Maker: Gillinder & Sons

Medium: glass



Title: Portrait Plate

Date: 1896-1910

Primary Maker: Hyacinthe Rigaud

Medium: porcelain



Title: Portrait Plate
Date: 1896-1910
Primary Maker: Pierre Mignard
Medium: porcelain



Title: Portrait Plate
Date: 1896 - 1910
Primary Maker: Louise Vigée
Le Brun
Medium: porcelain



Title: Punch Bowl
Date: c. 1900
Primary Maker: T.G. Hawkes
& Company
Medium: cut glass



Title: Punch Bowl
Date: c. 1900
Medium: cut glass



Title: Punch Bowl Base
Date: c. 1900
Medium: cut glass



Title: Punch Cup
Date: c. 1840
Primary Maker: Baccarat
Glasshouse
Medium: flint glass



Title: Ramekin Saucer
Date: 1891-1902
Primary Maker: Mintons
Medium: porcelain with gold



Title: Relish Dish
Date: 1881 - 1920
Primary Maker: Coalport
Medium: porcelain



Title: Relish Dish
Date: 1881 - 1920
Primary Maker: Coalport
Medium: porcelain



Title: Relish Dish
Primary Maker: Unknown
American
Medium: pressed glass



Title: Sake Bottle
Date: c. 1891
Primary Maker: Satsuma
Medium: porcelain with enamel



Title: Salad Plate
Date: 1881 - 1920
Primary Maker: Coalport
Medium: porcelain



Title: Saltcellar
Primary Maker: Unknown
American
Medium: glass



Title: Saltcellar
Primary Maker: Unknown
American
Medium: glass; milk glass



Title: Saltcellar
Primary Maker: Unknown
American
Medium: glass



Title: Saltcellar
Primary Maker: Unknown
American
Medium: glass



Title: Saltcellar
Primary Maker: Unknown
American
Medium: glass



Title: Saltcellar
Primary Maker: Unknown
American
Medium: glass



Title: Saltcellar
Primary Maker: Unknown
American
Medium: glass



Title: Saltcellar
Date: c. 1835
Primary Maker: Unknown
American
Medium: glass



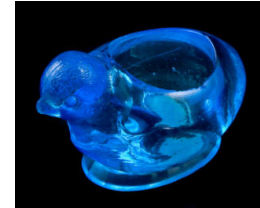
Title: Saltcellar
Primary Maker: Unknown
American
Medium: milk glass



Title: Saltcellar
Primary Maker: Unknown
American
Medium: glass



Title: Saltcellar
Primary Maker: Unknown
American
Medium: flint glass



Title: Saltcellar
Primary Maker: Unknown
American
Medium: pressed glass



Title: Saltcellar
Primary Maker: Unknown
American
Medium: flint glass



Title: Saltcellar
Primary Maker: Unknown
American
Medium: pressed glass



Title: Saltcellar
Primary Maker: Unknown
American
Medium: flint glass



Title: Saltcellar
Date: c. 1830 - 1845
Primary Maker: Boston & Sandwich Glass Company
Medium: glass



Title: Saltcellar
Primary Maker: New England Glass Company
Medium: flint glass



Title: Saltcellar
Primary Maker: New England Glass Company
Medium: flint glass



Title: Saltcellar
Medium: glass



Title: Saltcellar
Date: c. 1910
Primary Maker: Gorham Manufacturing Company
Medium: sterling silver



Title: Saltcellar
Date: c. 1910
Primary Maker: Gorham Manufacturing Company
Medium: sterling silver



Title: Sauceboat
Primary Maker: Staffordshire
Medium: earthenware with flow blue transfer print



Title: Sauceboat
Date: 1881 - 1920
Primary Maker: Coalport
Medium: porcelain



Title: Sauceboat
Medium: earthenware with transfer print



Title: Sauceboat
Date: c. 1910
Primary Maker: Gorham Manufacturing Company
Medium: sterling silver



Title: Sauceboat
Date: c. 1910
Primary Maker: Gorham Manufacturing Company
Medium: sterling silver



Title: Sauceboat
Date: after 1912
Primary Maker: Mintons
Medium: porcelain with gold



Title: Sauceboat
Primary Maker: Staffordshire
Medium: earthenware with transfer print



Title: Sauceboat
Primary Maker: Staffordshire
Medium: earthenware with transfer print



Title: Sauceboat Underplate
Date: 1881 - 1920
Primary Maker: Coalport
Medium: porcelain



Title: Sauceboat Underplate
Date: after 1912
Primary Maker: Mintons
Medium: porcelain with gold



Title: Sauceboat Underplate
Primary Maker: Gorham Manufacturing Company
Medium: sterling silver



Title: Sauce Bowl
Date: 1881 - 1920
Primary Maker: Coalport
Medium: porcelain



Title: Sauce Bowl
Date: c. 1879
Primary Maker: Gillinder & Sons
Medium: pressed glass



Title: Sauce Bowl Underplate
Date: 1881 - 1920
Primary Maker: Coalport
Medium: porcelain



Title: Sauce Dish
Primary Maker: Unknown
American
Medium: pressed glass



Title: Sauce Dish
Primary Maker: Unknown
American
Medium: pressed glass



Title: Sauce Dish
Primary Maker: Unknown
American
Medium: flint glass



Title: Sauce Dish
Primary Maker: Unknown
American
Medium: flint glass



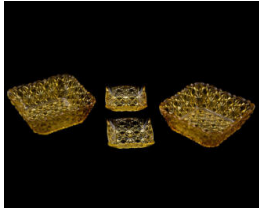
Title: Sauce Dish
Primary Maker: Unknown
American
Medium: pressed glass



Title: Sauce Dish
Primary Maker: Unknown
American
Medium: pressed glass



Title: Sauce Dish
Primary Maker: Unknown
American
Medium: pressed glass



Title: Sauce Dish
Primary Maker: Unknown
American
Medium: pressed glass



Title: Sauce Dish
Primary Maker: Unknown
American
Medium: pressed glass



Title: Sauce Dish
Primary Maker: Unknown
American
Medium: pressed glass



Title: Sauce Dish
Primary Maker: Unknown
American
Medium: pressed glass



Title: Sauce Dish
Primary Maker: Unknown
American
Medium: pressed glass



Title: Sauce Dish
Date: c. 1879
Primary Maker: Gillinder & Sons
Medium: pressed glass



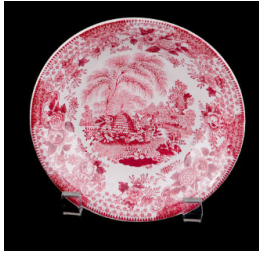
Title: Saucer
Date: 1843 - 1855
Primary Maker: Staffordshire
Medium: ironstone with flow blue transfer print



Title: Saucer
Date: 1881 - 1920
Primary Maker: Coalport
Medium: porcelain



Title: Saucer
Date: 1881 - 1920
Primary Maker: Coalport
Medium: porcelain



Title: Saucer
Primary Maker: Staffordshire
Medium: earthenware with red transfer print



Title: Service Plate
Date: 1891-1912
Primary Maker: Mintons
Medium: porcelain



Title: Service Plate
Date: c. 1906
Primary Maker: Lenox Corporation
Medium: porcelain



Title: Service Plate
Date: 1912-1950
Primary Maker: Mintons
Medium: porcelain



Title: Service Plate
Date: c. 1911
Primary Maker: Heinrich & Company
Medium: porcelain



Title: Service Plate
Date: 1891 - 1932
Primary Maker: W. M. Guérin & Company
Medium: porcelain



Title: Serving Bowl
Date: 1881 - 1920
Primary Maker: Coalport
Medium: porcelain



Title: Serving Bowl
Date: 1881 - 1920
Primary Maker: Coalport
Medium: porcelain



Title: Serving Bowl
Date: 1881 - 1920
Primary Maker: Coalport
Medium: porcelain



Title: Serving Bowl
Date: 1881 - 1920
Primary Maker: Coalport
Medium: porcelain



Title: Serving Bowl
Date: after 1912
Primary Maker: Mintons
Medium: porcelain with gold



Title: Serving Bowl
Date: after 1912
Primary Maker: Mintons
Medium: porcelain with gold



Title: Serving Bowl
Date: 1891 - 1912
Primary Maker: Mintons
Medium: porcelain with gold



Title: Serving Bowl Lid
Date: 1881 - 1920
Primary Maker: Coalport
Medium: porcelain



Title: Serving Bowl Lid
Date: 1881 - 1920
Primary Maker: Coalport
Medium: porcelain



Title: Serving Bowl Lid
Date: after 1912
Primary Maker: Mintons
Medium: porcelain with gold



Title: Serving Bowl Lid
Date: after 1912
Primary Maker: Mintons
Medium: porcelain with gold



Title: Serving Dish
Date: c. 1910
Primary Maker: Gorham
Manufacturing Company
Medium: sterling silver



Title: Serving Dish
Date: c. 1910
Primary Maker: Gorham Manufacturing Company
Medium: sterling silver



Title: Serving Dish Lid
Primary Maker: Gorham Manufacturing Company
Medium: sterling silver



Title: Serving Dish Lid
Date: c. 1910
Primary Maker: Gorham Manufacturing Company
Medium: sterling silver



Title: Serving Platter
Date: 1881 - 1920
Primary Maker: Coalport
Medium: porcelain



Title: Serving Tray
Date: c. 1910
Primary Maker: Gorham Manufacturing Company
Medium: sterling silver



Title: Serving Tray
Date: c. 1900
Primary Maker: T.G. Hawkes & Company
Medium: cut glass



Title: Shallow Bowl
Date: 1881 - 1920
Primary Maker: Coalport
Medium: porcelain



Title: Shallow Bowl
Date: 1881 - 1920
Primary Maker: Coalport
Medium: porcelain



Title: Sherbet Glass
Date: c. 1915
Primary Maker: T.G. Hawkes & Company
Medium: cut glass



Title: Sherbet Glass
Date: c. 1915
Primary Maker: T.G. Hawkes
& Company
Medium: cut glass



Title: Sherbet Glass
Date: c. 1920
Primary Maker: Frederick
Carder
Medium: engraved glass



**Title: Sherbet Glass
Underplate**
Date: c. 1915
Primary Maker: T.G. Hawkes
& Company
Medium: cut glass



Title: Soup Bowl
Date: 1891 - 1912
Primary Maker: Mintons
Medium: porcelain with gold



Title: Soup Bowl
Date: 1881 - 1920
Primary Maker: Coalport
Medium: porcelain



Title: Soup Cup Saucer
Date: 1881 - 1920
Primary Maker: Coalport
Medium: porcelain



Title: Soup Plate
Date: 1891 - 1912
Primary Maker: Mintons
Medium: porcelain with gold



Title: Spooner
Primary Maker: Unknown
American
Medium: pressed glass



Title: Spooner
Primary Maker: Unknown
American
Medium: flint glass



Title: Spooner
Primary Maker: Unknown
American
Medium: pressed glass



Title: Spooner
Primary Maker: Unknown
American
Medium: pressed glass



Title: Spooner
Primary Maker: Unknown
American
Medium: pressed glass



Title: Spooner
Primary Maker: Unknown
American
Medium: pressed glass



Title: Stopper
Primary Maker: Weinranck
and Schmidt
Medium: sterling silver



Title: Stopper
Primary Maker: Weinranck
and Schmidt
Medium: sterling silver



Title: Stopper
Primary Maker: Weinranck
and Schmidt
Medium: sterling silver



Title: Stopper
Primary Maker: Weinranck
and Schmidt
Medium: sterling silver



Title: Sugar Bowl
Date: c. 1910
Primary Maker: Gorham
Manufacturing Company
Medium: sterling silver



Title: Sugar Bowl
Date: after 1912
Primary Maker: Mintons
Medium: porcelain with gold



Title: Sugar Bowl
Primary Maker: Unknown
American
Medium: pressed glass



Title: Sugar Bowl
Date: 1878
Primary Maker: Unknown
American
Medium: glass



Title: Sugar Bowl
Primary Maker: Unknown
American
Medium: pressed glass



Title: Sugar Bowl
Primary Maker: Unknown
American
Medium: pressed glass



Title: Sugar Bowl
Primary Maker: Unknown
American
Medium: flint glass



Title: Sugar Bowl
Primary Maker: Unknown
American
Medium: flint glass



Title: Sugar Bowl
Primary Maker: Unknown
American
Medium: pressed glass



Title: Sugar Bowl
Primary Maker: Unknown
American
Medium: pressed glass



Title: Sugar Bowl
Primary Maker: Unknown
American
Medium: pressed glass



Title: Sugar Bowl
Primary Maker: Unknown
American
Medium: pressed glass



Title: Sugar Bowl
Primary Maker: Unknown
American
Medium: flint glass



Title: Sugar Bowl
Primary Maker: Unknown
American
Medium: pressed glass



Title: Sugar Bowl
Primary Maker: Unknown
American
Medium: pressed glass



Title: Sugar Bowl
Primary Maker: Unknown
American
Medium: pressed glass



Title: Sugar Bowl
Primary Maker: Unknown
American
Medium: pressed glass



Title: Sugar Bowl
Medium: milk glass



Title: Sugar Bowl
Medium: milk glass



Title: Sugar Bowl
Date: 1881 - 1920
Primary Maker: Coalport
Medium: porcelain



Title: Sugar Bowl
Primary Maker: Rue Thiroux
Medium: porcelain



Title: Sugar Bowl
Primary Maker: Rue Thiroux
Medium: porcelain



Title: Sugar Bowl
Medium: milk glass



Title: Sugar Bowl
Primary Maker: Manufacture
Nationale de Sèvres
Medium: porcelain



Title: Sugar Bowl
Primary Maker: Manufacture
Nationale de Sèvres
Medium: porcelain



Title: Sugar Bowl Lid
Primary Maker: Rue Thiroux
Medium: porcelain



Title: Sugar Bowl Lid
Date: c. 1910
Primary Maker: Gorham
Manufacturing Company
Medium: sterling silver



Title: Sugar Bowl Lid
Date: after 1912
Primary Maker: Minton
Medium: porcelain with gold



Title: Sugar Bowl Lid
Primary Maker: Manufacture
Nationale de Sèvres
Medium: porcelain



Title: Sugar Bowl Lid
Primary Maker: Manufacture
Nationale de Sèvres
Medium: porcelain



Title: Sugar Bowl Lid
Date: 1878
Primary Maker: Unknown
American
Medium: glass



Title: Sugar Bowl Lid
Primary Maker: Unknown
American
Medium: flint glass



Title: Sugar Bowl Lid
Primary Maker: Unknown
American
Medium: pressed glass



Title: Sugar Bowl Lid
Medium: milk glass



Title: Sugar Bowl Lid
Medium: milk glass



Title: Sugar Bowl Lid
Date: 1881 - 1920
Primary Maker: Coalport
Medium: porcelain



Title: Sugar Bowl Lid
Medium: milk glass



Title: Supreme Glass
Date: c. 1915
Primary Maker: T.G. Hawkes
& Company
Medium: cut glass



Title: Supreme Glass
Date: c. 1915
Primary Maker: T.G. Hawkes
& Company
Medium: cut glass



Title: Supreme Glass
Date: c. 1915
Primary Maker: T.G. Hawkes
& Company
Medium: cut glass



Title: Supreme Glass
Date: c. 1915
Primary Maker: T.G. Hawkes
& Company
Medium: cut glass



Title: Supreme Glass
Date: c. 1915
Primary Maker: T.G. Hawkes
& Company
Medium: cut glass



Title: Supreme Glass
Date: c. 1915
Primary Maker: T.G. Hawkes
& Company
Medium: cut glass



Title: Supreme Glass
Date: c. 1915
Primary Maker: T.G. Hawkes
& Company
Medium: cut glass



Title: Supreme Glass
Date: c. 1915
Primary Maker: T.G. Hawkes
& Company
Medium: cut glass



Title: Supreme Glass
Underplate
Date: c. 1915
Primary Maker: T.G. Hawkes
& Company
Medium: cut glass



Title: Supreme Glass Underplate
Date: c. 1915
Primary Maker: T.G. Hawkes & Company
Medium: cut glass



Title: Supreme Glass Underplate
Date: c. 1915
Primary Maker: T.G. Hawkes & Company
Medium: cut glass



Title: Supreme Glass Underplate
Date: c. 1915
Primary Maker: T.G. Hawkes & Company
Medium: cut glass



Title: Supreme Glass Underplate
Date: c. 1915
Primary Maker: T.G. Hawkes & Company
Medium: cut glass



Title: Supreme Glass Underplate
Date: c. 1915
Primary Maker: T.G. Hawkes & Company
Medium: cut glass



Title: Supreme Glass Underplate
Date: c. 1915
Primary Maker: T.G. Hawkes & Company
Medium: cut glass



Title: Swan Dish
Medium: milk glass



Title: Swan Dish Lid
Medium: milk glass



Title: Sweet Meat Bowl
Date: 1924
Medium: porcelain



**Title: Sweet Meat Bowl
Lid**
Date: 1924
Medium: porcelain



Title: Syrup Pitcher
Date: 1881 - 1920
Primary Maker: Coalport
Medium: porcelain



Title: Syrup Pitcher
Date: c. 1910
Primary Maker: Gorham
Manufacturing Company
Medium: sterling silver



**Title: Syrup Pitcher
Underplate**
Date: c. 1910
Primary Maker: Gorham
Manufacturing Company
Medium: sterling silver



Title: Teacup
Date: 1881 - 1920
Primary Maker: Coalport
Medium: porcelain



Title: Teacup
Date: 1881 - 1920
Primary Maker: Coalport
Medium: porcelain



Title: Teacup
Date: 1881 - 1920
Primary Maker: Coalport
Medium: porcelain



Title: Teacup
Primary Maker: Rue Thiroux
Medium: porcelain



Title: Teacup Saucer
Date: 1881 - 1920
Primary Maker: Coalport
Medium: porcelain



Title: Teacup Saucer

Date: 1881 - 1920

Primary Maker: Coalport

Medium: porcelain



Title: Teacup Saucer

Primary Maker: Rue Thiroux

Medium: porcelain



Title: Tea Infuser

Primary Maker: Unknown

European

Medium: silver



Title: Teapot

Date: c. 1900

Primary Maker: H.P. Sinclair & Company

Medium: cut glass



Title: Teapot

Date: c. 1910

Primary Maker: Gorham Manufacturing Company

Medium: sterling silver with ivory



Title: Teapot

Date: after 1912

Primary Maker: Mintons

Medium: porcelain with gold



Title: Teapot

Date: c. 1910

Primary Maker: T.G. Hawkes & Company

Medium: engraved glass



Title: Teapot

Date: 1881 - 1920

Primary Maker: Coalport

Medium: porcelain



Title: Teapot

Medium: earthenware



Title: Teapot

Medium: earthenware with lustre



Title: Teapot

Date: 1881 - 1920

Primary Maker: Coalport

Medium: porcelain



Title: Teapot

Primary Maker: Rue Thiroux

Medium: porcelain



Title: Teapot

Primary Maker: W. Wood & Company

Medium: earthenware with transfer print



Title: Teapot

Primary Maker: Manufacture Nationale de Sèvres

Medium: porcelain



Title: Teapot Lid

Primary Maker: Rue Thiroux

Medium: porcelain



Title: Teapot Lid

Date: c. 1900

Primary Maker: H.P. Sinclair & Company

Medium: cut glass



Title: Teapot Lid

Primary Maker: W. Wood & Company

Medium: earthenware with transfer print



Title: Teapot Lid

Date: after 1912

Primary Maker: Minton's

Medium: porcelain with gold



Title: Teapot Lid
Primary Maker: Manufacture
Nationale de Sèvres
Medium: porcelain



Title: Teapot Lid
Date: c. 1910
Primary Maker: T.G. Hawkes
& Company
Medium: engraved glass



Title: Teapot Lid
Date: 1881 - 1920
Primary Maker: Coalport
Medium: porcelain



Title: Teapot Lid
Medium: earthenware with
lustre



Title: Teapot Lid
Date: 1881 - 1920
Primary Maker: Coalport
Medium: porcelain



Title: Tea Service Tray
Date: c. 1910
Primary Maker: Gorham
Manufacturing Company
Medium: sterling silver with
glass



**Title: Texian Campaigne
Plate**
Primary Maker: James Beech
Medium: earthenware with
brown transfer print



**Title: Texian Campaigne
Plate**
Primary Maker: James Beech
Medium: earthenware with
purple transfer print



**Title: Texian Campaigne
Plate**
Primary Maker: James Beech
Medium: earthenware with
brown transfer print



Title: Texian Campaigne Plate

Primary Maker: James Beech

Medium: earthenware with brown transfer print



Title: Texian Campaigne Platter

Primary Maker: James Beech

Medium: earthenware with blue transfer print



Title: Toast Cup

Date: c. 1902

Primary Maker: Artus Van Briggie

Medium: earthenware with matte glaze



Title: Toothpick Holder

Primary Maker: Unknown American

Medium: glass



Title: Toothpick Holder

Primary Maker: Unknown American

Medium: pressed glass



Title: Toothpick Holder

Primary Maker: Unknown American

Medium: pressed glass



Title: Toothpick Holder

Primary Maker: Unknown American

Medium: pressed glass



Title: Toothpick Holder

Primary Maker: Unknown American

Medium: pressed glass

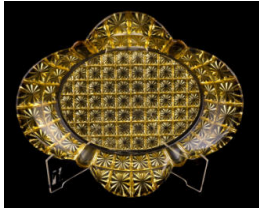


Title: Tray

Date: 1908

Primary Maker: Gorham Manufacturing Company

Medium: sterling silver



Title: Tray
Primary Maker: Unknown
American
Medium: pressed glass



Title: Tumbler
Date: c. 1915
Primary Maker: T.G. Hawkes
& Company
Medium: cut glass



Title: Tumbler
Date: c. 1915
Primary Maker: T.G. Hawkes
& Company
Medium: cut glass



Title: Tumbler
Date: c. 1915
Primary Maker: T.G. Hawkes
& Company
Medium: cut glass



Title: Tumbler
Date: c. 1915
Primary Maker: T.G. Hawkes
& Company
Medium: cut glass



Title: Tumbler
Date: c. 1915
Primary Maker: T.G. Hawkes
& Company
Medium: cut glass



Title: Tumbler
Date: c. 1915
Primary Maker: T.G. Hawkes
& Company
Medium: cut glass



Title: Tumbler
Date: c. 1915
Primary Maker: T.G. Hawkes
& Company
Medium: cut glass



Title: Tumbler
Date: c. 1915
Primary Maker: T.G. Hawkes
& Company
Medium: cut glass



Title: Tumbler
Primary Maker: Unknown
American
Medium: pressed glass



Title: Tumbler
Primary Maker: Unknown
American
Medium: pressed glass



Title: Tumbler
Primary Maker: Unknown
American
Medium: glass



Title: Tumbler
Primary Maker: Unknown
American
Medium: pressed glass



Title: Tumbler
Primary Maker: Unknown
American
Medium: flint glass



Title: Tumbler
Medium: earthenware; copper
glaze; enamel



Title: Tureen
Date: 1851-1891
Primary Maker: Staffordshire
Medium: ironstone with
transfer print



Title: Tureen
Primary Maker: Staffordshire
Medium: earthenware with
transfer print



Title: Tureen
Date: c. 1850
Primary Maker: Staffordshire
Medium: stoneware with
transfer print



Title: Tureen
Date: c. 1850
Primary Maker: Staffordshire
Medium: stoneware with transfer print



Title: Tureen
Date: 1881
Primary Maker: Staffordshire
Medium: earthenware with blue transfer print



Title: Tureen
Date: 1829-1845
Primary Maker: Staffordshire
Medium: earthenware with transfer print



Title: Tureen
Primary Maker: Staffordshire
Medium: earthenware with transfer print



Title: Tureen
Primary Maker: Staffordshire
Medium: earthenware with blue transfer print



Title: Tureen
Primary Maker: Staffordshire
Medium: earthenware with transfer print



Title: Tureen Ladle
Date: c. 1850
Primary Maker: Staffordshire
Medium: stoneware with transfer print



Title: Tureen Lid
Date: 1851-1891
Primary Maker: Staffordshire
Medium: ironstone with transfer print



Title: Tureen Lid
Primary Maker: Staffordshire
Medium: earthenware with transfer print



Title: Tureen Lid
Date: c. 1850
Primary Maker: Staffordshire
Medium: stoneware with transfer print



Title: Tureen Lid
Date: c. 1850
Primary Maker: Staffordshire
Medium: stoneware with transfer print



Title: Tureen Lid
Date: 1881
Primary Maker: Staffordshire
Medium: earthenware with blue transfer print



Title: Tureen Lid
Date: 1829-1845
Primary Maker: Staffordshire
Medium: earthenware with transfer print



Title: Tureen Lid
Primary Maker: Staffordshire
Medium: earthenware with transfer print



Title: Tureen Lid
Primary Maker: Staffordshire
Medium: earthenware with blue transfer print



Title: Tureen Lid
Primary Maker: Staffordshire
Medium: earthenware with transfer print



Title: Tureen Underplate
Date: c. 1850
Primary Maker: Staffordshire
Medium: stoneware with transfer print



Title: Tureen Underplate
Date: c. 1850
Primary Maker: Staffordshire
Medium: stoneware with transfer print



Title: Underplate
Date: c. 1915
Primary Maker: T.G. Hawkes
& Company
Medium: cut glass



Title: Underplate
Date: c. 1915
Primary Maker: T.G. Hawkes
& Company
Medium: cut glass



Title: Underplate
Medium: cut glass



Title: Underplate
Primary Maker: Staffordshire
Medium: earthenware with
blue transfer print



Title: Utility Bowl
Medium: cut glass



Title: Vegetable Bowl
Date: c. 1850
Primary Maker: Staffordshire
Medium: stoneware with
transfer print



Title: Vegetable Bowl
Primary Maker: Unknown
American
Medium: flint glass



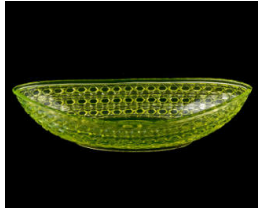
Title: Vegetable Bowl
Date: 1891-1912
Primary Maker: Mintons
Medium: porcelain with gold



Title: Vegetable Bowl Lid
Date: c. 1850
Primary Maker: Staffordshire
Medium: stoneware with
transfer print



Title: Vegetable Bowl Lid
Date: 1891-1912
Primary Maker: Mintons
Medium: porcelain with gold



Title: Vegetable Dish
Primary Maker: Unknown
American
Medium: pressed glass



Title: Vegetable Dish
Primary Maker: Unknown
American
Medium: pressed glass



Title: Vegetable Dish
Primary Maker: Unknown
American
Medium: pressed glass



Title: Waste Bowl
Date: c. 1910
Primary Maker: Gorham
Manufacturing Company
Medium: sterling silver with
gold wash



Title: Water Decanter
Primary Maker: Unknown
American
Medium: pressed glass



Title: Water Decanter
Primary Maker: Unknown
American
Medium: pressed glass



**Title: Water Decanter
Tumbler**
Primary Maker: Unknown
American
Medium: pressed glass



**Title: Water Goblet,
Westward Ho**
Date: c. 1879
Primary Maker: Gillinder &
Sons
Medium: pressed glass



Title: Water Pitcher
Date: 1906
Primary Maker: Gorham Manufacturing Company
Medium: sterling silver



Title: Water Pitcher
Primary Maker: Unknown American
Medium: pressed glass



Title: Water Pitcher
Primary Maker: Unknown American
Medium: pressed glass



Title: Water Pitcher
Primary Maker: Unknown American
Medium: pressed glass



Title: Water Tray
Primary Maker: Unknown American
Medium: pressed glass



Title: Whisky Bottle
Date: c. 1900
Medium: cut glass



Title: Whisky Bottle Stopper
Date: c. 1900
Medium: cut glass

Title: Wine Glass
Date: c. 1915
Primary Maker: T.G. Hawkes & Company
Medium: cut glass



Title: "Woman at Well" Pitcher
Primary Maker: Staffordshire
Medium: ironstone