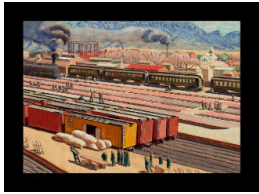


Basic Report



Title: Albuquerque Railroad Yards

Primary Maker: Ernest Leonard Blumenschein
Medium: watercolor and pen on paper



Title: Box Cars and Railroad Tracks

Primary Maker: Ernest Leonard Blumenschein
Medium: oil on canvas



Title: Canyon Red and Black

Date: 1933
Primary Maker: Ernest Leonard Blumenschein
Medium: oil on canvas



Title: The Chief Goes Through

Date: 1956
Primary Maker: Ernest Leonard Blumenschein
Medium: oil on canvas



Title: The Extraordinary Affray

Date: 1926
Primary Maker: Ernest Leonard Blumenschein
Medium: oil on canvas



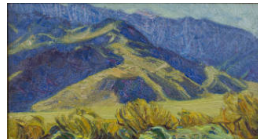
Title: Green Aspen

Date: 1935
Primary Maker: Ernest Leonard Blumenschein
Medium: oil on canvas mounted to academy board



Title: Hawk Shield, Medicine Man

Date: c. 1917
Primary Maker: Ernest Leonard Blumenschein
Medium: oil on canvas



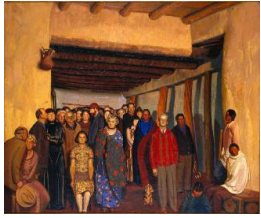
Title: Landscape with Blue Hills

Primary Maker: Ernest Leonard Blumenschein
Medium: oil on board



Title: Mountains Near Taos

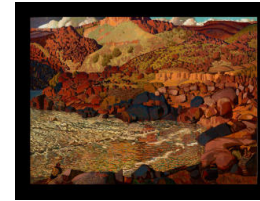
Date: 1955
Primary Maker: Ernest Leonard Blumenschein
Medium: oil on hardboard



Title: Ourselves and Taos Neighbors
Date: c. 1940
Primary Maker: Ernest Leonard Blumenschein
Medium: oil on canvas



Title: Plasterers of Taos
Date: 1932
Primary Maker: Ernest Leonard Blumenschein
Medium: oil on canvas



Title: Rio Grande Canyon
Primary Maker: Ernest Leonard Blumenschein
Medium: oil on canvas



Title: Rocky Trail
Date: 1955
Primary Maker: Ernest Leonard Blumenschein
Medium: oil on canvas mounted to hardboard



Title: Taos Entertains the Cheyennes
Date: c. 1918
Primary Maker: Ernest Leonard Blumenschein
Medium: oil on canvas



Title: Untitled
Primary Maker: Ernest Leonard Blumenschein
Medium: oil on canvas