

# Basic Report

---



**Title: L'Aurora Cameo Brooch**

**Medium:** shell and gold



**Title: Bangle Bracelet**

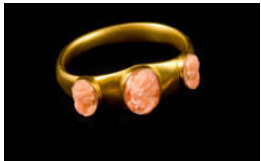
**Date:** c. 1900

**Medium:** gold (14K) with glass



**Title: Brooch**

**Medium:** stone and metal with seed pearls and cabochon sapphire



**Title: Cameo Bracelet**

**Medium:** gold (18K) and coral



**Title: Cameo Brooch**

**Medium:** shell and gold with pearls



**Title: Cameo Brooch**

**Medium:** agate stone and gold (14K) with seed pearls and diamonds



**Title: Cameo Brooch**

**Medium:** shell and metal



**Title: Cameo Brooch**

**Medium:** gold (18K) and coral with diamonds



**Title: Cameo Brooch**

**Medium:** shell and gold



**Title: Cameo Brooch**  
**Medium:** shell and gold



**Title: Cameo Brooch**  
**Medium:** shell and gold



**Title: Cameo Brooch**  
**Medium:** shell and gold



**Title: Cameo Brooch**  
**Medium:** shell and gold



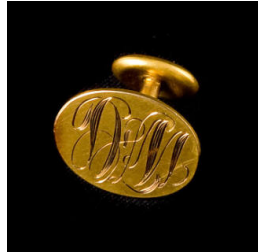
**Title: Cameo Necklace**  
**Medium:** gold (18K) and coral



**Title: Cuff Link**  
**Medium:** platinum with ruby and diamonds



**Title: Cuff Link**  
**Medium:** gold and turquoise



**Title: Cuff Link**  
**Medium:** gold (14K)

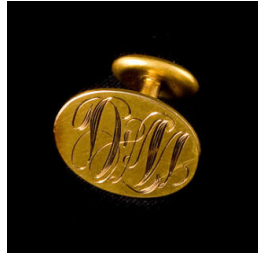


**Title: Cuff Link**  
**Medium:** gold and turquoise



**Title: Cuff Link**

**Medium:** platinum with ruby and diamonds



**Title: Cuff Link**

**Medium:** gold (14K)



**Title: Enamel Earrings**

**Medium:** gold with diamonds and enamel



**Title: Enamel Earrings**

**Medium:** gold with diamonds and enamel



**Title: Locket**

**Medium:** glass and metal with rhinestone



**Title: Locket**

**Medium:** gold and metal with glass



**Title: Locket**

**Medium:** gold, metal, and glass with diamond



**Title: Locket**

**Medium:** gold, metal, and glass with diamond



**Title: Mourning Jewelry Brooch**

**Medium:** enamel and metal



**Title: Mourning Jewelry Brooch**

**Medium:** gold and enamel



**Title: Mourning Jewelry Brooch**

**Medium:** gold and enamel with pearl



**Title: Mourning Jewelry Pendant**

**Medium:** glass and metal with seed pearls



**Title: Photograph Brooch**

**Medium:** metal and porcelain



**Title: Photograph Brooch**

**Medium:** metal and porcelain



**Title: Photograph Brooch**

**Medium:** metal and porcelain



**Title: Stickpin**

**Medium:** gold and turquoise



**Title: Stickpin**

**Medium:** gold (14K)



**Title: Tie Tack**

**Medium:** platinum with ruby and diamonds



**Title: Vinaigrette Brooch**

**Date:** c. 1900-1910

**Primary Maker:** T.G. Hawkes  
& Company

**Medium:** sterling silver and cut  
glass