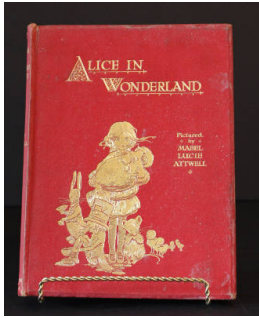


Basic Report



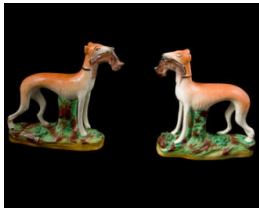
Title: Alice in Wonderland
Date: 1911
Primary Maker: Lewis Carroll
Medium: printed text and ink on paper



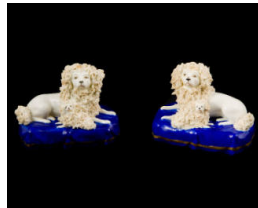
Title: Amber Inverted Thumbprint Water Pitcher
Primary Maker: Unknown American
Medium: pressed glass



Title: Amber Valencian Waffle Tall Compote
Primary Maker: Unknown American
Medium: pressed glass



Title: Animal Figurine
Primary Maker: Staffordshire
Medium: earthenware



Title: Animal Figurine
Date: 1756-1769
Primary Maker: Chelsea Porcelain Manufactory
Medium: earthenware



Title: Animal Figurine
Date: 1756-1769
Primary Maker: Chelsea Porcelain Manufactory
Medium: earthenware



Title: Animal Figurine
Primary Maker: Staffordshire
Medium: earthenware



Title: Animal Figurine
Primary Maker: Staffordshire
Medium: earthenware



Title: Animal Figurine
Primary Maker: Staffordshire
Medium: earthenware



Title: Animal Figurine
Primary Maker: Staffordshire
Medium: porcelain



Title: Animal Figurine
Primary Maker: Staffordshire
Medium: earthenware



Title: Animal Figurine
Primary Maker: Staffordshire
Medium: earthenware



Title: Animal Figurine
Primary Maker: Staffordshire
Medium: earthenware



Title: Animal Figurine
Primary Maker: Staffordshire
Medium: earthenware



Title: Animal Figurine
Primary Maker: Staffordshire
Medium: earthenware



Title: Animal Figurine
Primary Maker: Staffordshire
Medium: earthenware



Title: Animal Figurine
Primary Maker: Staffordshire
Medium: earthenware



Title: Animal Figurine
Primary Maker: Staffordshire
Medium: earthenware



Title: Animal Figurine
Primary Maker: Staffordshire
Medium: earthenware



Title: Animal Figurine
Primary Maker: Staffordshire
Medium: earthenware



Title: Animal Figurine
Primary Maker: Staffordshire
Medium: earthenware



Title: Animal Figurine
Primary Maker: Staffordshire
Medium: earthenware



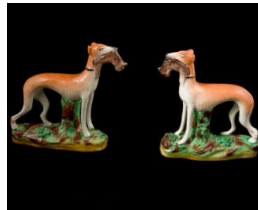
Title: Animal Figurine
Primary Maker: Staffordshire
Medium: earthenware



Title: Animal Figurine
Primary Maker: Staffordshire
Medium: earthenware



Title: Animal Figurine
Primary Maker: Staffordshire
Medium: earthenware



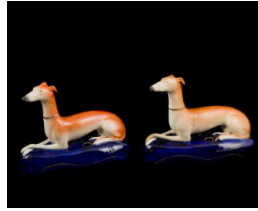
Title: Animal Figurine
Primary Maker: Staffordshire
Medium: earthenware



Title: Animal Figurine
Primary Maker: Staffordshire
Medium: earthenware



Title: Animal Figurine
Primary Maker: Staffordshire
Medium: earthenware



Title: Animal Figurine
Primary Maker: Staffordshire
Medium: earthenware



Title: Animal Figurine
Primary Maker: Staffordshire
Medium: earthenware



Title: Arm Chair
Date: c.1900
Primary Maker: Unknown
American
Medium: mahogany with silk



Title: Armchair
Date: c.1900
Primary Maker: Robert
Mitchell Furniture Company
Medium: mahogany with cloth



Title: Atomizer
Primary Maker: Baccarat
Glasshouse
Medium: glass; brass; rubber



Title: L'Aurora Cameo Brooch
Medium: shell and gold



Title: Ballerina Figurine
Primary Maker: Müller &
Company
Medium: porcelain



Title: Bangle Bracelet
Medium: metal



Title: Bangle Bracelet
Date: c. 1900
Medium: gold



Title: Bangle Bracelet
Date: c. 1900
Medium: gold (14K) with glass



Title: Bangle Bracelet
Date: c. 1900
Medium: gold (14K) with glass



Title: Barber Bottle
Primary Maker: Unknown
American
Medium: pressed glass



Title: Barber Bottle
Medium: glass with enamel



Title: Basket
Medium: pressed glass



Title: Basket
Date: c. 1920-1930
Primary Maker: Gorham
Manufacturing Company
Medium: cut glass



Title: Basket
Primary Maker: T.G. Hawkes
& Company
Medium: cut glass



Title: Basket
Primary Maker: T.G. Hawkes
& Company
Medium: cut glass



Title: Basket
Primary Maker: T.G. Hawkes
& Company
Medium: cut glass



Title: Basket
Primary Maker: T.G. Hawkes
& Company
Medium: cut glass



Title: Basket
Primary Maker: T.G. Hawkes
& Company
Medium: cut glass



Title: Basket
Primary Maker: Weinranck
and Schmidt
Medium: cast silver



Title: Basket
Primary Maker: Weinranck
and Schmidt
Medium: sterling silver



Title: Basket
Primary Maker: T.G. Hawkes
& Company
Medium: cut glass



Title: Basket
Primary Maker: T.G. Hawkes
& Company
Medium: cut glass



Title: Basket
Medium: cut glass



Title: Basket
Medium: cut glass



Title: Basket
Primary Maker: T.G. Hawkes
& Company
Medium: cut glass



Title: Basket
Primary Maker: T.G. Hawkes
& Company
Medium: copper wheel and
gemetric cut glass



Title: Basket
Primary Maker: T.G. Hawkes
& Company
Medium: cut glass



Title: Bench
Date: c. 1900
Primary Maker: Unknown
American
Medium: mahogany with cloth
and brass



Title: Berry Bowl
Primary Maker: Unknown
American
Medium: pressed glass



Title: Berry Bowl
Primary Maker: Unknown
American
Medium: pressed glass



Title: Black Bear Pomade
Medium: glass



Title: Blotter
Medium: bronze with art glass



Title: Blotter
Date: c. 1900
Primary Maker: Louis Comfort
Tiffany
Medium: brass with abalone
shell and paper



Title: Blotter Corner
Date: c. 1898-1906
Primary Maker: Tiffany Studios
Medium: bronze with favrile glass



Title: Blotter Corner
Date: c. 1898-1906
Primary Maker: Tiffany Studios
Medium: bronze with favrile glass



Title: Blotter Corner
Date: c. 1898-1906
Primary Maker: Tiffany Studios
Medium: bronze with favrile glass



Title: Blotter Corner
Date: c. 1898-1906
Primary Maker: Tiffany Studios
Medium: bronze with favrile glass



Title: Blotter End Strip
Date: c. 1900
Primary Maker: Louis Comfort Tiffany
Medium: brass with abalone shell



Title: Blotter End Strip
Primary Maker: Tiffany Studios
Medium: bronze



Title: Blotter End Strip
Primary Maker: Tiffany Studios
Medium: bronze



Title: Blotter End Strip
Date: c. 1900
Primary Maker: Louis Comfort Tiffany
Medium: brass with abalone shell



Title: Bonnet Brush
Date: c. 1910
Primary Maker: Unger Brothers
Medium: sterling silver with wood



Title: Bookend
Date: c. 1900
Primary Maker: Louis Comfort Tiffany
Medium: brass with abalone shell



Title: Bottle
Primary Maker: Unknown American
Medium: blown flint glass



Title: Bottle
Primary Maker: Weinranck and Schmidt
Medium: glass



Title: Bottle
Primary Maker: Weinranck and Schmidt
Medium: glass



Title: Bottle
Primary Maker: Weinranck and Schmidt
Medium: glass



Title: Bottle
Primary Maker: Weinranck and Schmidt
Medium: glass



Title: Bottle
Medium: glass



Title: Bottle
Medium: glass



Title: Bottle
Medium: glass



Title: Bottle
Primary Maker: Satsuma
Medium: porcelain with enamel



Title: Boudoir Lamp
Date: c. 1876-1917
Medium: cut glass; gilded silver



Title: Bouillon Cup
Date: 1873 - 1891
Primary Maker: Minton's
Medium: porcelain with gold



Title: Bouillon Cup
Date: 1881 - 1920
Primary Maker: Coalport
Medium: porcelain



**Title: Bouillon Cup
Saucer**
Date: 1891 - 1912
Primary Maker: Minton's
Medium: porcelain with gold



Title: Bowl
Date: c. 1850
Primary Maker: Staffordshire
Medium: earthenware; pink transfer print



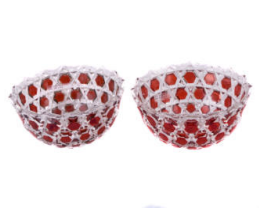
Title: Bowl
Primary Maker: Staffordshire
Medium: earthenware with blue transfer print



Title: Bowl
Primary Maker: Pairpoint Manufacturing Company
Medium: cut glass



Title: Bowl
Date: c. 1900
Primary Maker: Pairpoint Manufacturing Company
Medium: cut glass



Title: Bowl
Primary Maker: Unknown American
Medium: pressed glass



Title: Bowl
Primary Maker: Unknown American
Medium: glass



Title: Bowl
Primary Maker: Unknown American
Medium: flint glass



Title: Bowl
Primary Maker: Unknown American
Medium: flint glass



Title: Bowl
Primary Maker: Boston & Sandwich Glass Company
Medium: glass



Title: Bowl
Medium: milk glass



Title: Bowl
Date: c. 1900
Primary Maker: Satsuma
Medium: porcelain with enamel



Title: Bowl
Primary Maker: Satsuma
Medium: porcelain



Title: Bowl
Primary Maker: Satsuma
Medium: porcelain with enamel



Title: Bowl
Primary Maker: Satsuma
Medium: porcelain with enamel



Title: Bowl
Date: c. 1891
Primary Maker: Satsuma
Medium: porcelain with enamel



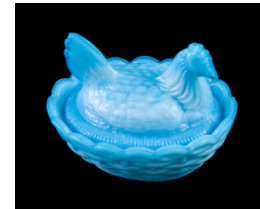
Title: Bowl
Date: c. 1891
Primary Maker: Satsuma
Medium: porcelain with enamel



Title: Bowl Lid
Date: 1881 - 1920
Primary Maker: Coalport
Medium: porcelain



Title: Bowl Lid
Medium: milk glass



Title: Bowl Lid
Primary Maker: Vallerysthal
Medium: milk glass



Title: Bowl Lid
Primary Maker: Vallerysthal
Medium: milk glass



Title: Box
Medium: bronze with art glass



Title: Box
Primary Maker: Satsuma
Medium: porcelain with enamel



Title: Box
Primary Maker: Unknown
French
Medium: metal; enamel



Title: Box
Primary Maker: Unknown
French
Medium: metal; enamel



Title: Box
Primary Maker: Unknown
Japanese
Medium: porcelain



Title: Box
Primary Maker: Unknown
French
Medium: metal; enameled



Title: Box Lid
Primary Maker: Satsuma
Medium: porcelain



Title: Bread-and-Butter Plate
Date: 1881 - 1920
Primary Maker: Coalport
Medium: porcelain



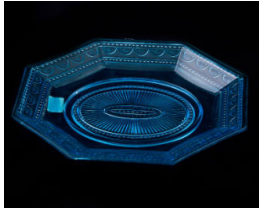
Title: Bread-and-Butter Plate
Date: 1891 - 1912
Primary Maker: Mintons
Medium: porcelain with gold



Title: Bread Tray
Primary Maker: Unknown
American
Medium: pressed glass



Title: Bread Tray
Primary Maker: Unknown
American
Medium: pressed glass



Title: Bread Tray
Primary Maker: Unknown
American
Medium: pressed glass



Title: Brooch
Medium: stone and metal with
seed pearls and cabochon
sapphire



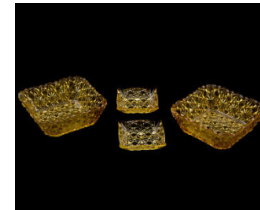
Title: Bust of Napoleon
Date: c. 1900
Primary Maker: Galileo Pochini
Medium: marble



Title: Butter Chip
Date: 1891 - 1912
Primary Maker: Mintons
Medium: porcelain with gold



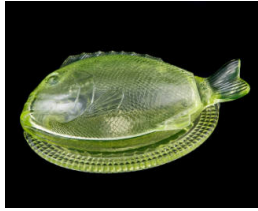
Title: Butter Chip
Date: 1891 - 1912
Primary Maker: Mintons
Medium: porcelain with gold



Title: Butter Chip
Primary Maker: Unknown
American
Medium: pressed glass



Title: Butter Dish
Primary Maker: Unknown
American
Medium: pressed glass



Title: Butter Dish
Primary Maker: Unknown
American
Medium: glass



Title: Butter Dish
Primary Maker: Unknown
American
Medium: pressed glass



Title: Butter Dish
Primary Maker: Unknown
American
Medium: pressed glass



Title: Butter Dish
Primary Maker: Unknown
American
Medium: pressed glass



Title: Butter Dish
Primary Maker: Unknown
American
Medium: pressed glass



Title: Butter Dish
Primary Maker: Unknown
American
Medium: pressed glass



Title: Butter Dish
Medium: glass



Title: Butter Dish Cover
Medium: glass



Title: Butter Dish Lid
Primary Maker: Unknown
American
Medium: glass



Title: Butter Dish Lid
Primary Maker: Unknown
American
Medium: pressed glass



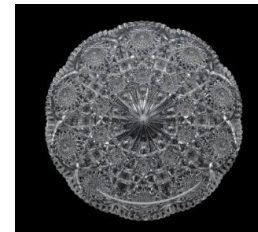
Title: Buttonhook
Date: c. 1910
Primary Maker: Unger
Brothers
Medium: sterling silver with
silver plated steel



Title: Cachepot
Medium: porcelain with brass



Title: Cake Plate
Date: c.1900
Primary Maker: Pairpoint
Manufacturing Company
Medium: cut glass



Title: Cake Plate
Date: c. 1900
Primary Maker: Pairpoint
Manufacturing Company
Medium: cut glass



Title: Cake Plate
Date: c. 1920
Primary Maker: Frederick Carder
Medium: engraved glass



Title: Cake Plate
Date: c. 1920
Primary Maker: Lazeyras, Rosenfeld, and Lehman
Medium: porcelain



Title: Calling Card Receiver
Date: 1857
Medium: bronze; porcelain



Title: Callous Knife
Date: c. 1910
Primary Maker: Unger Brothers
Medium: sterling silver with steel



Title: Cameo Bracelet
Medium: gold (18K) and coral



Title: Cameo Brooch
Medium: shell and gold with pearls



Title: Cameo Brooch
Medium: agate stone and gold (14K) with seed pearls and diamonds



Title: Cameo Brooch
Medium: shell and metal



Title: Cameo Brooch
Medium: gold (18K) and coral with diamonds



Title: Cameo Brooch
Medium: shell and gold



Title: Cameo Brooch
Medium: shell and gold



Title: Cameo Brooch
Medium: shell and gold



Title: Cameo Brooch
Medium: shell and gold



Title: Cameo Brooch
Medium: shell and gold



Title: Cameo Necklace
Medium: gold (18K) and coral



Title: Cameo Ring
Medium: gold; agate or shell



Title: Cameo Ring
Medium: gold (14K); agate or shell



Title: Candelabra
Medium: iron; bronze



Title: Candelabra
Primary Maker: T.G. Hawkes & Company
Medium: cut glass with silver



Title: Candelabra
Date: c. 1900
Medium: porcelain



Title: Candelabra
Date: c. 1887
Medium: porcelain



Title: Candelabra

Date: c. 1900

Medium: porcelain



Title: Candelabra

Date: c. 1887

Medium: porcelain



Title: Candle Lamp

Medium: bronze with art glass



Title: Candlestick

Primary Maker: Unknown

French

Medium: alabaster and bronze
doré



Title: Candlestick

Primary Maker: Unknown

French

Medium: alabaster and bronze
doré



Title: Candlestick

Date: c. 1910

Primary Maker: Gorham
Manufacturing Company

Medium: sterling silver



Title: Candlestick

Date: c. 1910

Primary Maker: Gorham
Manufacturing Company

Medium: sterling silver



Title: Candlestick

Primary Maker: Gorham

Manufacturing Company

Medium: sterling silver



Title: Candlestick

Primary Maker: Gorham

Manufacturing Company

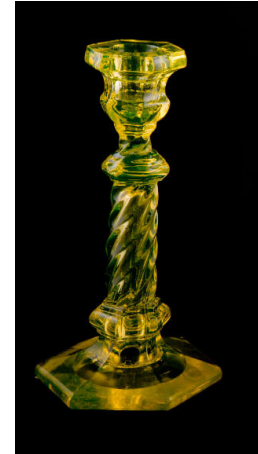
Medium: sterling silver



Title: Candlestick
Date: c. 1850
Primary Maker: Whitefriars
Glass Company
Medium: glass



Title: Candlestick
Date: c. 1850
Primary Maker: Whitefriars
Glass Company
Medium: glass



Title: Candlestick
Primary Maker: Unknown
American
Medium: glass



Title: Candlestick
Primary Maker: Unknown
American
Medium: glass



Title: Candlestick
Date: c. 1900
Medium: cut glass



Title: Candlestick
Medium: cut glass



Title: Candlestick
Medium: cut glass



Title: Candlestick
Medium: glass



Title: Candlestick
Medium: glass



Title: Candlestick
Date: c. 1900
Medium: cut glass



Title: Candlestick
Date: c. 1900
Primary Maker: Unknown
American
Medium: cut glass



Title: Candlestick
Primary Maker: Unknown
American
Medium: cut glass



Title: Candlestick
Date: c. 1920
Primary Maker: Frederick Carder
Medium: engraved glass



Title: Candlestick
Date: c. 1920
Primary Maker: Frederick Carder
Medium: engraved glass



Title: Candlestick
Date: c. 1907
Primary Maker: Schierholz
Porcelain
Medium: porcelain



Title: Candlestick

Date: c. 1907

Primary Maker: Schierholz
Porcelain

Medium: porcelain



Title: Candlestick

Date: c. 1907

Primary Maker: Schierholz
Porcelain

Medium: porcelain



Title: Candlestick

Date: c. 1907

Primary Maker: Schierholz
Porcelain

Medium: porcelain



Title: Candlestick Lid

Primary Maker: Unknown
French

Medium: alabaster and bronze
doré



Title: Candlestick Lid

Primary Maker: Unknown
French

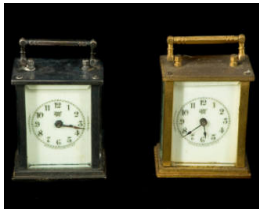
Medium: alabaster and bronze
doré



Title: Carriage Clock

Primary Maker: Waterbury
Clock Company

Medium: metal; porcelain;
glass



Title: Carriage Clock

Primary Maker: Waterbury
Clock Company

Medium: metal; silver



Title: Carved Conch Shell

Medium: conch shell



Title: Carved Conch Shell

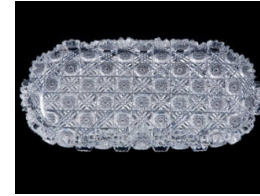
Medium: conch shell



Title: Caster Stand
Primary Maker: Weinranck and Schmidt
Medium: silver



Title: Castle Figurine
Primary Maker: Staffordshire
Medium: earthenware



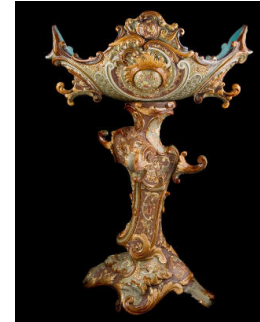
Title: Celery Platter
Date: c. 1903
Primary Maker: T.G. Hawkes & Company
Medium: cut glass



Title: Celery Vase
Primary Maker: Unknown American
Medium: flint glass



Title: Celery Vase
Primary Maker: Unknown American
Medium: glass



Title: Centerpiece
Primary Maker: Wilhelm Schiller
Medium: earthenware glazed Majolica with metal



Title: Centerpiece
Date: c. 1900
Medium: bronze; glass



Title: Champagne Glass
Date: c. 1915
Primary Maker: T.G. Hawkes & Company
Medium: cut glass



Title: Chandelier
Date: 1903-1933
Primary Maker: Quezal Art Glass and Decorating Company
Medium: bronze; glass



Title: Chandelier
Medium: metal; enamel; glass



Title: Chiffonier
Date: c. 1920
Primary Maker: Robert Mitchell Furniture Company
Medium: mahogany with glass and metal



Title: Child's Plate
Primary Maker: Unknown English
Medium: earthenware; black transfer print



Title: Chocolate Cup
Date: 1891 - 1912
Primary Maker: Minton's
Medium: porcelain



Title: Chocolate Cup
Date: 1881 - 1920
Primary Maker: Coalport
Medium: porcelain



Title: Chocolate Cup
Date: after 1912
Primary Maker: Minton's
Medium: porcelain with gold



Title: Chocolate Cup
Primary Maker: Manufacture Nationale de Sèvres
Medium: porcelain



Title: Chocolate Cup Saucer
Date: 1891 - 1912
Primary Maker: Minton's
Medium: porcelain with gold



Title: Chocolate Cup Saucer
Date: 1891 - 1912
Primary Maker: Minton's
Medium: porcelain with gold



Title: Chocolate Pot
Date: 1881 - 1920
Primary Maker: Coalport
Medium: porcelain



Title: Chocolate Pot
Date: 1891 - 1912
Primary Maker: Mintons
Medium: porcelain with gold



Title: Chocolate Pot Lid
Date: 1881 - 1920
Primary Maker: Coalport
Medium: porcelain



Title: Chocolate Pot Lid
Date: 1891 - 1912
Primary Maker: Mintons
Medium: porcelain with gold and metal



Title: The Christ Child
Primary Maker: François Raoul Larche
Medium: cast bronze



Title: Cigar Cutter
Primary Maker: Unknown German
Medium: gilt-brass with diamond



Title: Cigar Humidor
Primary Maker: Pairpoint Manufacturing Company
Medium: cut glass



Title: Cigar Humidor Lid
Primary Maker: Pairpoint Manufacturing Company
Medium: cut glass



Title: Clock
Primary Maker: Unknown German
Medium: enamel; metal



Title: Clothes Brush
Date: c. 1910
Primary Maker: Unger Brothers
Medium: sterling silver with wood



Title: Clothes Brush
Date: c. 1910
Medium: sterling silver



Title: Clothes Brush
Primary Maker: Unknown
Austrian
Medium: bronze doré; enamel



Title: Coffee Cup
Date: 1891 - 1912
Primary Maker: Minton's
Medium: porcelain with gold



Title: Coffee Cup
Primary Maker: Manufacture Nationale de Sèvres
Medium: porcelain



Title: Coffee Cup
Date: 1881 - 1920
Primary Maker: Coalport
Medium: porcelain



Title: Coffee Cup
Primary Maker: Rue Thiroux
Medium: porcelain



Title: Coffee Cup
Primary Maker: Manufacture Nationale de Sèvres
Medium: porcelain



Title: Coffee Cup Saucer
Date: 1891 - 1912
Primary Maker: Minton's
Medium: porcelain with gold



Title: Coffee Cup Saucer
Primary Maker: Rue Thiroux
Medium: porcelain



Title: Coffeepot
Date: c. 1910
Primary Maker: Gorham Manufacturing Company
Medium: sterling silver with ivory



Title: Coffeepot
Date: 1881 - 1920
Primary Maker: Coalport
Medium: porcelain



Title: Coffeepot
Primary Maker: Rue Thiroux
Medium: porcelain



Title: Coffeepot
Primary Maker: Manufacture Nationale de Sèvres
Medium: porcelain



Title: Coffeepot Lid
Primary Maker: Rue Thiroux
Medium: porcelain



Title: Coffeepot Lid
Primary Maker: Manufacture Nationale de Sèvres
Medium: porcelain



Title: Coffeepot Lid
Date: 1881 - 1920
Primary Maker: Coalport
Medium: porcelain



Title: Collar
Date: 18th century
Primary Maker: Unknown
Italian
Medium: linen



Title: Cologne Bottle
Primary Maker: Unknown
American
Medium: pressed glass



Title: Cologne Bottle
Primary Maker: Boston & Sandwich Glass Company
Medium: glass



Title: Cologne Bottle
Date: c. 1900
Medium: glass



Title: Cologne Bottle
Medium: glass



Title: Cologne Bottle Lid
Primary Maker: Boston & Sandwich Glass Company
Medium: glass



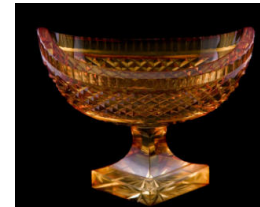
Title: Cologne Bottle Stopper
Date: c. 1900
Medium: glass



Title: Cologne Bottle Stopper
Date: c. 1900
Medium: glass



Title: Compote
Medium: cut glass



Title: Compote
Medium: cut glass



Title: Compote
Medium: cut glass



Title: Compote
Primary Maker: H.P. Sinclair & Company
Medium: cut glass



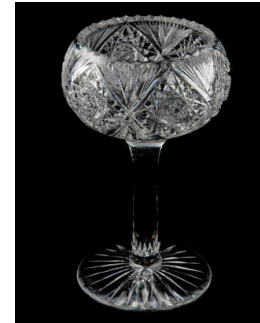
Title: Compote
Primary Maker: H.P. Sinclair & Company
Medium: cut glass



Title: Compote
Date: c. 1900
Primary Maker: Unknown French
Medium: bronze; glass



Title: Compote
Date: c. 1900
Primary Maker: Unknown French
Medium: bronze; glass



Title: Compote
Date: c. 1900
Primary Maker: Pairpoint Manufacturing Company
Medium: cut glass



Title: Compote
Date: c. 1900
Primary Maker: T.G. Hawkes & Company
Medium: cut glass



Title: Compote
Date: c. 1900
Primary Maker: T.G. Hawkes & Company
Medium: cut glass



Title: Compote
Primary Maker: Unknown American
Medium: flint glass



Title: Compote
Primary Maker: Unknown
American
Medium: pressed glass



Title: Compote
Primary Maker: Unknown
American
Medium: pressed glass



Title: Compote
Primary Maker: Unknown
American
Medium: pressed glass



Title: Compote
Primary Maker: Unknown
American
Medium: pressed glass



Title: Compote
Primary Maker: Unknown
American
Medium: pressed glass



Title: Compote
Date: c. 1920
Primary Maker: Frederick Carder
Medium: engraved glass



Title: Compote
Date: 1753
Primary Maker: Manufacture Nationale de Sèvres
Medium: porcelain with bronze



Title: Compote
Date: after 1903
Primary Maker: T.G. Hawkes & Company
Medium: cut glass



Title: Compote
Date: after 1903
Primary Maker: T.G. Hawkes & Company
Medium: cut glass



Title: Compote
Date: c. 1891
Primary Maker: Schierholz
Porcelain
Medium: porcelain



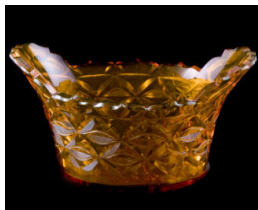
Title: Compote
Date: c. 1900
Medium: porcelain



Title: Compote Lid
Medium: cut glass



Title: Compote Lid
Medium: cut glass



Title: Console Bowl
Medium: cut glass



Title: Cottage Figurine
Date: c. 1924
Primary Maker: Chelsea
Porcelain Manufactory
Medium: earthenware



Title: Covered Bowl
Date: 1881 - 1920
Primary Maker: Coalport
Medium: porcelain



Title: Covered Bowl
Date: before 1926
Medium: porcelain and bronze with enamel



Title: Covered Bowl
Primary Maker: Vallerysthal
Medium: milk glass



Title: Covered Bowl
Primary Maker: Vallerysthal
Medium: milk glass



Title: Covered Dish
Date: c. 1898
Primary Maker: Unknown American
Medium: glass



Title: Covered Dish
Medium: milk glass



Title: Covered Dish
Medium: milk glass



Title: Covered Dish
Medium: milk glass



Title: Covered Serving Bowl
Date: 1881 - 1920
Primary Maker: Coalport
Medium: porcelain



Title: Covered Serving Bowl
Date: 1881 - 1920
Primary Maker: Coalport
Medium: porcelain



Title: Covered Urn
Date: c.1821
Primary Maker: Manufacture Nationale de Sèvres
Medium: porcelain; bronze



Title: Covered Urn
Date: c. 1891
Medium: porcelain; bronze



Title: Creamer
Date: c. 1910
Primary Maker: Gorham Manufacturing Company
Medium: sterling silver with gold wash



Title: Creamer
Date: 1891 - 1912
Primary Maker: Mintons
Medium: porcelain with gold



Title: Creamer
Date: after 1912
Primary Maker: Mintons
Medium: porcelain with gold



Title: Creamer
Primary Maker: Unknown American
Medium: pressed glass



Title: Creamer
Primary Maker: Unknown American
Medium: pressed glass



Title: Creamer
Primary Maker: Unknown American
Medium: pressed glass



Title: Creamer
Primary Maker: Unknown
American
Medium: flint glass



Title: Creamer
Primary Maker: Unknown
American
Medium: pressed glass



Title: Creamer
Primary Maker: Unknown
American
Medium: pressed glass



Title: Creamer
Primary Maker: Unknown
American
Medium: pressed glass



Title: Creamer
Date: 1881 - 1920
Primary Maker: Coalport
Medium: porcelain



Title: Creamer
Primary Maker: Rue Thiroux
Medium: porcelain



Title: Creamer
Primary Maker: Rue Thiroux
Medium: porcelain



Title: Creamer
Primary Maker: Manufacture
Nationale de Sèvres
Medium: porcelain



Title: Creamer
Primary Maker: Manufacture
Nationale de Sèvres
Medium: porcelain



Title: Creamer Lid
Primary Maker: Rue Thiroux
Medium: porcelain



Title: Creamer Lid
Primary Maker: Rue Thiroux
Medium: porcelain



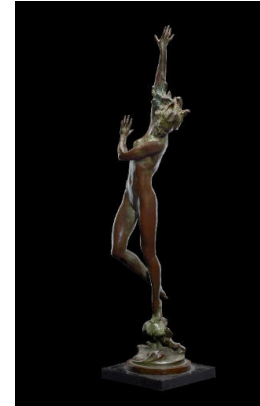
Title: Cream Pitcher
Date: 1891 - 1912
Primary Maker: Mintons
Medium: porcelain with gold



Title: Cream Pitcher
Date: after 1912
Primary Maker: Mintons
Medium: porcelain with gold



Title: Cream Pitcher
Date: 1891 - 1912
Primary Maker: Mintons
Medium: porcelain with gold



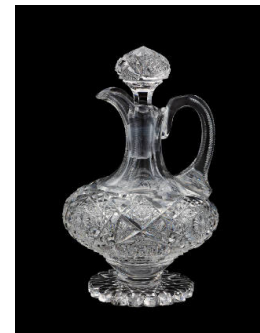
Title: Crest of the Wave
Date: 1925
Primary Maker: Harriet Whitney Frishmuth
Medium: cast bronze



Title: Cruet
Date: c. 1905
Primary Maker: T.G. Hawkes & Company
Medium: cut glass



Title: Cruet
Medium: milk glass

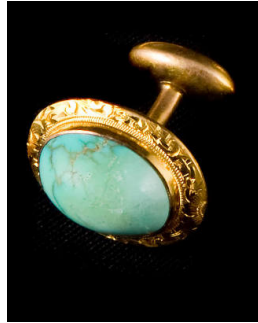


Title: Cruet Stopper
Date: c. 1905
Primary Maker: T.G. Hawkes & Company
Medium: cut glass



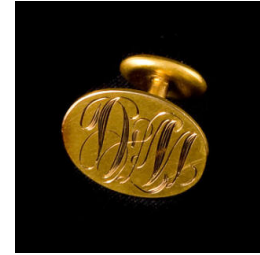
Title: Cuff Link

Medium: platinum with ruby and diamonds



Title: Cuff Link

Medium: gold and turquoise



Title: Cuff Link

Medium: gold (14K)



Title: Cuff Link

Medium: gold and turquoise



Title: Cuff Link

Medium: platinum with ruby and diamonds



Title: Cuff Link

Medium: gold (14K)



Title: Cup

Date: 1843 - 1855

Primary Maker: Staffordshire

Medium: ironstone with flow blue transfer print



Title: Cup

Date: 1881 - 1920

Primary Maker: Coalport

Medium: porcelain



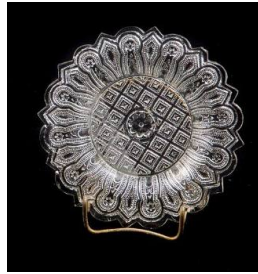
Title: Cup

Primary Maker: Staffordshire

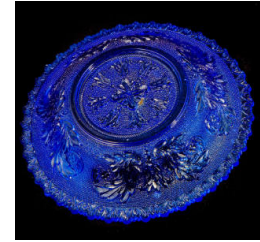
Medium: earthenware with red transfer print



Title: Cup Plate
Date: 1881 - 1920
Primary Maker: Coalport
Medium: porcelain



Title: Cup Plate
Primary Maker: Unknown
American
Medium: glass



Title: Cup Plate
Primary Maker: Unknown
American
Medium: flint glass



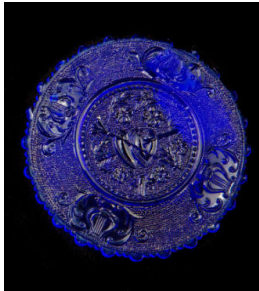
Title: Cup Plate
Primary Maker: Unknown
American
Medium: flint glass



Title: Cup Plate
Primary Maker: Unknown
American
Medium: flint glass



Title: Cup Plate
Primary Maker: Unknown
American
Medium: flint glass



Title: Cup Plate
Primary Maker: Unknown
American
Medium: flint glass



Title: Cup Plate
Primary Maker: Unknown
American
Medium: flint glass



Title: Cup Plate
Primary Maker: Unknown
American
Medium: glass



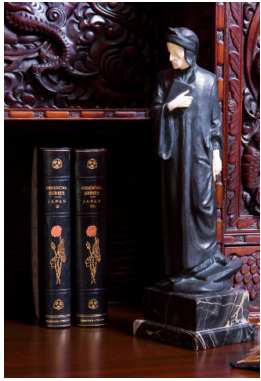
Title: Cup Plate
Primary Maker: Unknown
American
Medium: flint glass



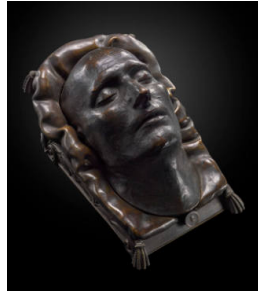
Title: Cup Plate
Primary Maker: Unknown
American
Medium: flint glass



Title: Cuticle Knife
Date: c. 1910
Primary Maker: Unger
Brothers
Medium: sterling silver with
steel



Title: Dante
Medium: bronze; ivory; marble



Title: Death Mask of Napoleon
Date: 1833
Primary Maker: Dr. François Carlo Antommarchi
Medium: cast bronze



Title: Decanter
Primary Maker: Weinranck and Schmidt
Medium: glass and sterling silver



Title: Decanter
Primary Maker: Weinranck and Schmidt
Medium: glass and sterling silver



Title: Decanter
Date: 1840-1850
Medium: glass



Title: Decanter Stopper
Primary Maker: Weinranck and Schmidt
Medium: glass and sterling silver



Title: Decorative Plate
Medium: porcelain



Title: Decorative Plate
Date: 1867
Primary Maker: Manufacture
Nationale de Sèvres
Medium: porcelain



Title: Decorative Plate
Date: 1867
Primary Maker: Manufacture
Nationale de Sèvres
Medium: porcelain



Title: Demitasse Cup
Date: 1891 - 1912
Primary Maker: Mintons
Medium: porcelain with gold



Title: Demitasse Cup
Date: 1881 - 1920
Primary Maker: Coalport
Medium: porcelain



Title: Demitasse Cup
Primary Maker: Manufacture
Nationale de Sèvres
Medium: porcelain



**Title: Demitasse Cup
Saucer**
Date: 1891 - 1912
Primary Maker: Mintons
Medium: porcelain with gold



Title: Demitasse Saucer
Primary Maker: Manufacture
Nationale de Sèvres
Medium: porcelain



Title: Demitasse Saucer
Primary Maker: Manufacture
Nationale de Sèvres
Medium: porcelain



Title: Demitasse Saucer
Primary Maker: Manufacture Nationale de Sèvres
Medium: porcelain



Title: Desk
Date: c. 1900
Medium: mahogany with brass



Title: Desk Calendar
Date: c. 1898-1906
Primary Maker: Tiffany Studios
Medium: bronze with favrile glass



Title: Desk Calendar
Date: c. 1900
Primary Maker: Louis Comfort Tiffany
Medium: brass with abalone shell and glass



Title: Dessert Bowl
Date: 1881 - 1920
Primary Maker: Coalport
Medium: porcelain



Title: Dessert Bowl
Date: c. 1920
Primary Maker: Frederick Carder
Medium: engraved glass



Title: Dessert Cup
Date: 1881 - 1920
Primary Maker: Coalport
Medium: porcelain



Title: Dining Room Armchair
Date: c.1900
Medium: mahogany with metal and silk with burlap, linen and horse hair



Title: Dining Room Armchair
Date: c. 1900
Medium: mahogany with metal and silk with burlap, linen and horse hair



Title: Dining Room Side Chair
Date: c.1900
Medium: mahogany with metal and silk with burlap, linen and horse hair



Title: Dining Room Side Chair
Date: c.1900
Medium: mahogany with metal and silk with burlap, linen and horse hair



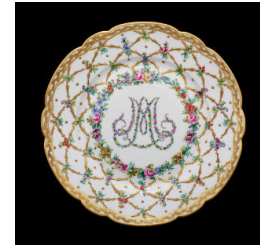
Title: Dinner Plate
Date: 1881 - 1920
Primary Maker: Coalport
Medium: porcelain



Title: Dinner Plate
Date: after 1912
Primary Maker: Mintons
Medium: porcelain with gold



Title: Dinner Plate
Primary Maker: Rue Thiroux
Medium: porcelain



Title: Dinner Plate
Primary Maker: Manufacture Nationale de Sèvres
Medium: porcelain



Title: Dish
Medium: milk glass



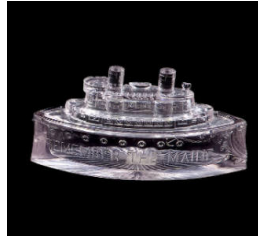
Title: Dish
Medium: milk glass



Title: Dish
Medium: milk glass



Title: Dish
Medium: milk glass



Title: Dish Cover
Date: c. 1898
Primary Maker: Unknown
American
Medium: glass



Title: Dish Lid
Medium: milk glass



Title: Dish Lid
Medium: milk glass



Title: Dish Lid
Medium: milk glass



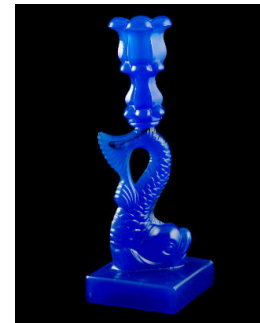
Title: Dish Lid
Medium: milk glass



Title: Dish Lid
Medium: milk glass



Title: Dish Lid
Medium: milk glass



**Title: Dolphin
Candlestick**
Primary Maker: Unknown
American
Medium: glass



Title: Dolphin Candlestick
Primary Maker: Unknown American
Medium: glass



Title: Dolphin Candlestick
Primary Maker: Unknown American
Medium: glass



Title: Dress
Date: c. 1930
Medium: velvet; silk; net; metal; rhinestones



Title: Dress
Date: c. 1881
Medium: crochet lace with net and metal



Title: Dress
Date: c. 1900
Primary Maker: Unknown French
Medium: lace and silk with faux pearls and metal



Title: Dresser
Date: c. 1920
Primary Maker: Robert Mitchell Furniture Company
Medium: mahogany with metal and glass



Title: Dresser
Date: c. 1870
Primary Maker: Unknown
American
Medium: walnut with poplar,
marble, brass, and glass



Title: Dressing Table
Date: c. 1920
Primary Maker: Robert
Mitchell Furniture Company
Medium: mahogany with glass
and metal



Title: Drinking Glass
Date: 1905
Primary Maker: T.G. Hawkes
& Company
Medium: engraved glass



Title: Drinking Glass
Date: 1905
Primary Maker: T.G. Hawkes
& Company
Medium: engraved glass



Title: Drinking Glass
Date: 1905
Primary Maker: T.G. Hawkes
& Company
Medium: engraved glass



Title: Drinking Glass
Date: 1905
Primary Maker: T.G. Hawkes
& Company
Medium: engraved glass



Title: Drinking Glass
Date: 1905
Primary Maker: T.G. Hawkes
& Company
Medium: engraved glass



Title: Drinking Glass
Date: 1905
Primary Maker: T.G. Hawkes
& Company
Medium: engraved glass



Title: Drinking Glass
Date: 1905
Primary Maker: T.G. Hawkes
& Company
Medium: engraved glass



Title: Eggcup
Date: 1881 - 1920
Primary Maker: Coalport
Medium: porcelain



Title: Eggcup
Primary Maker: Unknown
American
Medium: flint glass



Title: Electric Lamp
Date: c. 1900
Primary Maker: Karl Max
Seifert Lamp Factory
Medium: 7bronz with metal
and glass



**Title: Embroidery
Scissors**
Date: c. 1900
Medium: metal



Title: Enamel Earrings
Medium: gold with diamonds
and enamel



Title: Enamel Earrings
Medium: gold with diamonds
and enamel



Title: Enameled Box
Primary Maker: Unknown
French
Medium: porcelain; enamel;
metal



Title: End Table
Date: c. 1900
Primary Maker: Unknown
French
Medium: wood and ebony with
brass and porcelain



Title: Epergne Base
Date: c. 1900
Medium: cut glass



Title: Epergne Bowl
Date: c. 1900
Medium: cut glass with sterling silver



Title: Epergne Stand
Date: after 1903
Primary Maker: T.G. Hawkes & Company
Medium: cut glass



Title: Epergne Stand
Date: after 1903
Primary Maker: T.G. Hawkes & Company
Medium: cut glass



Title: Epergne Vase
Date: c. 1900
Medium: cut glass



Title: Fall-Front Desk
Date: c. 1900
Primary Maker: Unknown American
Medium: mahogany



Title: Fall-Front Desk
Date: c. 1920
Primary Maker: Robert Mitchell Furniture Company
Medium: mahogany with glass and metal



Title: Fan Vase
Date: 1880-1917
Primary Maker: T.G. Hawkes & Company
Medium: cut glass



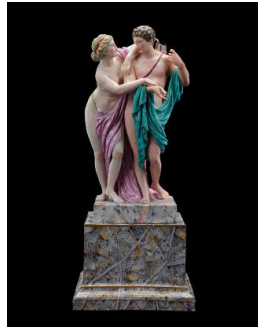
Title: Ferner
Date: c. 1900
Primary Maker: T.G. Hawkes & Company
Medium: cut glass



Title: Fiftieth Anniversary Guest Book
Date: 1931
Medium: paper and fabric



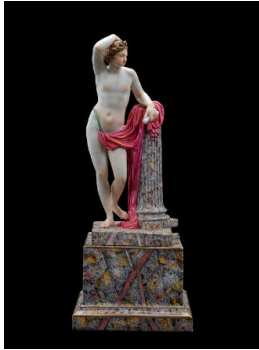
Title: Figurine
Date: before 1926
Primary Maker: Unknown
German
Medium: porcelain



Title: Figurine
Date: 1774-1814
Primary Maker: Meissen
Medium: porcelain



Title: Figurine
Date: 1774-1814
Primary Maker: Meissen
Medium: porcelain



Title: Figurine
Date: 1774-1814
Primary Maker: Meissen
Medium: porcelain



Title: Figurine
Date: 1815 - 1924
Primary Maker: Meissen
Medium: porcelain



Title: Figurine
Date: c. 1814
Primary Maker: Meissen
Medium: biscuit porcelain



Title: Figurine
Date: c. 1814
Primary Maker: Meissen
Medium: biscuit porcelain



Title: Figurine
Date: c. 1814
Primary Maker: Meissen
Medium: biscuit porcelain



Title: Figurine
Date: c. 1814
Primary Maker: Meissen
Medium: biscuit porcelain



Title: Figurine
Date: early 19th Century
Primary Maker: Staffordshire
Medium: earthenware



Title: Figurine
Date: early 19th Century
Primary Maker: Staffordshire
Medium: earthenware



Title: Figurine
Date: 1891
Primary Maker: Unknown
German
Medium: porcelain



Title: Figurine
Date: 1891
Primary Maker: Unknown
German
Medium: porcelain



Title: Figurine
Primary Maker: Royal
Worcester Porcelain Company
Medium: earthenware



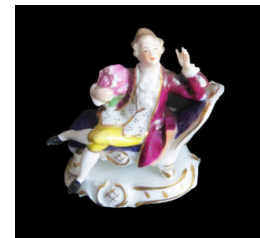
Title: Figurine
Date: c. 1900
Primary Maker: Saxon
Porcelain Manufactory
Medium: porcelain



Title: Figurine
Date: c. 1891
Primary Maker: Saxon
Porcelain Manufactory
Medium: porcelain



Title: Figurine
Primary Maker: Dresden
Medium: porcelain



Title: Figurine
Primary Maker: Dresden
Medium: porcelain



Title: Figurine
Date: early 20th Century
Medium: porcelain



Title: Figurine
Date: early 20th Century
Medium: porcelain



Title: Figurine Pedestal
Stand
Date: 1773-1814
Primary Maker: Meissen
Medium: porcelain



Title: Figurine Pedestal
Stand
Date: 1773-1814
Primary Maker: Meissen
Medium: porcelain



Title: Figurine Pedestal
Stand
Date: 1773-1814
Primary Maker: Meissen
Medium: porcelain



Title: Figurine Pedestal
Stand
Date: 1773-1814
Primary Maker: Meissen
Medium: porcelain



Title: Finger Bowl
Date: c. 1915
Primary Maker: T.G. Hawkes
& Company
Medium: cut glass



Title: Finger Bowl
Date: c. 1915
Primary Maker: T.G. Hawkes
& Company
Medium: cut glass



Title: Finger Bowl
Date: c. 1915
Primary Maker: T.G. Hawkes
& Company
Medium: cut glass



Title: Finger Bowl
Date: c. 1915
Primary Maker: T.G. Hawkes
& Company
Medium: cut glass



Title: Finger Bowl
Date: c. 1915
Primary Maker: T.G. Hawkes
& Company
Medium: cut glass



Title: Finger Bowl
Date: c. 1915
Primary Maker: T.G. Hawkes
& Company
Medium: cut glass



Title: Finger Bowl
Date: c. 1915
Primary Maker: T.G. Hawkes
& Company
Medium: cut glass



Title: Finger Bowl
Date: c. 1915
Primary Maker: T.G. Hawkes
& Company
Medium: cut glass



Title: Finger Bowl
Primary Maker: Unknown
American
Medium: pressed glass



Title: Finger Bowl
Primary Maker: Unknown
American
Medium: pressed glass



Title: Finger Bowl
Primary Maker: Unknown
American
Medium: pressed glass



Title: Flask
Primary Maker: Unknown
American
Medium: flint glass



Title: Flask
Primary Maker: Unknown
American
Medium: flint glass



Title: Flask
Primary Maker: Unknown
American
Medium: flint glass



Title: Flip Glass
Medium: glass



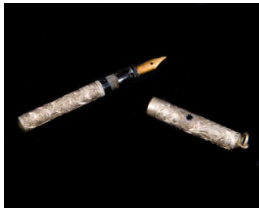
Title: Flounce
Date: 18th Century
Primary Maker: Unknown
Flemish
Medium: lace



Title: Footstool
Date: c. 1850
Primary Maker: Unknown
American
Medium: walnut with velvet
and brass



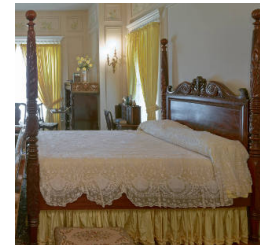
Title: Foot Stool
Date: c. 1920
Medium: mahogany with
brocade and metal



Title: Fountain Pen
Medium: sterling silver



Title: Fountain Pen Lid
Medium: sterling silver



Title: Four Poster Bed
Date: c. 1920
Primary Maker: Robert
Mitchell Furniture Company
Medium: mahogany with pine
and metal



Title: Frances Ann Lutcher
Date: c. 1910
Primary Maker: August Benziger
Medium: oil on canvas



Title: Fruit Bowl
Date: 1891 - 1912
Primary Maker: Mintons
Medium: porcelain with gold



Title: Fruit Bowl
Date: c. 1841
Primary Maker: Staffordshire
Medium: earthenware; brown transfer print



Title: Fruit Bowl
Date: c. 1900
Primary Maker: Pairpoint Manufacturing Company
Medium: cut glass



Title: Fruit Bowl
Date: c. 1908
Primary Maker: Pairpoint Manufacturing Company
Medium: cut glass



Title: Fruit Bowl
Primary Maker: Unknown American
Medium: pressed glass



Title: Fruit Bowl
Primary Maker: Unknown American
Medium: pressed glass



Title: Fruit Bowl
Primary Maker: Unknown American
Medium: pressed glass



Title: Fruit Bowl
Primary Maker: Unknown American
Medium: pressed glass



Title: Fruit Bowl
Date: c. 1920
Primary Maker: Frederick Carder
Medium: engraved glass



Title: Fruit Bowl
Date: c. 1840
Primary Maker: Podmore, Walker & Company
Medium: pearlstone; purple transfer print



Title: Fruit Bowl
Date: after 1903
Primary Maker: T.G. Hawkes & Company
Medium: cut glass



Title: Fruit Cup
Date: 1881 - 1920
Primary Maker: Coalport
Medium: porcelain



Title: George Washington Plate
Primary Maker: Unknown American
Medium: flint glass



Title: Glass
Date: c. 1920
Primary Maker: Frederick Carder
Medium: engraved glass



Title: Glove Box

Date: 1880-1917

Primary Maker: Pairpoint
Manufacturing Company

Medium: cut glass with silver
plate



Title: Glove Stretcher

Date: c. 1910

Primary Maker: Unger
Brothers

Medium: sterling silver



Title: Goblet

Date: c. 1915

Primary Maker: T.G. Hawkes
& Company

Medium: cut glass



Title: Goblet

Date: c. 1915

Primary Maker: T.G. Hawkes
& Company

Medium: cut glass



Title: Goblet

Primary Maker: Unknown
American

Medium: pressed glass



Title: Goblet

Primary Maker: Unknown
American

Medium: pressed glass



Title: Goblet
Primary Maker: Unknown
American
Medium: flint glass



Title: Goblet
Primary Maker: Unknown
American
Medium: glass



Title: Goblet
Primary Maker: Unknown
American
Medium: glass



Title: Goblet
Medium: earthenware with
lustre



Title: Goblet
Date: c. 1920
Primary Maker: Frederick
Carder
Medium: engraved glass



Title: Grand Piano
Date: November 12, 1910
Primary Maker: Steinway &
Sons
Medium: mahogany with ivory,
metal, and string



Title: Hairbrush
Date: c. 1910
Primary Maker: Unger Brothers
Medium: sterling silver with wood



Title: Hairbrush
Primary Maker: Unknown
Austrian
Medium: bronze doré; enamel



Title: Hair Piece
Primary Maker: Unknown
French
Medium: lace



Title: Hair Receiver
Medium: milk glass



Title: Handled Soup Cup
Date: 1881 - 1920
Primary Maker: Coalport
Medium: porcelain



Title: Handled Tea Mug
Date: c. 1900
Primary Maker: H.P. Sinclair & Company
Medium: cut glass



Title: Handled Tea Mug
Date: c. 1900
Primary Maker: H.P. Sinclair & Company
Medium: cut glass



Title: Handled Tea Mug
Date: c. 1900
Primary Maker: H.P. Sinclair & Company
Medium: cut glass



Title: Handled Tea Mug
Date: c. 1900
Primary Maker: H.P. Sinclair & Company
Medium: cut glass



Title: Hand Mirror
Date: c. 1910
Primary Maker: Unger Brothers
Medium: sterling silver with glass



Title: Hand Mirror
Primary Maker: Unknown Austrian
Medium: bronze doré; enamel; glass



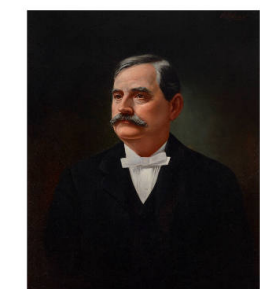
Title: Hanging Planter
Date: c. 1910
Medium: cut glass; silver



Title: Harmony of Waves
Medium: cast bronze



Title: Henry IV Enfant (Copy)
Medium: cast bronze



Title: Henry Jacob Lutcher
Date: c. 1890
Primary Maker: Andres Molinary
Medium: oil on canvas



Title: Honey Dish
Primary Maker: Unknown
American
Medium: glass



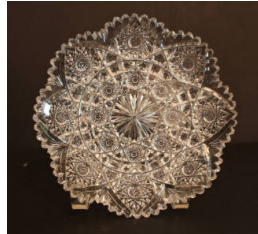
Title: Hunt Scene Pitcher
Medium: earthenware



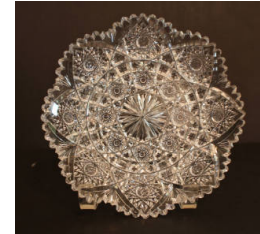
Title: Ice Bowl
Date: c. 1900
Primary Maker: J. Hoare & Company
Medium: cut glass



Title: Ice Bucket
Date: after 1903
Primary Maker: T.G. Hawkes & Company
Medium: cut glass



Title: Ice Cream Plate
Date: c.1900
Primary Maker: Pairpoint Manufacturing Company
Medium: cut glass



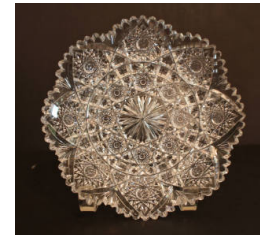
Title: Ice Cream Plate
Date: c.1900
Primary Maker: Pairpoint Manufacturing Company
Medium: cut glass



Title: Ice Cream Plate
Date: c.1900
Primary Maker: Pairpoint Manufacturing Company
Medium: cut glass



Title: Ice Cream Plate
Date: c.1900
Primary Maker: Pairpoint Manufacturing Company
Medium: cut glass



Title: Ice Cream Plate
Date: c.1900
Primary Maker: Pairpoint Manufacturing Company
Medium: cut glass



Title: Ice Cream Plate
Date: c.1900
Primary Maker: Pairpoint Manufacturing Company
Medium: cut glass



Title: Ice Cream Plate
Date: c.1900
Primary Maker: Pairpoint Manufacturing Company
Medium: cut glass



Title: Ice Cream Tray
Date: c. 1900
Primary Maker: Pairpoint Manufacturing Company
Medium: cut glass



Title: Ice Tea Glass
Date: c. 1920
Primary Maker: Frederick Carder
Medium: engraved glass



Title: Incense Burner
Date: 18th Century
Primary Maker: Unknown Chinese
Medium: cast bronze



Title: Incense Burner
Primary Maker: Satsuma
Medium: porcelain; enamel



Title: Incense Burner
Date: 1806-1825
Medium: porcelain; metal



Title: Incense Burner Lid
Primary Maker: Satsuma
Medium: metal; enamel



Title: Inkwell
Medium: bronze with art glass



Title: Inkwell
Medium: porcelain



Title: Inkwell
Date: c. 1898-1906
Primary Maker: Tiffany Studios
Medium: bronze with favrile glass



Title: Inkwell
Date: c. 1900
Primary Maker: Louis Comfort Tiffany
Medium: brass with abalone shell



Title: Inkwell
Primary Maker: Tiffany Studios
Medium: bronze; glass



Title: Inkwell
Primary Maker: Unknown
Medium: glass



Title: Jabot
Date: 17th Century
Primary Maker: Unknown
Medium: gros point lace with fabric backing



Title: Jabot
Date: 18th Century
Primary Maker: Unknown
Medium: lace; fabric



Title: Jam Jar
Date: 1876
Primary Maker: Unknown
Medium: glass



Title: Jam Jar Lid
Date: 1876
Primary Maker: Unknown
Medium: glass



Title: Jar
Primary Maker: Weinranck and Schmidt
Medium: glass



Title: Jardinière
Primary Maker: Unknown
Chinese
Medium: porcelain



Title: John Milton
Medium: cast bronze



Title: John the Baptist Religious Plaque
Date: c. 1490
Primary Maker: Unknown
Italian
Medium: carved ivory applied to velvet



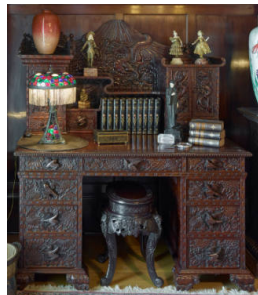
Title: Katharina v. Medici Vase
Date: c. 1891
Primary Maker: Unknown
German
Medium: porcelain; enamel



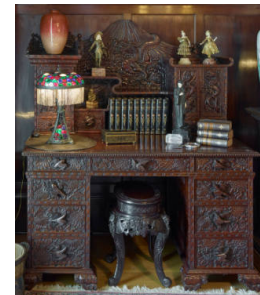
Title: Kettle
Date: c. 1910
Primary Maker: Gorham Manufacturing Company
Medium: sterling silver with ivory



Title: Kettle Stand
Date: c. 1910
Primary Maker: Gorham Manufacturing Company
Medium: sterling silver



Title: Kneehole Desk
Date: c.1900
Primary Maker: Unknown
Chinese
Medium: mahogany



Title: Kneehole Desk
Date: c.1900
Primary Maker: Unknown
Chinese
Medium: mahogany



Title: Lace
Primary Maker: Unknown
Belgian
Medium: cotton or linen



Title: Lace Insert
Date: early 1900
Primary Maker: Unknown
Belgian
Medium: cotton or linen



Title: Lace Strip
Date: early 17th century
Primary Maker: Unknown
Spanish
Medium: gros point lace with
velvet backing



Title: Lady in the Waves
Statue
Medium: marble



Title: Lamp Shade
Medium: metal and glass



Title: Lappet
Date: 1700-1799
Primary Maker: Unknown
French
Medium: lace



Title: Lappet
Date: 18th century
Primary Maker: Unknown
French
Medium: lace; silk



Title: Lemonade Set Pitcher
Date: c. 1900
Primary Maker: Pairpoint Manufacturing Company
Medium: cut glass



Title: Lemonade Set Tumbler
Date: c. 1900
Primary Maker: Pairpoint Manufacturing Company
Medium: cut glass



Title: Lemonade Set Tumbler
Date: c. 1900
Primary Maker: Pairpoint Manufacturing Company
Medium: cut glass



Title: Lemonade Set Tumbler
Date: c. 1900
Primary Maker: Pairpoint Manufacturing Company
Medium: cut glass



Title: Lemonade Set Tumbler
Date: c. 1900
Primary Maker: Pairpoint Manufacturing Company
Medium: cut glass



Title: Lemonade Set Tumbler
Date: c. 1900
Primary Maker: Pairpoint Manufacturing Company
Medium: cut glass



Title: Lemonade Set Tumbler
Date: c. 1900
Primary Maker: Pairpoint Manufacturing Company
Medium: cut glass



Title: Lemonade Set Tumbler
Date: c. 1900
Primary Maker: Pairpoint Manufacturing Company
Medium: cut glass



Title: Lemonade Set Tumbler
Date: c. 1900
Primary Maker: Pairpoint Manufacturing Company
Medium: cut glass



Title: Lemonade Set Tumbler
Date: c. 1900
Primary Maker: Pairpoint Manufacturing Company
Medium: cut glass



Title: Lemonade Set Tumbler
Date: c. 1900
Primary Maker: Pairpoint Manufacturing Company
Medium: cut glass



Title: Lemonade Set Tumbler
Date: c. 1900
Primary Maker: Pairpoint Manufacturing Company
Medium: cut glass



Title: Lemonade Set Tumbler
Date: c. 1900
Primary Maker: Pairpoint Manufacturing Company
Medium: cut glass



Title: Lemon Plate
Medium: cut glass



Title: Lemon Plate Handle
Primary Maker: Gorham Manufacturing Company
Medium: sterling silver



Title: Lemon Tray
Date: c. 1910
Primary Maker: Gorham Manufacturing Company
Medium: sterling silver



Title: Letter Holder
Date: c. 1898-1906
Primary Maker: Tiffany Studios
Medium: bronze with favrile glass



Title: Letter Holder
Date: c. 1898-1906
Primary Maker: Tiffany Studios
Medium: bronze with favrile glass



Title: Letter Opener
Medium: bronze with art glass



Title: Letter Opener
Date: c. 1898-1906
Primary Maker: Tiffany Studios
Medium: bronze with favrile glass



Title: Letter Opener
Date: c. 1900
Primary Maker: Louis Comfort Tiffany
Medium: brass with abalone shell



Title: Lid
Primary Maker: Weinranck and Schmidt
Medium: sterling silver



Title: Lingerie Pin
Medium: gold



Title: Lingerie Pin
Medium: gold



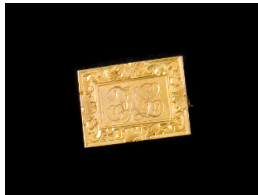
Title: Lingerie Pin
Medium: gold



Title: Lingerie Pin
Medium: gold



Title: Lingerie Pin
Medium: gold



Title: Lingerie Pin
Medium: gold



Title: Locket
Medium: glass and metal with rhinestone



Title: Locket
Medium: gold and metal with glass



Title: Locket
Medium: gold, metal, and glass with diamond



Title: Locket
Medium: gold, metal, and glass with diamond



Title: Loving Cup
Date: 1906
Primary Maker: Gorham Manufacturing Company
Medium: sterling silver



Title: Loving Cup
Date: 1921
Primary Maker: Wallace Silversmiths
Medium: sterling silver



Title: Luster
Medium: glass; metal



Title: Madonna of the Chair
Date: late 19th Century
Primary Maker: Giovanni Estienne
Medium: oil on canvas in wood frame



Title: Mantel Clock
Primary Maker: Unknown English
Medium: bronze and glass



Title: Mantle Clock
Date: c. 1889-1900
Medium: iron; bronze; porcelain; glass



Title: Mantle Clock
Primary Maker: Unknown French
Medium: alabaster and bronze doré with glass and porcelain



Title: Mantle Clock
Date: 1903
Primary Maker: Unknown French
Medium: porcelain and metal



Title: Mantle Clock
Date: c. 1900
Primary Maker: Dresden
Medium: porcelain with glass and brass



Title: Master Saltcellar
Medium: cut glass



Title: Match Holder
Primary Maker: Unknown
American
Medium: pressed glass



Title: Match Safe
Primary Maker: Unknown
German
Medium: gilt-brass with diamond



Title: Meat Platter
Primary Maker: Gorham
Manufacturing Company
Medium: sterling silver



Title: Melon Platter
Date: after 1903
Primary Maker: T.G. Hawkes
& Company
Medium: cut glass



Title: Milk Pitcher
Date: 1891 - 1912
Primary Maker: Mintons
Medium: porcelain with gold



Title: Milk Pitcher
Date: after 1912
Primary Maker: Mintons
Medium: porcelain with gold



Title: Milk Pitcher
Date: 1881 - 1920
Primary Maker: Coalport
Medium: porcelain



Title: Miniature Bottle
Primary Maker: Unknown
American
Medium: flint glass



Title: Miniature Clock
Primary Maker: Unknown
French
Medium: metal; enamel; glass



Title: Miniature Clock Figurine
Medium: porcelain; metal



Title: Miniature Cup
Date: 1881 - 1920
Primary Maker: Coalport
Medium: porcelain



Title: Miniature Horn of Plenty Vase
Medium: pressed glass



Title: Miniature of Frances Ann Lutch Stark
Medium: possibly on ivory



Title: Miniature Teapot
Primary Maker: Satsuma
Medium: porcelain with enamel and bamboo and metal



Title: Miniature Teapot Lid
Primary Maker: Satsuma
Medium: porcelain with enamel



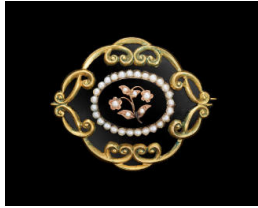
Title: Miriam Melissa Lutch Stark
Date: 1926
Primary Maker: Nicholas Richard Brewer
Medium: oil on canvas



Title: Model T Roadster
Date: 1922
Primary Maker: Ford Motor Company
Medium: assembled metal



Title: Money Clip
Medium: gold (14K)



Title: Mourning Jewelry Brooch
Medium: enamel and metal



Title: Mourning Jewelry Brooch
Medium: gold and enamel



Title: Mourning Jewelry Brooch
Medium: gold and enamel with pearl



Title: Mourning Jewelry Pendant
Medium: glass and metal with seed pearls



Title: Mug
Primary Maker: Unknown American
Medium: pressed glass



Title: Music Room Ceiling Mural
Primary Maker: Ernest Theodore Behr
Medium: oil on canvas



Title: Mustard Pot
Primary Maker: Unknown American
Medium: pressed glass



Title: Mustard Pot
Primary Maker: Unknown American
Medium: pressed glass



Title: Nail Buffer

Date: 1920

Medium: sterling silver with
chamois



Title: Nail File

Date: c. 1910

Primary Maker: Unger
Brothers

Medium: sterling silver with
steel



**Title: Napoleon's Retreat
from Russia**

Primary Maker: Antonio
Vanetti

Medium: cast bronze with
white marble base



Title: Needle Case

Date: c. 1900

Medium: metal



Title: Needle Case Lid

Date: c. 1900

Medium: metal



Title: Notepad Holder

Date: c. 1898-1906

Primary Maker: Tiffany Studios

Medium: bronze with favrile glass and wood



Title: Novelty Lamp

Medium: brass; porcelain



Title: Nut Dish

Date: 1881 - 1920

Primary Maker: Coalport

Medium: porcelain



Title: Oil Lamp Base

Primary Maker: Unknown
American

Medium: blown and pressed glass with brass



Title: Oil Lamp Base

Primary Maker: Unknown
American

Medium: blown and pressed glass; metal



Title: Oil Lamp Base

Primary Maker: Unknown
American

Medium: blown and pressed glass with metal



Title: Oil Lamp Base

Primary Maker: Unknown
American

Medium: blown and pressed glass with metal



Title: Oil Lamp Base
Primary Maker: Unknown
American
Medium: blown and pressed glass with metal and marble



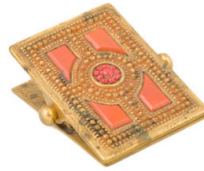
Title: Oil Lamp Base
Primary Maker: Unknown
American
Medium: blown and pressed glass; marble; metal



Title: Oil Lamp Base
Primary Maker: Unknown
American
Medium: blown and pressed glass



Title: Orange Bowl
Date: c. 1900
Primary Maker: Pairpoint Manufacturing Company
Medium: cut glass



Title: Paper Clip
Date: c. 1898-1906
Primary Maker: Tiffany Studios
Medium: bronze with favrile glass



Title: Paper Spindle
Medium: bronze with art glass



Title: Paperweight
Date: c. 1850
Medium: glass



Title: Paperweight
Date: c. 1850
Medium: glass



Title: Paperweight
Date: c. 1850
Medium: glass



Title: Paperweight

Date: c. 1925

Medium: glass



Title: Paperweight

Date: c. 1850

Medium: glass



Title: Paperweight

Date: c. 1850

Medium: glass



Title: Paperweight

Date: c. 1850

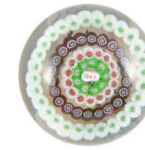
Medium: glass



Title: Paperweight

Date: c. 1925

Medium: glass



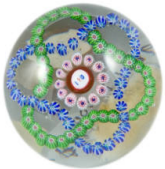
Title: Paperweight

Date: c. 1930

Primary Maker: Baccarat

Glasshouse

Medium: glass



Title: Paperweight

Date: c. 1930

Primary Maker: Baccarat

Glasshouse

Medium: glass



Title: Paperweight

Date: c. 1855

Primary Maker: Baccarat

Glasshouse

Medium: glass



Title: Paperweight

Date: c. 1850

Primary Maker: Baccarat

Glasshouse

Medium: glass



Title: Paperweight
Date: c. 1850
Primary Maker: Baccarat
Glasshouse
Medium: glass



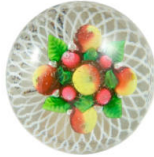
Title: Paperweight
Date: c. 1930
Primary Maker: Unknown
American
Medium: glass



Title: Paperweight
Date: c. 1930
Primary Maker: Unknown
American
Medium: glass



Title: Paperweight
Date: c. 1870
Primary Maker: Boston &
Sandwich Glass Company
Medium: glass



Title: Paperweight
Date: c. 1870
Primary Maker: Boston &
Sandwich Glass Company
Medium: glass



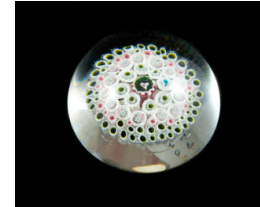
Title: Paperweight
Date: c. 1870
Primary Maker: Boston &
Sandwich Glass Company
Medium: glass



Title: Paperweight
Medium: glass



Title: Paperweight
Medium: glass



Title: Paperweight
Date: c. 1850
Medium: glass



Title: Paperweight
Date: c. 1850
Primary Maker: Baccarat
Glasshouse
Medium: glass



Title: Paperweight
Date: c. 1875
Primary Maker: Gillinder & Sons
Medium: glass



Title: Paperweight
Date: c. 1850
Medium: glass



Title: Parfait Glass
Date: c. 1915
Primary Maker: T.G. Hawkes
& Company
Medium: cut glass

Title: Parfait Glass
Date: c. 1915
Primary Maker: T.G. Hawkes
& Company
Medium: cut glass



Title: Parfait Glass
Date: c. 1915
Primary Maker: T.G. Hawkes
& Company
Medium: cut glass



Title: Parfait Glass
Date: c. 1915
Primary Maker: T.G. Hawkes
& Company
Medium: cut glass



Title: Parfait Glass
Date: c. 1915
Primary Maker: T.G. Hawkes
& Company
Medium: cut glass



Title: Parfait Glass
Date: c. 1915
Primary Maker: T.G. Hawkes
& Company
Medium: cut glass



Title: Parfait Glass
Date: c. 1915
Primary Maker: T.G. Hawkes & Company
Medium: cut glass



Title: Parfait Glass
Date: c. 1915
Primary Maker: T.G. Hawkes & Company
Medium: cut glass



Title: Parfait Glass Underplate
Date: c. 1915
Primary Maker: T.G. Hawkes & Company
Medium: cut glass



Title: Patch Box
Medium: metal; enamel; glass



Title: Patch Box
Medium: metal; enamel; glass



Title: Patch Box
Medium: metal and enamel



Title: Pedestal Table
Date: c. 1920
Primary Maker: Robert Mitchell Furniture Company
Medium: mahogany



Title: Pen Box
Medium: bronze with art glass



Title: Pen Tray
Date: c. 1898-1906
Primary Maker: Tiffany Studios
Medium: bronze with favrile glass



Title: Pen Tray
Primary Maker: Tiffany Studios
Medium: bronze; glass



Title: Pen Wipe
Date: c. 1900
Primary Maker: Louis Comfort Tiffany
Medium: brass with abalone shell and boar bristles



Title: Pepper Shaker
Date: 1910
Primary Maker: Gorham Manufacturing Company
Medium: sterling silver



Title: Pepper Shaker
Date: 1910
Primary Maker: Gorham Manufacturing Company
Medium: sterling silver



Title: Pepper Shaker Lid
Date: 1910
Primary Maker: Gorham Manufacturing Company
Medium: sterling silver



Title: Pepper Shaker Lid
Date: 1910
Primary Maker: Gorham Manufacturing Company
Medium: sterling silver



Title: Perfume Bottle
Medium: glass with metal



Title: Perfume Bottle
Medium: glass with metal and stone



Title: Perfume Bottle
Medium: glass with metal and stone



Title: Perfume Bottle
Primary Maker: Unknown
Chinese
Medium: fired Peking glass
and metal



Title: Perfume Bottle
Primary Maker: Unknown
Chinese
Medium: porcelain with
transfer print and metal



Title: Perfume Bottle
Primary Maker: Unknown
Czech
Medium: cut glass



Title: Perfume Bottle
Primary Maker: Unknown
Austrian
Medium: glass; metal;
moonstone



Title: Perfume Bottle
Primary Maker: Unknown
French
Medium: porcelain



Title: Perfume Bottle
Primary Maker: Unknown
German
Medium: glass with sterling
silver



Title: Perfume Bottle
Primary Maker: Morlee Glass
Medium: glass



Title: Perfume Bottle
Primary Maker: Morlee Glass
Medium: glass



Title: Perfume Bottle
Primary Maker: Morlee Glass
Medium: glass with metal



Title: Perfume Bottle
Primary Maker: Morlee Glass
Medium: cut glass



Title: Perfume Bottle
Medium: glass



Title: Perfume Bottle
Medium: cut glass; metal



Title: Perfume Bottle
Medium: glass



Title: Perfume Bottle
Medium: glass



Title: Perfume Bottle
Date: c. 1900
Medium: glass and metal



Title: Perfume Bottle
Medium: glass



Title: Perfume Bottle
Date: between 1904 and 1933
Primary Maker: Steuben Glass
Medium: aurene glass



Title: Perfume Bottle
Primary Maker: Baccarat
Glasshouse
Medium: glass



Title: Perfume Bottle
Date: c. 1910
Primary Maker: Baccarat
Glasshouse
Medium: glass



Title: Perfume Bottle
Primary Maker: Unknown
French
Medium: glass; metal



Title: Perfume Bottle
Primary Maker: Unknown
German
Medium: porcelain with
transfer print



**Title: Perfume Bottle
Funnel**
Medium: glass



**Title: Perfume Bottle
Holder**
Primary Maker: Unknown
French
Medium: metal



**Title: Perfume Bottle
Stopper**
Medium: cast metal and cork



**Title: Perfume Bottle
Stopper**
Primary Maker: Morlee Glass
Medium: cut glass



**Title: Perfume Bottle
Stopper**
Medium: glass



**Title: Perfume Bottle
Stopper**
Medium: enamel



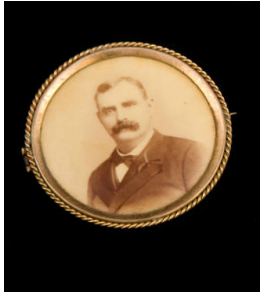
**Title: Perfume Bottle
Stopper**
Date: c. 1910
Primary Maker: Baccarat
Glasshouse
Medium: glass



**Title: Perfume Bottle
Stopper**
Primary Maker: Baccarat
Glasshouse
Medium: glass



Title: Photograph Brooch
Medium: metal and porcelain



Title: Photograph Brooch
Medium: metal and porcelain



Title: Photograph Brooch
Medium: metal and porcelain



Title: Photograph Case
Medium: guttapercha; metal



Title: Picture Frame
Medium: bronze with art glass



Title: Pietra Dura Ring
Medium: stone; gold; seed pearl



Title: Pin Tray
Date: c. 1900
Primary Maker: Louis Comfort Tiffany
Medium: brass with abalone shell



Title: Pitcher
Medium: earthenware with lustre



Title: Pitcher
Primary Maker: Herculaneum Pottery
Medium: creamware with transfer print



Title: Pitcher
Date: c. 1900
Primary Maker: T. B. Clark & Company
Medium: cut glass



Title: Pitcher
Date: c. 1900
Primary Maker: Josiah Wedgwood & Sons
Medium: earthenware



Title: Pitcher
Primary Maker: Staffordshire
Medium: earthenware with transfer print



Title: Pitcher
Primary Maker: Staffordshire
Medium: ironstone



Title: Pitcher
Primary Maker: Staffordshire
Medium: earthenware



Title: Pitcher
Date: c. 1900
Primary Maker: Pairpoint Manufacturing Company
Medium: cut glass



Title: Pitcher
Date: c. 1915
Primary Maker: T.G. Hawkes & Company
Medium: cut glass



Title: Pitcher
Date: c. 1915
Primary Maker: T.G. Hawkes & Company
Medium: cut glass



Title: Pitcher
Primary Maker: South Jersey
Medium: glass



Title: Pitcher
Medium: stoneware



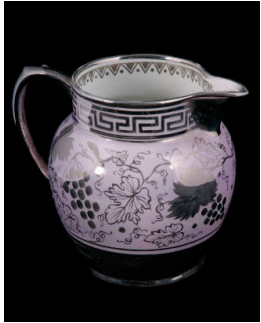
Title: Pitcher
Medium: earthenware



Title: Pitcher
Medium: earthenware with lustre



Title: Pitcher
Medium: earthenware with lustre



Title: Pitcher
Medium: ironstone with lustre



Title: Pitcher
Medium: earthenware;
multicolored transfer print



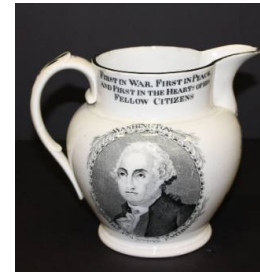
Title: Pitcher
Medium: earthenware; copper glaze; enamel



Title: Pitcher
Date: c. 1800
Primary Maker: Herculaneum Pottery
Medium: creamware with transfer print



Title: Pitcher
Primary Maker: Herculaneum Pottery
Medium: creamware with transfer print



Title: Pitcher
Date: c. 1824
Primary Maker: Herculaneum Pottery
Medium: creamware with transfer print



Title: Pitcher
Primary Maker: Herculaneum Pottery
Medium: creamware with transfer print



Title: Pitcher
Date: 1891 - 1908
Primary Maker: Josiah Wedgwood & Sons
Medium: jasperware



Title: Pitcher
Primary Maker: Josiah Wedgwood & Sons
Medium: jasperware



Title: Pitcher
Date: 1891 - 1908
Primary Maker: Josiah Wedgwood & Sons
Medium: jasperware



Title: Pitcher
Date: after 1891
Primary Maker: Staffordshire
Medium: earthenware



Title: Pitcher
Date: c. 1850
Primary Maker: Staffordshire
Medium: earthenware with transfer print



Title: Pitcher
Date: c. 1880
Primary Maker: W. Wood & Company
Medium: stoneware



Title: Pitcher
Date: September 1, 1840
Medium: stoneware



Title: Pitcher
Date: 1908
Medium: earthenware



Title: Pitcher

Medium: earthenware with lustre and transfer print



Title: Pitcher

Medium: parian ware (bisque porcelain)



Title: Pitcher

Medium: earthenware



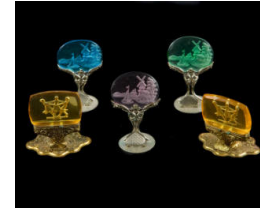
Title: Pitcher

Medium: earthenware with transfer print and lustre



Title: Placecard Holder

Primary Maker: Unknown
Czech
Medium: metal; glass



Title: Placecard Holder

Primary Maker: Unknown
Czech
Medium: glass; metal



Title: Placecard Holder

Primary Maker: Unknown
Czech
Medium: metal; glass



Title: Placecard Holder

Primary Maker: Unknown
Czech
Medium: metal; glass



Title: Placecard Holder

Primary Maker: Unknown
German
Medium: porcelain



Title: Placecard Holder
Primary Maker: Unknown
German
Medium: porcelain



Title: Placecard Holder
Primary Maker: Unknown
German
Medium: porcelain



Title: Placecard Holder
Primary Maker: Unknown
German
Medium: porcelain



Title: Placecard Holder
Primary Maker: Unknown
German
Medium: porcelain



Title: Placecard Holder
Primary Maker: Unknown
German
Medium: porcelain



Title: Placecard Holder
Primary Maker: Unknown
German
Medium: porcelain



Title: Placecard Holder
Primary Maker: Unknown
German
Medium: porcelain



Title: Placecard Holder
Primary Maker: Schierholz
Porcelain
Medium: porcelain



Title: Placecard Holder
Primary Maker: Schierholz
Porcelain
Medium: porcelain



Title: Placecard Holder
Primary Maker: Schierholz
Porcelain
Medium: porcelain



Title: Placecard Holder
Primary Maker: Schierholz
Porcelain
Medium: porcelain



Title: Placecard Holder
Primary Maker: Dresden
Medium: porcelain



Title: Placecard Holder
Primary Maker: Dresden
Medium: porcelain



Title: Placecard Holder
Primary Maker: Schierholz
Porcelain
Medium: porcelain



Title: Placecard Holder
Primary Maker: Schierholz
Porcelain
Medium: porcelain



Title: Placecard Holder
Primary Maker: Schierholz
Porcelain
Medium: porcelain



Title: Placecard Holder
Primary Maker: Schierholz
Porcelain
Medium: porcelain



Title: Plate
Medium: milk glass



Title: Plate
Date: c. 1880
Medium: ironstone with transfer print



Title: Plate
Date: c. 1900
Primary Maker: Gorham Manufacturing Company
Medium: sterling silver



Title: Plate
Date: c. 1891 - 1914
Primary Maker: W.H. Grindley & Company
Medium: earthenware with flow blue transfer print



Title: Plate
Date: c. 1850
Primary Maker: Staffordshire
Medium: stoneware with blue transfer print



Title: Plate
Date: c. 1850
Primary Maker: Staffordshire
Medium: stoneware; blue transfer print



Title: Plate
Date: 1891 - 1912
Primary Maker: Mintons
Medium: porcelain with gold



Title: Plate
Date: 1891 - 1912
Primary Maker: Mintons
Medium: porcelain with gold



Title: Plate
Date: 1843-1855
Primary Maker: Staffordshire
Medium: ironstone with flow blue transfer print



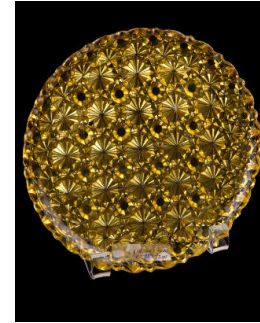
Title: Plate
Date: 1881 - 1920
Primary Maker: Coalport
Medium: porcelain



Title: Plate
Primary Maker: Unknown
American
Medium: flint glass



Title: Plate
Date: 1825-1840
Primary Maker: Unknown
American
Medium: flint glass



Title: Plate
Primary Maker: Unknown
American
Medium: pressed glass



Title: Plate
Medium: glass



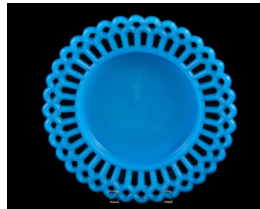
Title: Plate
Medium: glass



Title: Plate
Medium: milk glass



Title: Plate
Medium: milk glass



Title: Plate
Medium: milk glass



Title: Plate
Date: 1896-1907
Medium: milk glass



Title: Plate
Medium: milk glass



Title: Plate
Medium: milk glass



Title: Plate
Medium: milk glass



Title: Plate
Medium: milk glass



Title: Plate
Medium: milk glass



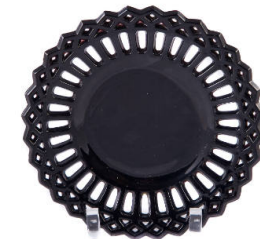
Title: Plate
Medium: milk glass



Title: Plate
Medium: milk glass



Title: Plate
Medium: milk glass



Title: Plate
Medium: milk glass



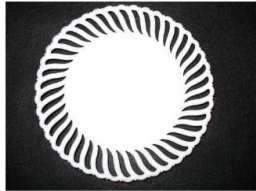
Title: Plate
Medium: milk glass



Title: Plate
Medium: milk glass



Title: Plate
Medium: milk glass



Title: Plate
Medium: milk glass



Title: Plate
Primary Maker: Rue Thiroux
Medium: porcelain



Title: Plate
Primary Maker: Rue Thiroux
Medium: porcelain



Title: Plate
Primary Maker: Satsuma
Medium: porcelain with enamel



Title: Plate
Date: c. 1840
Primary Maker: Podmore,
Walker & Company
Medium: pearlstone with black
transfer print



Title: Plate
Date: 1834-1859
Primary Maker: Podmore,
Walker & Company
Medium: ironstone with black
transfer print



Title: Plate
Medium: milk glass



Title: Plate
Medium: milk glass



Title: Plate
Medium: milk glass



Title: Plate
Medium: milk glass



Title: Plate
Medium: milk glass



Title: Plate
Primary Maker: Holdcroft & Company
Medium: ironstone with black transfer print



Title: Plate
Date: c. 1840
Primary Maker: Staffordshire
Medium: ironstone



Title: Plate
Date: c. 1840
Primary Maker: Staffordshire
Medium: ironstone with black transfer print



Title: Plate
Primary Maker: J. & G. Meakin
Medium: ironstone with purple transfer print



Title: Plate
Primary Maker: Staffordshire
Medium: earthenware with brown transfer print



Title: Plate
Primary Maker: Ralph & James Clews
Medium: earthenware with blue transfer print



Title: Plate
Primary Maker: Ralph & James Clews
Medium: earthenware with blue transfer print



Title: Plate
Date: c. 1822 - 1841
Primary Maker: Staffordshire
Medium: earthenware with red transfer print



Title: Plate
Date: 1878 - 1894
Primary Maker: Staffordshire
Medium: ironstone; flow blue transfer print

Title: Plate
Primary Maker: Manufacture Nationale de Sèvres
Medium: porcelain



Title: Plate
Medium: milk glass



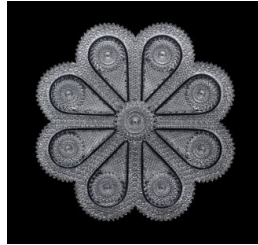
Title: Plate
Date: c. 1898
Medium: porcelain



Title: Platter
Date: after 1912
Primary Maker: Minton
Medium: porcelain with gold



Title: Platter
Date: after 1912
Primary Maker: Mintons
Medium: porcelain with gold



Title: Platter
Date: c. 1904-1917
Primary Maker: T.G. Hawkes
& Company
Medium: cut glass



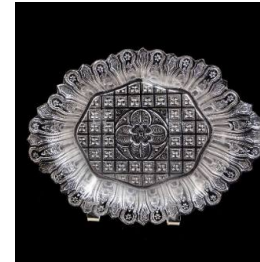
Title: Platter
Date: 1881 - 1920
Primary Maker: Coalport
Medium: porcelain



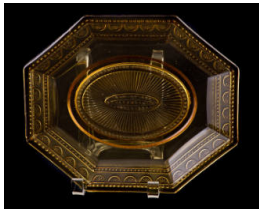
Title: Platter
Date: 1881 - 1920
Primary Maker: Coalport
Medium: porcelain



Title: Platter
Date: 1881 - 1920
Primary Maker: Coalport
Medium: porcelain



Title: Platter
Primary Maker: Unknown
American
Medium: flint glass



Title: Platter
Primary Maker: Unknown
American
Medium: pressed glass



Title: Platter
Date: 1891 - 1912
Primary Maker: Mintons
Medium: porcelain with gold



Title: Platter
Date: after 1912
Primary Maker: Mintons
Medium: porcelain with gold



Title: Platter
Date: 1911 - 1928
Primary Maker: H.P. Sinclair & Company
Medium: cut glass



Title: Platter
Primary Maker: Satsuma
Medium: porcelain with enamel



Title: Platter
Date: c. 1834 - 1859
Primary Maker: Podmore, Walker & Company
Medium: pearl stoneware; black and white transfer print



Title: Platter
Date: c. 1850
Primary Maker: Podmore, Walker & Company
Medium: ironstone with black transfer print



Title: Platter
Date: 1829 - 1845
Primary Maker: Staffordshire
Medium: earthenware with pink transfer print



Title: Platter
Date: c. 1844
Primary Maker: Ralph & James Clews
Medium: ironstone with blue transfer print



Title: Pocket Knife
Primary Maker: Unknown German
Medium: gilt-brass with diamond and other metal



Title: Pocket Watch
Date: c. 1900
Primary Maker: A.M. Hill
Medium: gold (18K) with porcelain and glass



Title: Pocket Watch
Primary Maker: Elgin National Watch Company
Medium: metal, gold, and glass with enamel



Title: Pocket Watch
Primary Maker: Waltham
Watch Company
Medium: gold; porcelain; glass



Title: Portrait Plate
Date: 1896-1910
Primary Maker: Hyacinthe
Rigaud
Medium: porcelain



Title: Portrait Plate
Date: 1896-1910
Primary Maker: Pierre Mignard
Medium: porcelain



Title: Portrait Plate
Date: 1896 - 1910
Primary Maker: Louise Vigée
Le Brun
Medium: porcelain



Title: The Pose
Date: c. 1920
Medium: bronze and ivory with
marble



Title: Postal Scale
Date: after 1899
Primary Maker: Tiffany Studios
Medium: bronze; glass



Title: Postal Scale
Date: after 1899
Primary Maker: Tiffany Studios
Medium: bronze; glass



Title: Powder Box
Primary Maker: Unknown
French
Medium: metal; blue enamel



Title: Powder Box
Medium: gold; enamel



Title: Powder Box

Medium: milk glass



Title: Powder Box

Primary Maker: Unknown
Austrian
Medium: glass



Title: Powder Box Lid

Primary Maker: Unknown
Austrian
Medium: bronze doré; enamel



Title: Powder Jar

Date: c. 1910
Primary Maker: Rookwood
Pottery Company
Medium: earthenware with
matte glaze



Title: Powder Jar Lid

Date: c. 1910
Primary Maker: Rookwood
Pottery Company
Medium: earthenware with
matte glaze



Title: Presentation Case

Primary Maker: Unknown
German
Medium: leather, fabric, and
metal



Title: Prie-Dieu Bench

Date: c. 1890
Medium: mahogany; brocade



**Title: Psyche Revived by
Cupid's Kiss (Copy)**

Primary Maker: Antonia
Canova
Medium: marble



Title: Punch Bowl

Date: c. 1900
Primary Maker: T.G. Hawkes
& Company
Medium: cut glass



Title: Punch Bowl

Date: c. 1900

Medium: cut glass



Title: Punch Bowl Base

Date: c. 1900

Medium: cut glass



Title: Punch Cup

Date: c. 1840

Primary Maker: Baccarat
Glasshouse

Medium: flint glass



Title: Ramekin

Date: 1891 - 1912

Primary Maker: Mintons

Medium: porcelain with gold



Title: Ramekin

Date: 1881 - 1920

Primary Maker: Coalport

Medium: porcelain



Title: Ramekin Saucer

Date: 1891-1902

Primary Maker: Mintons

Medium: porcelain with gold



Title: Religious Plaque

Medium: wood with gold leaf



Title: Religious Plaque

Medium: carved mother-of-pearl



Title: Religious Plaque

Medium: carved mother-of-pearl



Title: Religious Plaque
Medium: wood with gold leaf



Title: Relish Dish
Date: 1881 - 1920
Primary Maker: Coalport
Medium: porcelain



Title: Relish Dish
Date: 1881 - 1920
Primary Maker: Coalport
Medium: porcelain



Title: Relish Dish
Primary Maker: Unknown
American
Medium: pressed glass



Title: Roadster
Date: 1911
Primary Maker: Hupp Motor
Car Company
Medium: assembled metal



Title: Rocking Chair
Date: c. 1900
Primary Maker: Unknown
American
Medium: mahogany with cloth
and brass



Title: Rocking Chair
Date: c. 1900
Primary Maker: Unknown
American
Medium: mahogany with cloth
and brass



Title: Rocking Chair
Date: c. 1920
Primary Maker: Robert
Mitchell Furniture Company
Medium: mahogany



Title: Rose Bowl
Primary Maker: Pairpoint
Manufacturing Company
Medium: cut glass



Title: Rose Bowl
Date: c. 1909 - 1918
Primary Maker: T.G. Hawkes
& Company
Medium: cut glass



Title: Rose Bowl
Primary Maker: Unknown
American
Medium: cut glass



Title: Rose Bowl
Primary Maker: Unknown
American
Medium: glass



Title: Rose Bowl
Primary Maker: Unknown
American
Medium: pressed glass



Title: Rose Bowl
Medium: cut glass



Title: Rose Bowl
Date: c. 1900
Primary Maker: Pairpoint
Manufacturing Company
Medium: cut glass



Title: Rose Bowl
Primary Maker: Pairpoint
Manufacturing Company
Medium: cut glass



Title: Sake Bottle
Date: c. 1891
Primary Maker: Satsuma
Medium: porcelain with enamel



Title: Salad Plate
Date: 1881 - 1920
Primary Maker: Coalport
Medium: porcelain



Title: Saltcellar
Primary Maker: Unknown
American
Medium: glass



Title: Saltcellar
Primary Maker: Unknown
American
Medium: glass; milk glass



Title: Saltcellar
Primary Maker: Unknown
American
Medium: glass



Title: Saltcellar
Primary Maker: Unknown
American
Medium: glass



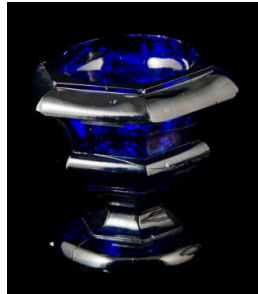
Title: Saltcellar
Primary Maker: Unknown
American
Medium: glass



Title: Saltcellar
Primary Maker: Unknown
American
Medium: glass



Title: Saltcellar
Primary Maker: Unknown
American
Medium: glass



Title: Saltcellar
Date: c. 1835
Primary Maker: Unknown
American
Medium: glass



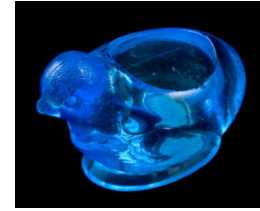
Title: Saltcellar
Primary Maker: Unknown
American
Medium: milk glass



Title: Saltcellar
Primary Maker: Unknown
American
Medium: glass



Title: Saltcellar
Primary Maker: Unknown
American
Medium: flint glass



Title: Saltcellar
Primary Maker: Unknown
American
Medium: pressed glass



Title: Saltcellar
Primary Maker: Unknown
American
Medium: flint glass



Title: Saltcellar
Primary Maker: Unknown
American
Medium: pressed glass



Title: Saltcellar
Primary Maker: Unknown
American
Medium: flint glass



Title: Saltcellar
Date: c. 1830 - 1845
Primary Maker: Boston &
Sandwich Glass Company
Medium: glass



Title: Saltcellar
Primary Maker: New England
Glass Company
Medium: flint glass



Title: Saltcellar
Primary Maker: New England
Glass Company
Medium: flint glass



Title: Saltcellar
Medium: glass



Title: Saltcellar
Date: c. 1910
Primary Maker: Gorham Manufacturing Company
Medium: sterling silver



Title: Saltcellar
Date: c. 1910
Primary Maker: Gorham Manufacturing Company
Medium: sterling silver



Title: Sauceboat
Primary Maker: Staffordshire
Medium: earthenware with flow blue transfer print



Title: Sauceboat
Date: 1881 - 1920
Primary Maker: Coalport
Medium: porcelain



Title: Sauceboat
Medium: earthenware with transfer print



Title: Sauceboat
Date: c. 1910
Primary Maker: Gorham Manufacturing Company
Medium: sterling silver



Title: Sauceboat
Date: c. 1910
Primary Maker: Gorham Manufacturing Company
Medium: sterling silver



Title: Sauceboat
Date: after 1912
Primary Maker: Mintons
Medium: porcelain with gold



Title: Sauceboat
Primary Maker: Staffordshire
Medium: earthenware with transfer print



Title: Sauceboat
Primary Maker: Staffordshire
Medium: earthenware with transfer print



Title: Sauceboat Underplate
Date: 1881 - 1920
Primary Maker: Coalport
Medium: porcelain



Title: Sauceboat Underplate
Date: after 1912
Primary Maker: Mintons
Medium: porcelain with gold



Title: Sauceboat Underplate
Primary Maker: Gorham Manufacturing Company
Medium: sterling silver



Title: Sauce Bowl
Date: 1881 - 1920
Primary Maker: Coalport
Medium: porcelain



Title: Sauce Bowl Underplate
Date: 1881 - 1920
Primary Maker: Coalport
Medium: porcelain



Title: Sauce Dish
Primary Maker: Unknown American
Medium: pressed glass



Title: Sauce Dish
Primary Maker: Unknown American
Medium: pressed glass



Title: Sauce Dish
Primary Maker: Unknown
American
Medium: flint glass



Title: Sauce Dish
Primary Maker: Unknown
American
Medium: flint glass



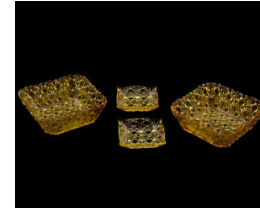
Title: Sauce Dish
Primary Maker: Unknown
American
Medium: pressed glass



Title: Sauce Dish
Primary Maker: Unknown
American
Medium: pressed glass



Title: Sauce Dish
Primary Maker: Unknown
American
Medium: pressed glass



Title: Sauce Dish
Primary Maker: Unknown
American
Medium: pressed glass



Title: Sauce Dish
Primary Maker: Unknown
American
Medium: pressed glass



Title: Sauce Dish
Primary Maker: Unknown
American
Medium: pressed glass



Title: Sauce Dish
Primary Maker: Unknown
American
Medium: pressed glass



Title: Sauce Dish
Primary Maker: Unknown
American
Medium: pressed glass



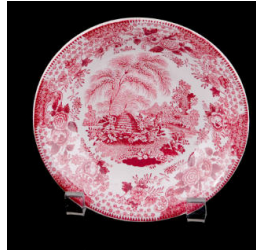
Title: Saucer
Date: 1843 - 1855
Primary Maker: Staffordshire
Medium: ironstone with flow
blue transfer print



Title: Saucer
Date: 1881 - 1920
Primary Maker: Coalport
Medium: porcelain



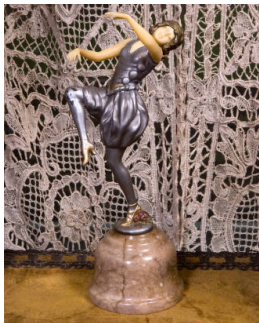
Title: Saucer
Date: 1881 - 1920
Primary Maker: Coalport
Medium: porcelain



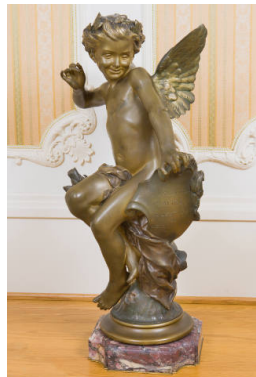
Title: Saucer
Primary Maker: Staffordshire
Medium: earthenware with red
transfer print



Title: Sculpture
Medium: cast bronze with
marble



Title: Sculpture
Medium: bronze, silver, and
ivory with marble



Title: Sculpture
Date: c. 1900
Primary Maker: Louis-
Alexandre Bottee
Medium: cast bronze with
marble base



Title: Sculpture
Date: c. 1878
Primary Maker: O. L. Wein
Medium: cast bronze



Title: Sculpture
Medium: cast bronze



Title: Sculpture
Date: 1904-1924
Medium: porcelain



Title: Sculpture
Medium: cast bronze



Title: Sculpture
Medium: bronze; ivory; marble



Title: Sculpture
Date: c. 1920
Medium: bronze and ivory with marble



Title: Seam Ripper
Date: c. 1900
Medium: metal



Title: Seated Lady
Primary Maker: François Protheau
Medium: cast bronze



Title: Secretary Desk
Date: c. 1840
Primary Maker: Unknown English
Medium: mahogany, pine, and oak with glass, metal, and leather



Title: Service Plate
Date: 1891-1912
Primary Maker: Minton's
Medium: porcelain



Title: Service Plate

Date: c. 1906

Primary Maker: Lenox Corporation

Medium: porcelain



Title: Service Plate

Date: 1912-1950

Primary Maker: Mintons

Medium: porcelain



Title: Service Plate

Date: c. 1911

Primary Maker: Heinrich & Company

Medium: porcelain



Title: Service Plate

Date: 1891 - 1932

Primary Maker: W. M. Guérin & Company

Medium: porcelain



Title: Serving Bowl

Date: 1881 - 1920

Primary Maker: Coalport

Medium: porcelain



Title: Serving Bowl

Date: 1881 - 1920

Primary Maker: Coalport

Medium: porcelain



Title: Serving Bowl

Date: 1881 - 1920

Primary Maker: Coalport

Medium: porcelain



Title: Serving Bowl

Date: 1881 - 1920

Primary Maker: Coalport

Medium: porcelain



Title: Serving Bowl

Date: after 1912

Primary Maker: Mintons

Medium: porcelain with gold



Title: Serving Bowl
Date: after 1912
Primary Maker: Mintons
Medium: porcelain with gold



Title: Serving Bowl
Date: 1891 - 1912
Primary Maker: Mintons
Medium: porcelain with gold



Title: Serving Bowl Lid
Date: 1881 - 1920
Primary Maker: Coalport
Medium: porcelain



Title: Serving Bowl Lid
Date: 1881 - 1920
Primary Maker: Coalport
Medium: porcelain



Title: Serving Bowl Lid
Date: after 1912
Primary Maker: Mintons
Medium: porcelain with gold



Title: Serving Bowl Lid
Date: after 1912
Primary Maker: Mintons
Medium: porcelain with gold



Title: Serving Dish
Date: c. 1910
Primary Maker: Gorham Manufacturing Company
Medium: sterling silver



Title: Serving Dish
Date: c. 1910
Primary Maker: Gorham Manufacturing Company
Medium: sterling silver



Title: Serving Dish Lid
Primary Maker: Gorham Manufacturing Company
Medium: sterling silver



Title: Serving Dish Lid
Date: c. 1910
Primary Maker: Gorham Manufacturing Company
Medium: sterling silver



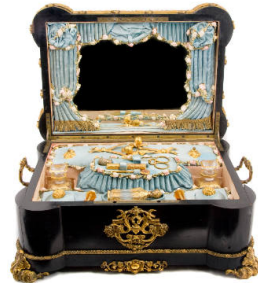
Title: Serving Platter
Date: 1881 - 1920
Primary Maker: Coalport
Medium: porcelain



Title: Serving Tray
Date: c. 1910
Primary Maker: Gorham Manufacturing Company
Medium: sterling silver



Title: Serving Tray
Date: c. 1900
Primary Maker: T.G. Hawkes & Company
Medium: cut glass



Title: Sewing Box
Date: c. 1900
Primary Maker: Unknown French
Medium: wood, porcelain, glass, and metal with silk and velvet



Title: Sewing Box Tray
Date: c. 1900
Primary Maker: Unknown French
Medium: silk with metal



Title: Sewing Box Tray
Date: c. 1900
Primary Maker: Unknown French
Medium: silk with metal



Title: Sewing Box Tray
Date: c. 1900
Primary Maker: Unknown French
Medium: silk



Title: Sewing Set Case
Medium: shell and metal with velvet and silk



Title: Shallow Bowl
Date: 1881 - 1920
Primary Maker: Coalport
Medium: porcelain



Title: Shallow Bowl
Date: 1881 - 1920
Primary Maker: Coalport
Medium: porcelain



Title: Sherbet Glass
Date: c. 1915
Primary Maker: T.G. Hawkes
& Company
Medium: cut glass



Title: Sherbet Glass
Date: c. 1915
Primary Maker: T.G. Hawkes
& Company
Medium: cut glass



Title: Sherbet Glass
Date: c. 1920
Primary Maker: Frederick
Carder
Medium: engraved glass



**Title: Sherbet Glass
Underplate**
Date: c. 1915
Primary Maker: T.G. Hawkes
& Company
Medium: cut glass



Title: Shoehorn
Date: c. 1900
Primary Maker: Unger Brothers
Medium: sterling silver with silver plate



Title: Sideboard
Date: c. 1900
Primary Maker: Unknown American
Medium: mahogany with glass and metal



Title: Side Chair
Date: c.1900
Medium: fumed oak with velvet and metal



Title: Side Chair
Date: c.1900
Medium: fumed oak with velvet and metal



Title: Side Chair
Date: c. 1920
Medium: mahogany with metal and brocade velvet



Title: Side Chair
Date: c. 1920
Medium: mahogany



Title: Side Chair
Date: c. 1920
Primary Maker: Robert Mitchell Furniture Company
Medium: mahogany



Title: Side Table
Primary Maker: Unknown
French
Medium: mahogany with oak, satinwood, and ivory and metal



Title: Side Table
Date: c. 1900
Primary Maker: Unknown
American
Medium: mahogany



Title: Silver Basket Holder
Date: c. 1920-1930
Primary Maker: Gorham Manufacturing Company
Medium: sterling silver



Title: Slip Pad
Medium: cloth



Title: Smelling Salts Bottle
Medium: glass



Title: Snuff Bottle
Primary Maker: Unknown
Chinese
Medium: metal; enamel



Title: Snuff Bottle
Medium: metal



Title: Snuff Bottle
Medium: porcelain



Title: Snuff Bottle
Medium: Peking glass



Title: Snuff Bottle
Medium: soapstone



Title: Snuff Bottle
Medium: metal



Title: Snuff Bottle
Medium: porcelain



Title: Snuff Bottle
Medium: carved quartz



Title: Snuff Bottle
Primary Maker: Unknown Chinese
Medium: Peking glass



Title: Snuff Bottle
Primary Maker: Unknown Chinese
Medium: carved green jade



Title: Snuff Bottle
Medium: carved quartz



Title: Snuff Bottle
Medium: Peking glass



Title: Snuff Bottle
Primary Maker: Unknown
Japanese
Medium: porcelain



Title: Snuff Bottles
Medium: metal; gold over silver



**Title: Snuff Bottle
Stopper**
Primary Maker: Unknown
Chinese
Medium: metal; enamel



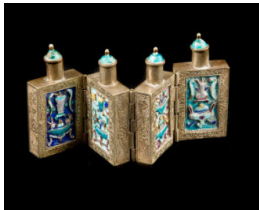
**Title: Snuff Bottle
Stopper**
Medium: jade



**Title: Snuff Bottle
Stopper**
Medium: jade and bone



**Title: Snuff Bottle
Stopper**
Medium: enamel; metal



**Title: Snuff Bottle
Stopper**
Medium: threaded metal



**Title: Snuff Bottle
Stopper**
Medium: metal; stone



Title: Soup Bowl
Date: 1891 - 1912
Primary Maker: Minton's
Medium: porcelain with gold



Title: Soup Bowl
Date: 1881 - 1920
Primary Maker: Coalport
Medium: porcelain



Title: Soup Cup Saucer
Date: 1881 - 1920
Primary Maker: Coalport
Medium: porcelain



Title: Soup Plate
Date: 1891 - 1912
Primary Maker: Minton's
Medium: porcelain with gold



Title: Spill Holder
Primary Maker: Unknown
American
Medium: flint glass



Title: Spill Holder
Date: 19th Century
Primary Maker: Staffordshire
Medium: earthenware



Title: Spill Holder
Primary Maker: Staffordshire
Medium: earthenware



Title: Spill Holder
Primary Maker: Staffordshire
Medium: earthenware



Title: Spill Holder
Primary Maker: Staffordshire
Medium: earthenware



Title: Spill Holder
Primary Maker: Staffordshire
Medium: earthenware



Title: Spill Holder
Primary Maker: Staffordshire
Medium: earthenware



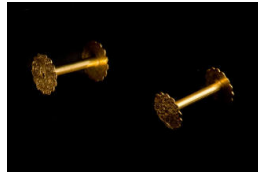
Title: Spill Holder
Primary Maker: Staffordshire
Medium: earthenware



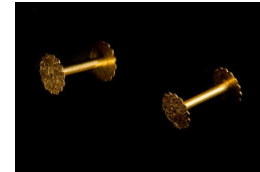
Title: Spill Holder
Primary Maker: Staffordshire
Medium: earthenware



Title: Spill Holder
Date: early 19th Century
Primary Maker: Staffordshire
Medium: earthenware



Title: Spindle Spool
Date: c. 1900
Medium: metal



Title: Spindle Spool
Date: c. 1900
Medium: metal



Title: Spirit Burner
Date: c. 1910
Primary Maker: Gorham Manufacturing Company
Medium: sterling silver with ivory and metal



Title: Spooner
Primary Maker: Unknown American
Medium: pressed glass



Title: Spooner
Primary Maker: Unknown American
Medium: flint glass



Title: Spooner
Primary Maker: Unknown
American
Medium: pressed glass



Title: Spooner
Primary Maker: Unknown
American
Medium: pressed glass



Title: Spooner
Primary Maker: Unknown
American
Medium: pressed glass



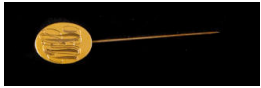
Title: Spooner
Primary Maker: Unknown
American
Medium: pressed glass



Title: Stamp Box
Medium: bronze with art glass



Title: Stickpin
Medium: gold and turquoise



Title: Stickpin
Medium: gold (14K)



Title: Stool
Date: c.1900
Primary Maker: Unknown
Chinese
Medium: mahogany



Title: Stool
Date: c. 1900
Primary Maker: Unknown
American
Medium: mahogany with cloth and brass



Title: Stool
Date: c. 1900
Primary Maker: Unknown
American
Medium: mahogany with cloth and brass



Title: Stopper
Primary Maker: Weinranck and Schmidt
Medium: sterling silver



Title: Stopper
Primary Maker: Weinranck and Schmidt
Medium: sterling silver



Title: Stopper
Primary Maker: Weinranck and Schmidt
Medium: sterling silver



Title: Stopper
Primary Maker: Weinranck and Schmidt
Medium: sterling silver



Title: Sugar Bowl
Date: c. 1910
Primary Maker: Gorham Manufacturing Company
Medium: sterling silver



Title: Sugar Bowl
Date: after 1912
Primary Maker: Mintons
Medium: porcelain with gold



Title: Sugar Bowl
Primary Maker: Unknown
American
Medium: pressed glass



Title: Sugar Bowl
Date: 1878
Primary Maker: Unknown
American
Medium: glass



Title: Sugar Bowl
Primary Maker: Unknown
American
Medium: pressed glass



Title: Sugar Bowl
Primary Maker: Unknown
American
Medium: pressed glass



Title: Sugar Bowl
Primary Maker: Unknown
American
Medium: flint glass



Title: Sugar Bowl
Primary Maker: Unknown
American
Medium: flint glass



Title: Sugar Bowl
Primary Maker: Unknown
American
Medium: pressed glass



Title: Sugar Bowl
Primary Maker: Unknown
American
Medium: pressed glass



Title: Sugar Bowl
Primary Maker: Unknown
American
Medium: pressed glass



Title: Sugar Bowl
Primary Maker: Unknown
American
Medium: pressed glass



Title: Sugar Bowl
Primary Maker: Unknown
American
Medium: flint glass



Title: Sugar Bowl
Primary Maker: Unknown
American
Medium: pressed glass



Title: Sugar Bowl
Primary Maker: Unknown
American
Medium: pressed glass



Title: Sugar Bowl
Primary Maker: Unknown
American
Medium: pressed glass



Title: Sugar Bowl
Primary Maker: Unknown
American
Medium: pressed glass



Title: Sugar Bowl
Medium: milk glass



Title: Sugar Bowl
Medium: milk glass



Title: Sugar Bowl
Date: 1881 - 1920
Primary Maker: Coalport
Medium: porcelain



Title: Sugar Bowl
Primary Maker: Rue Thiroux
Medium: porcelain



Title: Sugar Bowl
Primary Maker: Rue Thiroux
Medium: porcelain



Title: Sugar Bowl
Medium: milk glass



Title: Sugar Bowl
Primary Maker: Manufacture
Nationale de Sèvres
Medium: porcelain



Title: Sugar Bowl
Primary Maker: Manufacture
Nationale de Sèvres
Medium: porcelain



Title: Sugar Bowl Lid
Primary Maker: Rue Thiroux
Medium: porcelain



Title: Sugar Bowl Lid
Date: c. 1910
Primary Maker: Gorham
Manufacturing Company
Medium: sterling silver



Title: Sugar Bowl Lid
Date: after 1912
Primary Maker: Minton's
Medium: porcelain with gold



Title: Sugar Bowl Lid
Primary Maker: Manufacture
Nationale de Sèvres
Medium: porcelain



Title: Sugar Bowl Lid
Primary Maker: Manufacture
Nationale de Sèvres
Medium: porcelain



Title: Sugar Bowl Lid
Date: 1878
Primary Maker: Unknown
American
Medium: glass



Title: Sugar Bowl Lid
Primary Maker: Unknown
American
Medium: flint glass



Title: Sugar Bowl Lid
Primary Maker: Unknown
American
Medium: pressed glass



Title: Sugar Bowl Lid
Medium: milk glass



Title: Sugar Bowl Lid
Medium: milk glass



Title: Sugar Bowl Lid
Date: 1881 - 1920
Primary Maker: Coalport
Medium: porcelain



Title: Sugar Bowl Lid
Medium: milk glass



Title: Super Sport
Date: 1950
Primary Maker: Crosley Motor Company
Medium: assembled metal, leather



Title: Supreme Glass
Date: c. 1915
Primary Maker: T.G. Hawkes & Company
Medium: cut glass



Title: Supreme Glass
Date: c. 1915
Primary Maker: T.G. Hawkes & Company
Medium: cut glass



Title: Supreme Glass
Date: c. 1915
Primary Maker: T.G. Hawkes & Company
Medium: cut glass



Title: Supreme Glass
Date: c. 1915
Primary Maker: T.G. Hawkes & Company
Medium: cut glass



Title: Supreme Glass
Date: c. 1915
Primary Maker: T.G. Hawkes & Company
Medium: cut glass



Title: Supreme Glass
Date: c. 1915
Primary Maker: T.G. Hawkes & Company
Medium: cut glass



Title: Supreme Glass
Date: c. 1915
Primary Maker: T.G. Hawkes & Company
Medium: cut glass



Title: Supreme Glass
Date: c. 1915
Primary Maker: T.G. Hawkes & Company
Medium: cut glass



Title: Supreme Glass Underplate
Date: c. 1915
Primary Maker: T.G. Hawkes & Company
Medium: cut glass



Title: Supreme Glass Underplate
Date: c. 1915
Primary Maker: T.G. Hawkes & Company
Medium: cut glass



Title: Supreme Glass Underplate
Date: c. 1915
Primary Maker: T.G. Hawkes & Company
Medium: cut glass



Title: Supreme Glass Underplate
Date: c. 1915
Primary Maker: T.G. Hawkes & Company
Medium: cut glass



Title: Supreme Glass Underplate
Date: c. 1915
Primary Maker: T.G. Hawkes & Company
Medium: cut glass



Title: Supreme Glass Underplate
Date: c. 1915
Primary Maker: T.G. Hawkes & Company
Medium: cut glass



Title: Supreme Glass Underplate
Date: c. 1915
Primary Maker: T.G. Hawkes & Company
Medium: cut glass



Title: Swan Dish
Medium: milk glass



Title: Swan Dish Lid
Medium: milk glass



Title: Sweet Meat Bowl
Date: 1924
Medium: porcelain



Title: Sweet Meat Bowl
Lid
Date: 1924
Medium: porcelain



Title: Syrup Pitcher
Date: 1881 - 1920
Primary Maker: Coalport
Medium: porcelain



Title: Syrup Pitcher
Date: c. 1910
Primary Maker: Gorham Manufacturing Company
Medium: sterling silver



Title: Syrup Pitcher
Underplate
Date: c. 1910
Primary Maker: Gorham Manufacturing Company
Medium: sterling silver



Title: Table Lamp
Date: c. 1880-1917
Primary Maker: T.G. Hawkes & Company
Medium: cut glass with silver plate and metal



Title: Table Lamp
Medium: metal and glass



Title: Table Lamp
Primary Maker: Dresden
Medium: porcelain; metal



Title: Table Lamp Shade
Date: c. 1880-1917
Primary Maker: T.G. Hawkes & Company
Medium: cut glass with silver plate and metal



Title: Table Scarf
Date: c. 1900 - 1920
Primary Maker: Unknown
Italian
Medium: lace



Title: Tea Cart
Date: c. 1900
Primary Maker: Unknown
American
Medium: mahogany with metal



Title: Teacup
Date: 1881 - 1920
Primary Maker: Coalport
Medium: porcelain



Title: Teacup
Date: 1881 - 1920
Primary Maker: Coalport
Medium: porcelain



Title: Teacup
Date: 1881 - 1920
Primary Maker: Coalport
Medium: porcelain



Title: Teacup
Primary Maker: Rue Thiroux
Medium: porcelain



Title: Teacup Saucer
Date: 1881 - 1920
Primary Maker: Coalport
Medium: porcelain



Title: Teacup Saucer
Date: 1881 - 1920
Primary Maker: Coalport
Medium: porcelain



Title: Teacup Saucer
Primary Maker: Rue Thiroux
Medium: porcelain



Title: Tea Infuser
Primary Maker: Unknown
European
Medium: silver



Title: Teapot
Date: c. 1900
Primary Maker: H.P. Sinclair
& Company
Medium: cut glass



Title: Teapot
Date: c. 1910
Primary Maker: Gorham
Manufacturing Company
Medium: sterling silver with
ivory



Title: Teapot
Date: after 1912
Primary Maker: Mintons
Medium: porcelain with gold



Title: Teapot
Date: c. 1910
Primary Maker: T.G. Hawkes
& Company
Medium: engraved glass



Title: Teapot
Date: 1881 - 1920
Primary Maker: Coalport
Medium: porcelain



Title: Teapot
Medium: earthenware



Title: Teapot
Medium: earthenware with
lustre



Title: Teapot
Date: 1881 - 1920
Primary Maker: Coalport
Medium: porcelain



Title: Teapot
Primary Maker: Rue Thiroux
Medium: porcelain



Title: Teapot
Primary Maker: W. Wood & Company
Medium: earthenware with transfer print



Title: Teapot
Primary Maker: Manufacture Nationale de Sèvres
Medium: porcelain



Title: Teapot Lid
Primary Maker: Rue Thiroux
Medium: porcelain



Title: Teapot Lid
Date: c. 1900
Primary Maker: H.P. Sinclair & Company
Medium: cut glass



Title: Teapot Lid
Primary Maker: W. Wood & Company
Medium: earthenware with transfer print



Title: Teapot Lid
Date: after 1912
Primary Maker: Mintons
Medium: porcelain with gold



Title: Teapot Lid
Primary Maker: Manufacture Nationale de Sèvres
Medium: porcelain



Title: Teapot Lid
Date: c. 1910
Primary Maker: T.G. Hawkes & Company
Medium: engraved glass



Title: Teapot Lid
Date: 1881 - 1920
Primary Maker: Coalport
Medium: porcelain



Title: Teapot Lid
Medium: earthenware with lustre



Title: Teapot Lid
Date: 1881 - 1920
Primary Maker: Coalport
Medium: porcelain



Title: Tea Service Tray
Date: c. 1910
Primary Maker: Gorham Manufacturing Company
Medium: sterling silver with glass



Title: Texian Campaigne Plate
Primary Maker: James Beech
Medium: earthenware with brown transfer print



Title: Texian Campaigne Plate
Primary Maker: James Beech
Medium: earthenware with purple transfer print



Title: Texian Campaigne Plate
Primary Maker: James Beech
Medium: earthenware with brown transfer print



Title: Texian Campaigne Plate
Primary Maker: James Beech
Medium: earthenware with brown transfer print



Title: Texian Campaigne Platter
Primary Maker: James Beech
Medium: earthenware with blue transfer print



Title: Thimble

Date: c. 1900

Medium: metal



Title: Tie Tack

Medium: platinum with ruby and diamonds

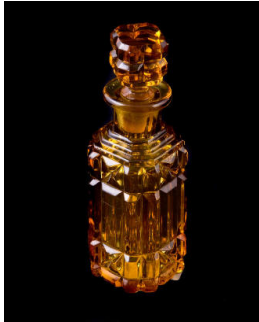


Title: Toast Cup

Date: c. 1902

Primary Maker: Artus Van Briggie

Medium: earthenware with matte glaze



Title: Toilet Bottle

Primary Maker: Unknown American

Medium: pressed glass



Title: Toilet Bottle

Primary Maker: Boston & Sandwich Glass Company

Medium: glass



Title: Toilet Bottle

Primary Maker: Boston & Sandwich Glass Company

Medium: glass



Title: Toilet Bottle

Primary Maker: Boston & Sandwich Glass Company

Medium: glass



Title: Toilet Bottle

Primary Maker: Boston & Sandwich Glass Company

Medium: glass



Title: Toilet Bottle

Primary Maker: Boston & Sandwich Glass Company

Medium: glass



Title: Toilet Bottle

Primary Maker: Boston & Sandwich Glass Company

Medium: blown glass



Title: Toilet Bottle

Medium: glass



Title: Toilet Bottle

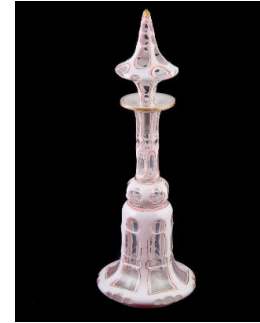
Medium: glass



Title: Toilet Bottle
Medium: glass



Title: Toilet Bottle
Medium: cut glass; sterling silver



Title: Toilet Bottle
Medium: blown glass



Title: Toilet Bottle
Medium: blown and pressed glass



Title: Toilet Bottle
Medium: glass



Title: Toilet Bottle
Medium: cut glass



Title: Toilet Bottle
Medium: pressed glass



Title: Toilet Bottle
Medium: glass; enamel



Title: Toilet Bottle
Medium: blown glass



Title: Toilet Bottle
Medium: glass



Title: Toilet Bottle
Medium: blown glass



Title: Toilet Bottle
Medium: glass



Title: Toilet Bottle
Medium: cut glass



Title: Toilet Bottle
Medium: pressed glass



Title: Toilet Bottle
Medium: glass; enamel



Title: Toilet Bottle
Medium: pressed glass



Title: Toilet Bottle
Medium: pressed glass



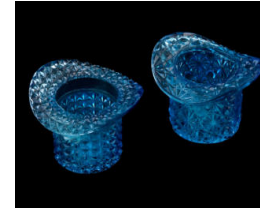
Title: Toilet Bottle
Stopper
Primary Maker: Boston & Sandwich Glass Company
Medium: glass



Title: Toothbrush
Date: c. 1910
Medium: sterling silver with
celluloid



Title: Toothpick Holder
Primary Maker: Unknown
American
Medium: glass



Title: Toothpick Holder
Primary Maker: Unknown
American
Medium: pressed glass



Title: Toothpick Holder
Primary Maker: Unknown
American
Medium: pressed glass



Title: Toothpick Holder
Primary Maker: Unknown
American
Medium: pressed glass



Title: Toothpick Holder
Primary Maker: Unknown
American
Medium: pressed glass



Title: Toy Pumper Wagon

Date: c. 1890

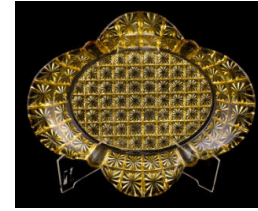
Medium: painted metal with string



Title: Tray

Date: 1908

Primary Maker: Gorham Manufacturing Company
Medium: sterling silver



Title: Tray

Primary Maker: Unknown
American

Medium: pressed glass



Title: Tray

Date: after 1903

Primary Maker: T.G. Hawkes & Company
Medium: cut glass



Title: Trestle Table

Date: c. 1900

Primary Maker: Unknown
American
Medium: mahogany



Title: Trinket Box

Date: c. 1900

Primary Maker: Unknown
Chinese
Medium: metal; jade; glass



Title: Trinket Box

Primary Maker: Unknown
French

Medium: gold (14K); enamel



Title: Trinket Box

Primary Maker: Unknown
French

Medium: metal; enamel; pearl; stone



Title: Trinket Box

Medium: milk glass



Title: Trinket Box

Primary Maker: Manufacture
Nationale de Sèvres
Medium: porcelain with metal
and glass



Title: Trivet

Date: 1881 - 1920
Primary Maker: Coalport
Medium: porcelain



Title: Tumbler

Date: c. 1915
Primary Maker: T.G. Hawkes
& Company
Medium: cut glass



Title: Tumbler

Date: c. 1915
Primary Maker: T.G. Hawkes
& Company
Medium: cut glass



Title: Tumbler

Date: c. 1915
Primary Maker: T.G. Hawkes
& Company
Medium: cut glass



Title: Tumbler

Date: c. 1915
Primary Maker: T.G. Hawkes
& Company
Medium: cut glass



Title: Tumbler

Date: c. 1915
Primary Maker: T.G. Hawkes
& Company
Medium: cut glass



Title: Tumbler

Date: c. 1915
Primary Maker: T.G. Hawkes
& Company
Medium: cut glass



Title: Tumbler

Date: c. 1915
Primary Maker: T.G. Hawkes
& Company
Medium: cut glass



Title: Tumbler
Date: c. 1915
Primary Maker: T.G. Hawkes
& Company
Medium: cut glass



Title: Tumbler
Primary Maker: Unknown
American
Medium: pressed glass



Title: Tumbler
Primary Maker: Unknown
American
Medium: pressed glass



Title: Tumbler
Primary Maker: Unknown
American
Medium: glass



Title: Tumbler
Primary Maker: Unknown
American
Medium: pressed glass



Title: Tumbler
Primary Maker: Unknown
American
Medium: flint glass



Title: Tumbler
Medium: earthenware; copper
glaze; enamel



Title: Tureen
Date: 1851-1891
Primary Maker: Staffordshire
Medium: ironstone with
transfer print



Title: Tureen
Primary Maker: Staffordshire
Medium: earthenware with
transfer print



Title: Tureen
Date: c. 1850
Primary Maker: Staffordshire
Medium: stoneware with transfer print



Title: Tureen
Date: c. 1850
Primary Maker: Staffordshire
Medium: stoneware with transfer print



Title: Tureen
Date: 1881
Primary Maker: Staffordshire
Medium: earthenware with blue transfer print



Title: Tureen
Date: 1829-1845
Primary Maker: Staffordshire
Medium: earthenware with transfer print



Title: Tureen
Primary Maker: Staffordshire
Medium: earthenware with transfer print



Title: Tureen
Primary Maker: Staffordshire
Medium: earthenware with blue transfer print



Title: Tureen
Primary Maker: Staffordshire
Medium: earthenware with transfer print



Title: Tureen Ladle
Date: c. 1850
Primary Maker: Staffordshire
Medium: stoneware with transfer print



Title: Tureen Lid
Date: 1851-1891
Primary Maker: Staffordshire
Medium: ironstone with transfer print



Title: Tureen Lid
Primary Maker: Staffordshire
Medium: earthenware with transfer print



Title: Tureen Lid
Date: c. 1850
Primary Maker: Staffordshire
Medium: stoneware with transfer print



Title: Tureen Lid
Date: c. 1850
Primary Maker: Staffordshire
Medium: stoneware with transfer print



Title: Tureen Lid
Date: 1881
Primary Maker: Staffordshire
Medium: earthenware with blue transfer print



Title: Tureen Lid
Date: 1829-1845
Primary Maker: Staffordshire
Medium: earthenware with transfer print



Title: Tureen Lid
Primary Maker: Staffordshire
Medium: earthenware with transfer print



Title: Tureen Lid
Primary Maker: Staffordshire
Medium: earthenware with blue transfer print



Title: Tureen Lid
Primary Maker: Staffordshire
Medium: earthenware with transfer print



Title: Tureen Underplate
Date: c. 1850
Primary Maker: Staffordshire
Medium: stoneware with transfer print



Title: Tureen Underplate
Date: c. 1850
Primary Maker: Staffordshire
Medium: stoneware with transfer print



Title: Uncut Shell
Medium: shell



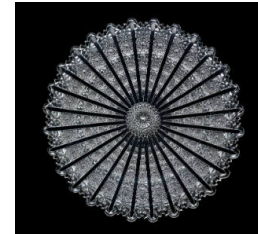
Title: Uncut Shell
Medium: shell



Title: Underplate
Date: c. 1915
Primary Maker: T.G. Hawkes & Company
Medium: cut glass



Title: Underplate
Date: c. 1915
Primary Maker: T.G. Hawkes & Company
Medium: cut glass



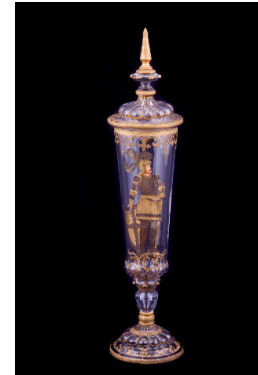
Title: Underplate
Date: c. 1880-1917
Primary Maker: T.G. Hawkes & Company
Medium: cut glass



Title: Underplate
Medium: cut glass



Title: Underplate
Primary Maker: Staffordshire
Medium: earthenware with blue transfer print



Title: Urn
Primary Maker: Unknown German
Medium: glass and metal



Title: Urn
Date: c. 1900
Medium: glass with bronze



Title: Urn
Date: c. 1900
Medium: glass with bronze



Title: Urn
Date: 1779
Primary Maker: G. Pointevin
Medium: porcelain and bronze



Title: Urn
Date: 1756
Primary Maker: Manufacture Nationale de Sèvres
Medium: porcelain; bronze



Title: Urn
Date: 1753
Primary Maker: Manufacture Nationale de Sèvres
Medium: porcelain with bronze



Title: Urn
Date: 1753
Primary Maker: Manufacture Nationale de Sèvres
Medium: porcelain with bronze



Title: Urn
Date: 1821
Primary Maker: Manufacture Nationale de Sèvres
Medium: porcelain with bronze and wood



Title: Urn
Date: c. 1805
Primary Maker: Manufacture Nationale de Sèvres
Medium: porcelain with metal



Title: Urn
Date: c. 1805
Primary Maker: Manufacture Nationale de Sèvres
Medium: porcelain with metal



Title: Urn
Date: 1872-1901
Primary Maker: Saxon
Porcelain Manufactory
Medium: porcelain



Title: Urn
Date: 1872-1901
Primary Maker: Saxon
Porcelain Manufactory
Medium: porcelain



Title: Urn
Date: 1872-1901
Primary Maker: Saxon
Porcelain Manufactory
Medium: porcelain



Title: Urn Base
Date: 1872-1901
Primary Maker: Saxon
Porcelain Manufactory
Medium: porcelain



Title: Urn Lid
Date: c. 1891
Medium: porcelain; metal



Title: Urn Lid
Date: 1756
Primary Maker: Manufacture
Nationale de Sèvres
Medium: porcelain with bronze



Title: Urn Lid
Date: 1753
Primary Maker: Manufacture Nationale de Sèvres
Medium: porcelain with bronze



Title: Urn Lid
Date: c. 1821
Primary Maker: Manufacture Nationale de Sèvres
Medium: porcelain with metal



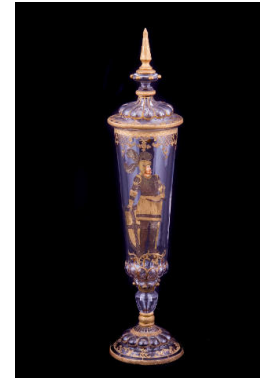
Title: Urn Lid
Date: 1753
Primary Maker: Manufacture Nationale de Sèvres
Medium: porcelain and bronze



Title: Urn Lid
Date: 1779
Primary Maker: Manufacture Nationale de Sèvres
Medium: porcelain and bronze



Title: Urn Lid
Date: 1821
Primary Maker: Manufacture Nationale de Sèvres
Medium: porcelain and brozne



Title: Urn Lid
Date: c. 1900
Primary Maker: Unknown German
Medium: glass and metal



Title: Urn Lid
Date: 1872-1901
Primary Maker: Saxon
Porcelain Manufactory
Medium: porcelain



Title: Urn Lid
Date: 1872-1901
Primary Maker: Saxon
Porcelain Manufactory
Medium: porcelain



Title: Urn Lid
Date: 1872-1901
Primary Maker: Saxon
Porcelain Manufactory
Medium: porcelain



Title: Utility Bowl
Medium: cut glass



Title: Vase
Medium: pressed glass



Title: Vase
Primary Maker: Unknown
Chinese
Medium: cast bronze



Title: Vase
Primary Maker: Unknown
Chinese
Medium: cast bronze



Title: Vase
Primary Maker: Unknown
Chinese
Medium: earthenware



Title: Vase
Date: between 1868-1912
Primary Maker: Hododa
Medium: porcelain with enamel



Title: Vase
Date: c. 1895-1900
Primary Maker: Clément
Massier
Medium: earthenware with
iridescent glazes



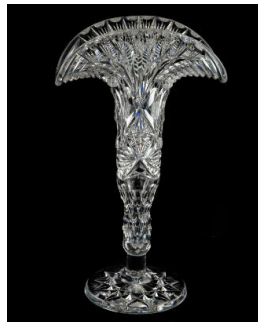
Title: Vase
Date: c. 1891
Primary Maker: Unknown
Austrian
Medium: majolica



Title: Vase
Date: c. 1920
Primary Maker: Steuben Glass
Medium: glass



Title: Vase
Date: c. 1900
Primary Maker: J. Hoare &
Company
Medium: cut glass



Title: Vase
Primary Maker: Pairpoint
Manufacturing Company
Medium: cut glass



Title: Vase
Date: c. 1910
Primary Maker: Pairpoint
Manufacturing Company
Medium: cut glass



Title: Vase
Date: 1880-1917
Primary Maker: T.G. Hawkes
& Company
Medium: cut glass



Title: Vase
Date: c. 1900
Primary Maker: T.G. Hawkes
& Company
Medium: cut glass



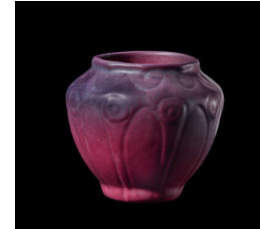
Title: Vase
Date: c. 1900
Primary Maker: T.G. Hawkes
& Company
Medium: cut glass



Title: Vase
Date: c. 1900
Primary Maker: T.G. Hawkes
& Company
Medium: cut glass



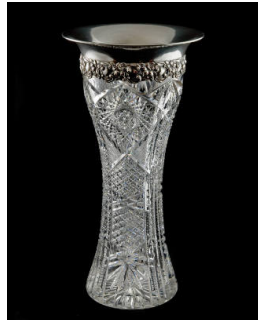
Title: Vase
Date: c. 1900
Primary Maker: T.G. Hawkes
& Company
Medium: cut glass



Title: Vase
Date: 1920 - 1922
Primary Maker: Van Briggie
Pottery
Medium: earthenware with
matte glaze



Title: Vase
Date: mid-20th century
Primary Maker: Van Briggie
Pottery
Medium: earthenware with
Ming blue glaze



Title: Vase
Date: 1876-1917
Primary Maker: Unknown
American
Medium: cut glass with sterling
silver



Title: Vase
Date: c. 1900
Primary Maker: Unknown
American
Medium: cut glass



Title: Vase
Primary Maker: Unknown
American
Medium: flint glass



Title: Vase
Primary Maker: Unknown
American
Medium: flint glass



Title: Vase
Primary Maker: Unknown
American
Medium: blown glass



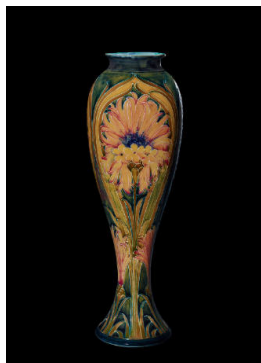
Title: Vase
Primary Maker: Unknown
American
Medium: flint glass



Title: Vase
Date: c. 1932
Primary Maker: Rookwood
Pottery Company
Medium: earthenware with
flambé glaze



Title: Vase
Date: c. 1900
Primary Maker: Lenore Asbury
Medium: earthenware with
glaze



Title: Vase
Date: 1898-1905
Primary Maker: Moorcroft
Medium: pottery with glaze



Title: Vase
Date: c. 1900
Primary Maker: Maple City
Glass Company
Medium: cut glass



Title: Vase
Date: 1915 - 1925
Primary Maker: Fulper Pottery
Company
Medium: earthenware with
lavender glaze



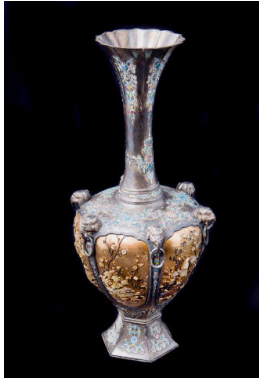
Title: Vase
Date: 1915 - 1920
Primary Maker: Fulper Pottery Company
Medium: earthenware with jade glaze



Title: Vase
Date: 1915 - 1925
Primary Maker: Fulper Pottery Company
Medium: earthenware with green-ice blue glaze



Title: Vase
Medium: glass; metal



Title: Vase
Date: c.1850
Medium: silver; gold; mother-of-pearl; jade; enamel



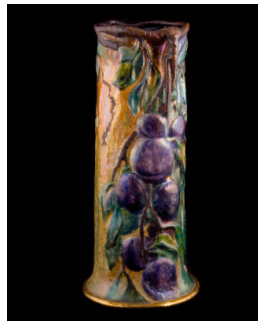
Title: Vase
Date: c. 1900
Medium: cut glass



Title: Vase
Medium: cut glass



Title: Vase
Date: c. 1884
Primary Maker: Royal Worcester Porcelain Company
Medium: porcelain with enamel



Title: Vase
Date: c. 1900
Primary Maker: Louis Comfort Tiffany
Medium: metal and enamel



Title: Vase
Date: c. 1891
Primary Maker: Satsuma
Medium: porcelain with enamel



Title: Vase
Primary Maker: Satsuma
Medium: porcelain with enamel



Title: Vase
Primary Maker: Satsuma
Medium: porcelain with enamel



Title: Vase
Primary Maker: Satsuma
Medium: porcelain with enamel



Title: Vase
Date: c. 1900
Medium: cut glass



Title: Vase
Date: c. 1900
Primary Maker: Pairpoint Manufacturing Company
Medium: cut glass



Title: Vase
Date: c. 1900
Primary Maker: Pairpoint Manufacturing Company
Medium: cut glass



Title: Vase
Date: c. 1920
Primary Maker: Saxon Porcelain Manufactory
Medium: porcelain with enamel



Title: Vase
Date: after 1903
Primary Maker: T.G. Hawkes & Company
Medium: cut glass



Title: Vase
Date: 1890
Primary Maker: Unknown Japanese
Medium: brass with enamel



Title: Vase
Primary Maker: Unknown
Japanese
Medium: brass with enamel



Title: Vase
Date: 1868-1912
Primary Maker: Unknown
Japanese
Medium: brass and enamel



Title: Vase
Date: c. 1910
Primary Maker: Carl Schmidt
Medium: earthenware with glaze



Title: Vase
Date: c. 1901
Primary Maker: Josephine Ella Zettel
Medium: earthenware with green glaze



Title: Vase
Date: 1922
Primary Maker: Kataro Shirayamadani
Medium: earthenware with black iris glaze



Title: Vase
Date: c. 1910
Primary Maker: Rookwood Pottery Company
Medium: porcelain with glaze



Title: Vase
Primary Maker: K. Scholz
Medium: porcelain



Title: Vase
Primary Maker: K. Tächl
Medium: porcelain



Title: Vegetable Bowl
Date: c. 1850
Primary Maker: Staffordshire
Medium: stoneware with transfer print



Title: Vegetable Bowl
Primary Maker: Unknown
American
Medium: flint glass



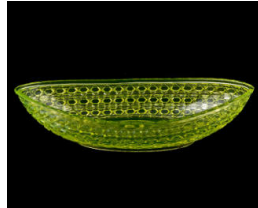
Title: Vegetable Bowl
Date: 1891-1912
Primary Maker: Mintons
Medium: porcelain with gold



Title: Vegetable Bowl Lid
Date: c. 1850
Primary Maker: Staffordshire
Medium: stoneware with transfer print



Title: Vegetable Bowl Lid
Date: 1891-1912
Primary Maker: Mintons
Medium: porcelain with gold



Title: Vegetable Dish
Primary Maker: Unknown
American
Medium: pressed glass



Title: Vegetable Dish
Primary Maker: Unknown
American
Medium: pressed glass



Title: Vegetable Dish
Primary Maker: Unknown
American
Medium: pressed glass



Title: Vinaigrette Brooch
Date: c. 1900-1910
Primary Maker: T.G. Hawkes & Company
Medium: sterling silver and cut glass



Title: Wall Hanging
Date: c. 1903
Primary Maker: Kirmanshah
Medium: woven wool



Title: Waste Bowl

Date: c. 1910

Primary Maker: Gorham Manufacturing Company

Medium: sterling silver with gold wash



Title: Watch Fob

Medium: gold (14K) and fabric with ruby and diamonds



Title: Watch Fob

Medium: white gold and diamond with other metal and fabric



Title: Watch Fob

Medium: gold, metal, and fabric



Title: Watch Fob Charm

Date: after 1910

Medium: gold (14K)



Title: Watch Fob Charm

Date: after 1910

Medium: gold (14K)



Title: Watch Fob Charm

Date: after 1910

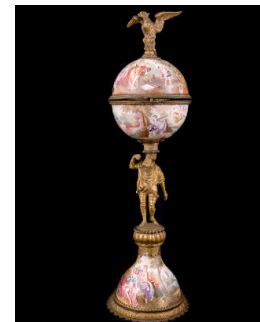
Medium: gold (14K)



Title: Watch Fob Charm

Date: after 1910

Medium: gold (14K)



Title: Watch Stand

Primary Maker: Unknown German

Medium: metal; porcelain; enamel



Title: Water Decanter
Primary Maker: Unknown
American
Medium: pressed glass



Title: Water Decanter
Primary Maker: Unknown
American
Medium: pressed glass



Title: Water Decanter
Tumbler
Primary Maker: Unknown
American
Medium: pressed glass



Title: Water Pitcher
Date: 1906
Primary Maker: Gorham
Manufacturing Company
Medium: sterling silver



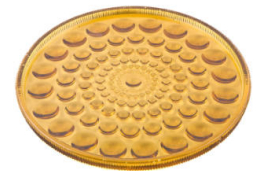
Title: Water Pitcher
Primary Maker: Unknown
American
Medium: pressed glass



Title: Water Pitcher
Primary Maker: Unknown
American
Medium: pressed glass



Title: Water Pitcher
Primary Maker: Unknown
American
Medium: pressed glass



Title: Water Tray
Primary Maker: Unknown
American
Medium: pressed glass



Title: Whisky Bottle
Date: c. 1900
Medium: cut glass



**Title: Whisky Bottle
Stopper**
Date: c. 1900
Medium: cut glass



Title: William Henry Stark
Date: c. 1930
Primary Maker: Wayman
Adams
Medium: oil on canvas



Title: William Henry Stark
Date: late 19th-early 20th
Century
Primary Maker: Andres
Molinary
Medium: oil on canvas



**Title: William
Shakespeare**
Medium: cast bronze

Title: Wine Glass
Date: c. 1915
Primary Maker: T.G. Hawkes
& Company
Medium: cut glass



**Title: "Woman at Well"
Pitcher**
Primary Maker: Staffordshire
Medium: ironstone