

Basic Report



Title: Basket
Date: c. 1900
Primary Maker: Apache
Medium: woven willow and devil's claw



Title: Basket
Date: c. 1900-1920
Primary Maker: Apache
Medium: woven willow and devil's claw



Title: Basket
Primary Maker: Apache
Medium: woven willow and devil's claw



Title: Basket
Date: c. 1900
Primary Maker: Apache
Medium: woven sumac, devil's claw and split willow



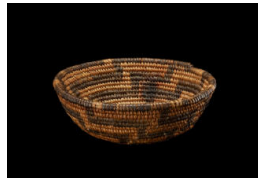
Title: Basket
Date: c. 1900
Primary Maker: Apache
Medium: woven sumac, devil's claw and split willow



Title: Basket
Date: c. 1900-1910
Primary Maker: Apache
Medium: woven sumac, devil's claw, and split willow



Title: Basket
Date: c. 1900
Primary Maker: Apache
Medium: woven sumac, devil's claw, and split willow



Title: Basket
Date: 1900-1910
Primary Maker: Apache
Medium: woven sumac, devil's claw, and split willow



Title: Basket
Date: c. 1900
Primary Maker: Apache
Medium: woven sumac, devil's claw, and split willow



Title: Basket
Date: c. 1900
Primary Maker: Apache
Medium: woven sumac, devil's claw, and split willow



Title: Basket
Date: c. 1890
Primary Maker: Apache
Medium: woven sumac, devil's claw, and split willow



Title: Basket
Date: c. 1885
Primary Maker: Apache
Medium: woven sumac, devil's claw, and split willow



Title: Basket
Date: c. 1880
Primary Maker: Apache
Medium: woven sumac, devil's claw, and split willow with leather



Title: Burden Basket
Date: c. 1900-1920
Primary Maker: Apache
Medium: woven split willow, and sumac



Title: Burden Basket
Date: c. 1880
Primary Maker: Apache
Medium: woven sumac, devil's claw and split willow



Title: Burden Basket
Primary Maker: Apache
Medium: woven sumac, devil's claw and split willow with red paint, leather, beads and metal bangles



Title: Storage Basket
Date: c. 1900
Primary Maker: Apache
Medium: woven sumac, devil's claw, and split willow



Title: Storage Box
Date: c. 1880-1890
Primary Maker: Apache
Medium: woven sumac, devil's claw, and split willow



Title: Water Jar

Date: c. 1880-1890

Primary Maker: Apache

Medium: woven sumac, devil's
claw, and split willow