

# Basic Report



**Title:** The Bluffers  
**Date:** 1924, cast c. 1929-1941, lifetime cast  
**Primary Maker:** Charles Marion Russell  
**Medium:** cast bronze



**Title:** The Bucker and the Buckeroo  
**Date:** 1923-1924, cast c. 1923-1929, lifetime cast  
**Primary Maker:** Charles Marion Russell  
**Medium:** cast bronze



**Title:** Cowboy Sitting on Horse  
**Primary Maker:** Charles Marion Russell  
**Medium:** pencil on paper



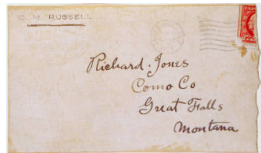
**Title:** A Dangerous Situation  
**Date:** 1897  
**Primary Maker:** Charles Marion Russell  
**Medium:** oil on cardboard mounted on hardboard



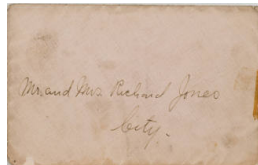
**Title:** Envelope  
**Date:** May 18, 1923; postmark, May 19, 1923  
**Primary Maker:** Charles Marion Russell  
**Medium:** pen and ink on paper



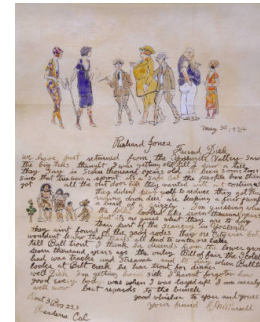
**Title:** Envelope  
**Date:** May 30, 1924; postmark, May 31, 1924  
**Primary Maker:** Charles Marion Russell  
**Medium:** pen and ink on paper



**Title:** Envelope  
**Date:** February 8, 1923; postmarked, February 9, 1923  
**Primary Maker:** Charles Marion Russell  
**Medium:** pen and ink on paper



**Title:** Envelope  
**Date:** 1916  
**Primary Maker:** Charles Marion Russell  
**Medium:** pen and ink on paper



**Title:** Friend Dick [To Richard Jones]  
**Date:** May 30, 1924  
**Primary Maker:** Charles Marion Russell  
**Medium:** pen and ink, and watercolor on paper



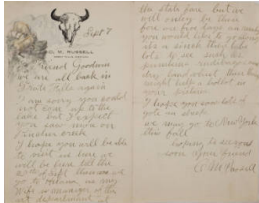
**Title:** Friend Goodwin  
**[Philip R. Goodwin]**  
**Date:** May 26, 1908  
**Primary Maker:** Charles  
Marion Russell  
**Medium:** pen and ink, and  
watercolor on paper



**Title:** Friend Goodwin  
**[Philip R. Goodwin]**  
**Date:** May 26, 1908  
**Primary Maker:** Charles  
Marion Russell  
**Medium:** pen and ink, and  
watercolor on paper



**Title:** Friend Goodwin  
**[Philip R. Goodwin]**  
**Date:** May 26, 1908  
**Primary Maker:** Charles  
Marion Russell  
**Medium:** pen and ink, and  
watercolor on paper



**Title:** Friend Goodwin  
**[To Philip R. Goodwin]**  
**Date:** September 7, 1909  
**Primary Maker:** Charles  
Marion Russell  
**Medium:** pen and ink, and  
watercolor on paper



**Title:** Friend Jake [To  
Jacob H. Hagenson]  
**Date:** c. 1920  
**Primary Maker:** Charles  
Marion Russell  
**Medium:** pen and ink, and  
watercolor on paper



**Title:** Friend Joe [To Joe  
Scheuerle]  
**Date:** June 30, 1914  
**Primary Maker:** Charles  
Marion Russell  
**Medium:** pen and ink, and  
watercolor on paper



**Title:** Friends  
**Date:** November 14, 1903  
**Primary Maker:** Charles  
Marion Russell  
**Medium:** pen and ink, and  
watercolor on paper



**Title:** Friend Schatzlein  
**[To Charles Schatzlein]**  
**Date:** October 22, 1909  
**Primary Maker:** Charles  
Marion Russell  
**Medium:** pen and ink, and  
watercolor on paper



**Title:** Friend Schatzlein  
**[To Charles Schatzlein]**  
**Date:** October 22, 1909  
**Primary Maker:** Charles  
Marion Russell  
**Medium:** pen and ink, and  
watercolor on paper



**Title:** Georg Speck [To George Speck]  
**Date:** May 18, 1923  
**Primary Maker:** Charles Marion Russell  
**Medium:** pen and ink, and watercolor on paper



**Title:** Good Wishes Is a Broke Man's Gift – That's True [To Joe Scheuerle]  
**Date:** 1920  
**Primary Maker:** Charles Marion Russell  
**Medium:** printed in brown ink on paperboard



**Title:** Good Wishes Is a Broke Man's Gift – That's True [To John Young-Hunter]  
**Date:** 1920  
**Primary Maker:** Charles Marion Russell  
**Medium:** printed in brown ink, hand-colored with watercolor on paperboard



**Title:** Happy New Year [To the Joe Scheuerle Family]  
**Date:** 1916  
**Primary Maker:** Charles Marion Russell  
**Medium:** pen and ink, and watercolor on cardboard



**Title:** Heres Hoping the Worst End of Your Trail Is behind You  
**Date:** 1926  
**Primary Maker:** Charles Marion Russell  
**Medium:** printed, hand-colored with watercolor on paperboard



**Title:** Heres Hoping the Worst End of Your Trail Is behind You  
**Date:** 1926  
**Primary Maker:** Charles Marion Russell  
**Medium:** printed in black ink, hand-colored with watercolor on paperboard



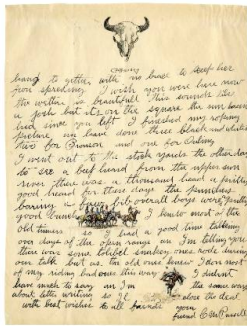
**Title:** Here's Hoping Your Trail is a Long One  
**Date:** 1924  
**Primary Maker:** Charles Marion Russell  
**Medium:** photomechanical print, hand-colored



**Title:** Hers to the Trail Behind You [To Mr. & Mrs. Richard Jones]  
**Date:** 1916  
**Primary Maker:** Charles Marion Russell  
**Medium:** pen and ink, and watercolor on paper



**Title:** Ho Ho Hayee, Friend Goodwin [To Philip R. Goodwin]  
**Date:** October 23, 1907  
**Primary Maker:** Charles Marion Russell  
**Medium:** pen and ink, and watercolor on paper



**Title: Ho Ho Hayee, Friend Goodwin [To Philip R. Goodwin]**

**Date:** October 23, 1907

**Primary Maker:** Charles Marion Russell

**Medium:** pen and ink, and watercolor on paper



**Title: Incident near Square Butte**

**Date:** 1897

**Primary Maker:** Charles Marion Russell

**Medium:** oil on canvas

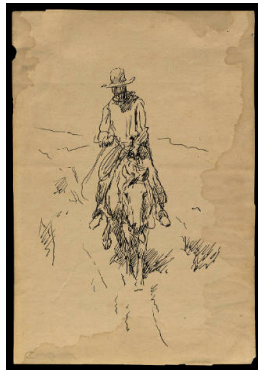


**Title: The Lunch Hour or A Happy Find**

**Date:** 1910, recast c. 1955

**Primary Maker:** Charles Marion Russell

**Medium:** cast bronze



**Title: Man Riding Horse**

**Primary Maker:** Charles Marion Russell

**Medium:** pen and ink on paper



**Title: Master Julius Geisler**

**Date:** 1902

**Primary Maker:** Charles Marion Russell

**Medium:** pen and ink, and watercolor on paper

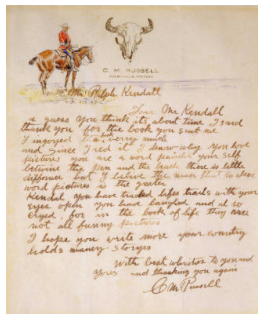


**Title: Meat for Wild Men**

**Date:** 1920, cast 1924

**Primary Maker:** Charles Marion Russell

**Medium:** cast bronze

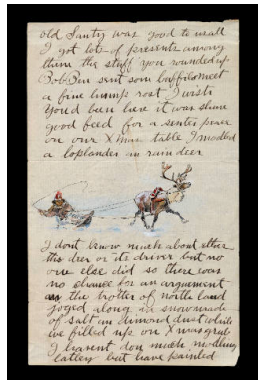


**Title: Mr. Ralph Kendall**

**Date:** c. 1919

**Primary Maker:** Charles Marion Russell

**Medium:** pen and ink, and watercolor on paper



**Title: Old Santy Was Good to Us All [To Philip R. Goodwin]**

**Date:** c. January 1908

**Primary Maker:** Charles Marion Russell

**Medium:** pen and ink, and watercolor on paper



**Title: Philip R. Goodwin and Charles Marion Russell Riding**

**Date:** 1910

**Primary Maker:** Charles Marion Russell

**Medium:** pen and ink and watercolor on paper



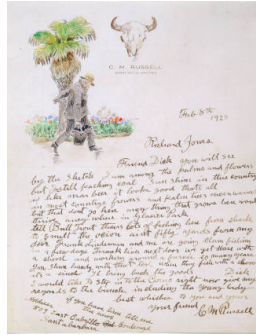


**Title: The Range Father**

**Date:** 1926, lifetime cast

**Primary Maker:** Charles Marion Russell

**Medium:** cast bronze



**Title: Richard Jones**

**Date:** February 8, 1923

**Primary Maker:** Charles Marion Russell

**Medium:** pen and ink, and watercolor on paper



**Title: Signaling**

**Approach of White Men**

**Date:** 1896

**Primary Maker:** Charles Marion Russell

**Medium:** oil on academy board

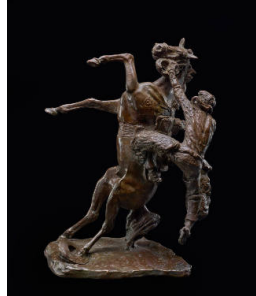


**Title: The Texas Steer**

**Date:** modeled 1925, cast 1927

**Primary Maker:** Charles Marion Russell

**Medium:** cast bronze



**Title: Where the Best of Riders Quit**

**Date:** 1921-1922, cast c. 1923-1928

**Primary Maker:** Charles Marion Russell

**Medium:** cast bronze