

# Basic Report



**Title: Watch Fob**  
**Medium:** gold (14K) and fabric with ruby and diamonds



**Title: Watch Fob**  
**Medium:** white gold and diamond with other metal and fabric



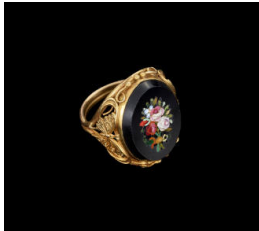
**Title: Watch Fob**  
**Medium:** gold, metal, and fabric



**Title: Cameo Ring**  
**Medium:** gold; agate or shell



**Title: Cameo Ring**  
**Medium:** gold (14K); agate or shell



**Title: Pietra Dura Ring**  
**Medium:** stone; gold; seed pearl



**Title: Bangle Bracelet**

**Medium:** metal



**Title: Bangle Bracelet**

**Date:** c. 1900

**Medium:** gold



**Title: Bangle Bracelet**

**Date:** c. 1900

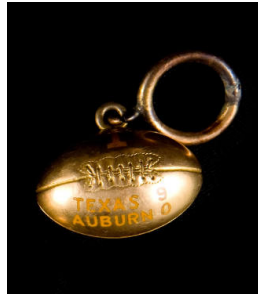
**Medium:** gold (14K) with glass



**Title: Watch Fob Charm**

**Date:** after 1910

**Medium:** gold (14K)



**Title: Watch Fob Charm**

**Date:** after 1910

**Medium:** gold (14K)



**Title: Watch Fob Charm**

**Date:** after 1910

**Medium:** gold (14K)



**Title: Watch Fob Charm**

**Date:** after 1910

**Medium:** gold (14K)



**Title: Enamel Earrings**

**Medium:** gold with diamonds  
and enamel



**Title: Locket**

**Medium:** glass and metal with  
rhinestone



**Title: Mourning Jewelry Pendant**  
**Medium:** glass and metal with seed pearls



**Title: Locket**  
**Medium:** gold and metal with glass



**Title: Locket**  
**Medium:** gold, metal, and glass with diamond



**Title: Locket**  
**Medium:** gold, metal, and glass with diamond



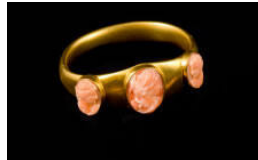
**Title: Bangle Bracelet**  
**Date:** c. 1900  
**Medium:** gold (14K) with glass



**Title: Enamel Earrings**  
**Medium:** gold with diamonds and enamel



**Title: Cameo Necklace**  
**Medium:** gold (18K) and coral



**Title: Cameo Bracelet**  
**Medium:** gold (18K) and coral