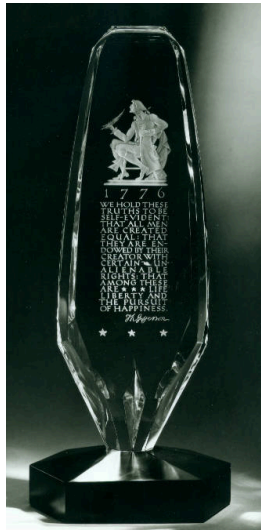


Basic Report

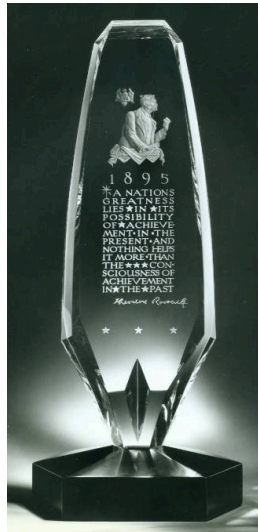


Title: Presidential Plaque, Thomas Jefferson

Date: 1959

Primary Maker: Bruce Moore

Medium: engraved crystal with ebony-finish wood base



Title: Presidential Plaque, Theodore Roosevelt

Date: 1962

Primary Maker: Bruce Moore

Medium: engraved crystal with ebony-finish wood base



Title: Trail Driver

Date: 1959

Primary Maker: Tom Lea

Medium: engraved crystal



Title: Totem of the Americas

Date: 1959

Primary Maker: Bruce Moore

Medium: engraved crystal with ebony-finish wood base



Title: Alaska

Date: 1950-1959

Primary Maker: Steuben Glass

Medium: engraved crystal



Title: Audubon Plate, Mallard Duck

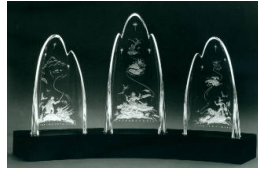
Date: 1956

Primary Maker: Steuben Glass

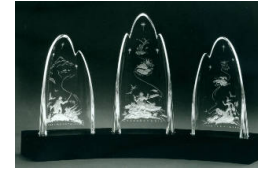
Medium: engraved crystal



Title: Connecticut
Date: 1950-1959
Primary Maker: Steuben Glass
Medium: engraved crystal



Title: The Wilderness
Trilogy, The Rivers
Date: 1957
Primary Maker: Bruce Moore
Medium: engraved crystal



Title: The Wilderness
Trilogy, The Prairies
Date: 1957
Primary Maker: Bruce Moore
Medium: engraved crystal



Title: American Ballad
Urn, Trapper
Date: 1943
Primary Maker: Steuben Glass
Medium: engraved crystal



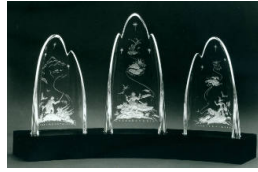
Title: American Ballad
Urn, Trapper
Date: 1943
Primary Maker: Steuben Glass
Medium: engraved crystal



Title: American Ballad
Urn, Pioneer
Date: 1943
Primary Maker: Steuben Glass
Medium: engraved crystal



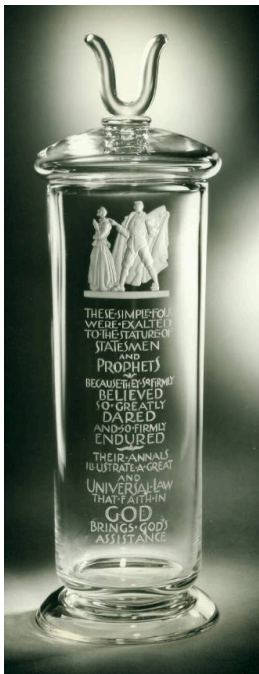
Title: American Ballad Urn, Pioneer
Date: 1943
Primary Maker: Steuben Glass
Medium: engraved crystal



Title: The Wilderness Trilogy, The Mountains
Date: 1957
Primary Maker: Bruce Moore
Medium: engraved crystal



Title: Puritan Vase
Date: 1959
Primary Maker: Steuben Glass
Medium: engraved crystal



Title: Puritan Vase Lid
Date: 1959
Primary Maker: Steuben Glass
Medium: engraved crystal



Title: Young American Bald Eagle
Date: 1969
Primary Maker: Edward Marshall Boehm
Medium: porcelain, bisque fired, hand-painted



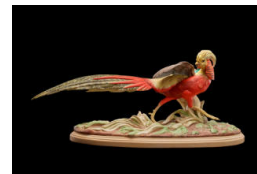
Title: Parula Warblers with Morning Glories
Date: 1965
Primary Maker: Edward Marshall Boehm
Medium: porcelain, bisque fired, hand-painted



Title: Prothonotary Warbler, Female with Eggs and Fledgling
Date: 1958
Primary Maker: Edward Marshall Boehm
Medium: porcelain; bisque fired; hand-painted



Title: Indigo Bunting on Wild Rose
Date: 1957
Primary Maker: Edward Marshall Boehm
Medium: porcelain; bisque fired; hand-painted



Title: Golden Oriental Pheasant
Date: C. 1955
Primary Maker: Edward Marshall Boehm
Medium: porcelain; bisque fired; hand-painted



Title: Mountain Bluebirds on Flowering Magnolia
Date: 1963
Primary Maker: Edward Marshall Boehm
Medium: porcelain; bisque fired; hand-painted



Title: Nonpareil Buntings on Flowering Raspberry
Date: 1958
Primary Maker: Edward Marshall Boehm
Medium: porcelain; bisque fired; hand-painted



Title: Goldfinches with Scottish Thistle
Date: 1961
Primary Maker: Edward Marshall Boehm
Medium: porcelain; bisque fired; hand-colored



Title: Golden Crowned Kinglet with Oriental Poppies
Date: Issued 1956
Primary Maker: Edward Marshall Boehm
Medium: porcelain; bisque fired; hand-painted



Title: Cerulean Warblers on Wild Rose
Date: 1957
Primary Maker: Edward Marshall Boehm
Medium: porcelain; bisque fired; hand-painted;



Title: Ptarmigan's Rock
Date: 1962
Primary Maker: Edward Marshall Boehm
Medium: porcelain; bisque fired; hand-painted



Title: Chameleon
Date: 1962
Primary Maker: Edward Marshall Boehm
Medium: porcelain; bisque fired; hand-painted



Title: Ring-Necked Pheasants
Date: 1953
Primary Maker: Edward Marshall Boehm
Medium: porcelain; hand-painted; bisque fired with some glaze



Title: Cardinal with Grape Vine
Date: 1955
Primary Maker: Edward Marshall Boehm
Medium: porcelain, hand-painted, bisque fired



Title: Ptarmigan
Date: 1962
Primary Maker: Edward Marshall Boehm
Medium: porcelain; bisque fired; hand-painted



Title: Green Jay with Black Persimmon
Date: 1966
Primary Maker: Edward Marshall Boehm
Medium: porcelain, bisque fired, hand-painted



Title: Blue Jay with Strawberries
Date: 1962
Primary Maker: Edward Marshall Boehm
Medium: porcelain, bisque fired, hand-painted



Title: Ring-Necked Pheasants
Date: 1953
Primary Maker: Edward Marshall Boehm
Medium: porcelain; hand-painted ; bisque fired with some glaze



Title: Cardinal with Grape Vine
Date: 1955
Primary Maker: Edward Marshall Boehm
Medium: porcelain, hand-painted, bisque fired



Title: Blue Jays
Date: 1962
Primary Maker: Edward Marshall Boehm
Medium: porcelain, bisque fired, hand-painted



Title: Ptarmigan
Date: 1962
Primary Maker: Edward Marshall Boehm
Medium: porcelain; bisque fired; hand-painted



Title: Yellow-Throated Warbler on Crimson-Eye Mallow
Date: 1957
Primary Maker: Edward Marshall Boehm
Medium: porcelain; bisque fired; hand-painted



Title: Hummingbird on Cactus (Blue-throated Hummingbird on Ladyfinger Cactus)
Date: 1958
Primary Maker: Edward Marshall Boehm
Medium: porcelain; bisque fired; hand-painted



Title: Green Jay with Black Persimmon
Date: 1966
Primary Maker: Edward Marshall Boehm
Medium: porcelain, bisque fired, hand-painted



Title: Allen's Hummingbird with Iris
Date: 1992
Primary Maker: Boehm
Porcelain
Medium: porcelain, bisque fired, hand-painted



Title: Flicker with Chipmunk and Mushrooms
Date: 1971
Primary Maker: Boehm
Porcelain
Medium: porcelain, bisque fired, hand-painted



Title: Yellow-Bellied Sapsuckers on Wild Apple Blossom
Date: 1972
Primary Maker: Boehm
Porcelain
Medium: porcelain; bisque fired; hand-painted



Title: Spirit of Bethlehem: Mary
Date: 1979
Primary Maker: Boehm
Porcelain
Medium: porcelain



Title: Spirit of Bethlehem: Christ Child
Date: 1979
Primary Maker: Boehm
Porcelain
Medium: porcelain



Title: Spirit of Bethlehem: Aged Shepherd
Date: 1981
Primary Maker: Boehm
Porcelain
Medium: porcelain



Title: Spirit of Bethlehem: Young Shepherd
Date: 1981
Primary Maker: Boehm
Porcelain
Medium: porcelain



Title: Spirit of Bethlehem: Ox
Date: 1983
Primary Maker: Boehm
Porcelain
Medium: porcelain



Title: Spirit of Bethlehem: Donkey
Date: 1983
Primary Maker: Boehm
Porcelain
Medium: porcelain



Title: Spirit of Bethlehem: Townspeople: Woman with Fruit
Date: 1983
Primary Maker: Boehm
Porcelain
Medium: porcelain



Title: Spirit of Bethlehem: King Melchior
Date: 1982
Primary Maker: Boehm
Porcelain
Medium: porcelain



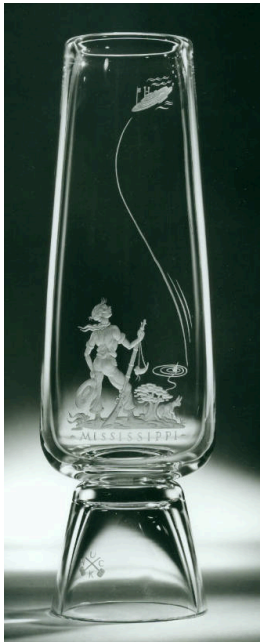
Title: Spirit of Bethlehem: King Balthazar
Date: 1982
Primary Maker: Boehm
 Porcelain
Medium: porcelain



Title: Spirit of Bethlehem: Angel Standing
Date: 1980
Primary Maker: Boehm
 Porcelain
Medium: porcelain



Title: Tom Sawyer
Date: c. 1955
Primary Maker: Bruce Moore
Medium: engraved blown crystal



Title: Huckleberry Finn
Date: c. 1955
Primary Maker: Bruce Moore
Medium: engraved blown crystal



Title: American Eagle
Date: Issued 1957-1961, c. 1957
Primary Maker: Edward Marshall Boehm
Medium: porcelain, bisque fired, hand-painted



Title: Presidential Plaque, George Washington
Date: 1959
Primary Maker: Bruce Moore
Medium: engraved crystal with ebony-finish wood base



Title: Poppy
Date: 1947
Primary Maker: Steuben Glass
Medium: engraved crystal



Title: Presidential Plaque, Abraham Lincoln
Date: 1959
Primary Maker: Bruce Moore
Medium: engraved crystal with ebony-finish wood base



Title: Spirit of Bethlehem: King Gaspar
Date: 1982
Primary Maker: Boehm
Medium: porcelain



Title: Ruby-Throated Humming Birds and Fuchsia
Date: Issued 1950
Primary Maker: Dorothy Doughty
Medium: porcelain, hand-painted



Title: Ruby-Throated Humming Birds and Fuchsia
Date: Issued 1950
Primary Maker: Dorothy Doughty
Medium: porcelain, hand-painted



Title: Orange Blossom Sprays
Date: Issued 1947
Primary Maker: Dorothy Doughty
Medium: porcelain, hand-painted



Title: Apple Blossom Sprays
Date: Issued 1941
Primary Maker: Dorothy Doughty
Medium: porcelain, hand-painted



Title: Apple Blossom Sprays
Date: Issued 1941
Primary Maker: Dorothy Doughty
Medium: porcelain, hand-painted



Title: Cactus Wrens and Prickly Pear
Date: Issued 1959
Primary Maker: Dorothy Doughty
Medium: porcelain, hand-painted



Title: American Goldfinches and Thistle
Date: Issued 1936
Primary Maker: Dorothy Doughty
Medium: porcelain, hand-painted



Title: Virginian Cardinals and Orange Blossom
Date: Issued 1937
Primary Maker: Dorothy Doughty
Medium: porcelain, hand-painted



Title: Virginian Cardinals and Orange Blossom
Date: Issued 1937
Primary Maker: Dorothy Doughty
Medium: porcelain, hand-painted



Title: Indigo Buntings and Blackberry
Date: Issued 1941
Primary Maker: Dorothy Doughty
Medium: porcelain, hand-painted



Title: Baltimore Orioles and Tulip Tree
Date: Issued 1938
Primary Maker: Dorothy Doughty
Medium: porcelain, hand-painted



Title: Baltimore Orioles and Tulip Tree
Date: Issued 1938
Primary Maker: Dorothy Doughty
Medium: porcelain, hand-painted



Title: Blue-Grey Gnatcatchers and Dogwood
Date: Issued 1955
Primary Maker: Dorothy Doughty
Medium: porcelain, hand-painted



Title: Magnolia Warblers and Magnolia
Date: Issued 1950
Primary Maker: Dorothy Doughty
Medium: porcelain, hand-painted



Title: Chickadees and Larch
Date: Issued 1938
Primary Maker: Dorothy Doughty
Medium: porcelain, hand-painted



Title: Blue-Grey Gnatcatchers and Dogwood
Date: Issued 1955
Primary Maker: Dorothy Doughty
Medium: porcelain, hand-painted



Title: Parula Warblers and Sweet Bay
Date: Issued 1957
Primary Maker: Dorothy Doughty
Medium: porcelain, hand-painted



Title: Parula Warblers and Sweet Bay
Date: Issued 1957
Primary Maker: Dorothy Doughty
Medium: porcelain, hand-painted



Title: Phoebes and Flame Vine
Date: Issued 1958
Primary Maker: Dorothy Doughty
Medium: porcelain, hand-painted



Title: Phoebes and Flame Vine
Date: Issued 1958
Primary Maker: Dorothy Doughty
Medium: porcelain, hand-painted



Title: Phoebes and Flame Vine
Date: Issued 1958
Primary Maker: Dorothy Doughty
Medium: porcelain, hand-painted



Title: Phoebes and Flame Vine
Date: Issued 1958
Primary Maker: Dorothy Doughty
Medium: porcelain, hand-painted



Title: Yellow-Throats and Water Hyacinth
Date: Issued 1958
Primary Maker: Dorothy Doughty
Medium: porcelain, hand-painted



Title: Yellow-Throats and Water Hyacinth
Date: Issued 1958
Primary Maker: Dorothy Doughty
Medium: porcelain, hand-painted



Title: Cactus Wrens and Prickly Pear

Date: Issued 1959

Primary Maker: Dorothy Doughty

Medium: porcelain, hand-painted



Title: Hooded Warblers and Cherokee Rose

Date: Issued 1961

Primary Maker: Dorothy Doughty

Medium: porcelain, hand-painted



Title: Lazuli Buntings and Choke Cherry

Date: Issued 1962

Primary Maker: Dorothy Doughty

Medium: porcelain, hand-painted



Title: Orange Blossom Sprays

Date: c. 1942

Primary Maker: Dorothy Doughty

Medium: porcelain, hand-painted



Title: Trail Driver

Date: 1959

Primary Maker: Tom Lea

Medium: fired crystal



Title: Spirit of Bethlehem: Joseph

Date: 1979

Primary Maker: Boehm Porcelain

Medium: porcelain



Title: Robin with Daffodils

Date: 1964

Primary Maker: Edward Marshall Boehm

Medium: porcelain; bisque fired; hand-painted



Title: Varied Buntings with Crown Imperial

Date: 1965

Primary Maker: Edward Marshall Boehm

Medium: porcelain, bisque fired, hand-painted



Title: 1959.60. Federal Duck Stamp Plate

Date: c. 1970

Primary Maker: Maynard Reece

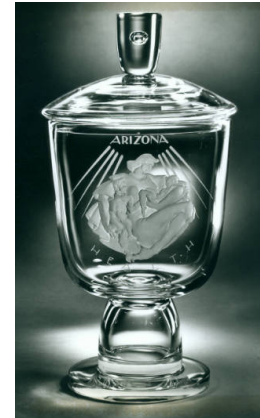
Medium: porcelain



Title: Alabama
Date: 1950-1959
Primary Maker: Steuben Glass
Medium: engraved crystal



Title: California
Date: 1950-1959
Primary Maker: Steuben Glass
Medium: engraved crystal



Title: Arizona
Date: 1950-1959
Primary Maker: Steuben Glass
Medium: engraved crystal



Title: Arkansas
Date: 1950-1959
Primary Maker: Steuben Glass
Medium: engraved crystal



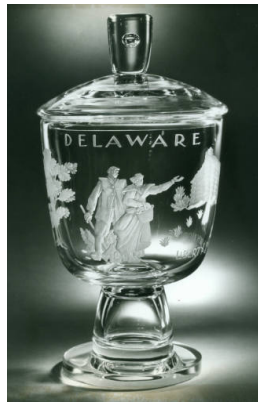
Title: Colorado
Date: 1950-1959
Primary Maker: Steuben Glass
Medium: engraved crystal



Title: Florida
Date: 1950-1959
Primary Maker: Steuben Glass
Medium: engraved crystal



Title: Georgia
Date: 1950-1959
Primary Maker: Steuben Glass
Medium: engraved crystal



Title: Delaware
Date: 1950-1959
Primary Maker: Steuben Glass
Medium: engraved crystal



Title: Hawaii
Date: 1950-1959
Primary Maker: Steuben Glass
Medium: engraved crystal



Title: Illinois
Date: 1950-1959
Primary Maker: Steuben Glass
Medium: engraved crystal



Title: Idaho
Date: 1950-1959
Primary Maker: Steuben Glass
Medium: engraved crystal



Title: Iowa
Date: 1950-1959
Primary Maker: Steuben Glass
Medium: engraved crystal



Title: Kansas
Date: 1950-1959
Primary Maker: Steuben Glass
Medium: engraved crystal



Title: Indiana
Date: 1950-1959
Primary Maker: Steuben Glass
Medium: engraved crystal



Title: Mississippi
Date: 1950-1959
Primary Maker: Steuben Glass
Medium: engraved crystal

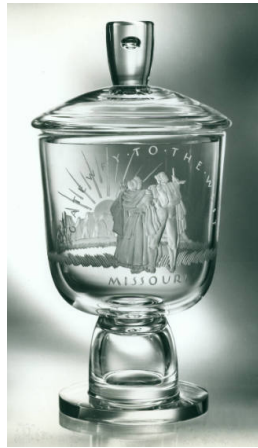


Title: Minnesota

Date: 1950-1959

Primary Maker: Steuben Glass

Medium: engraved crystal

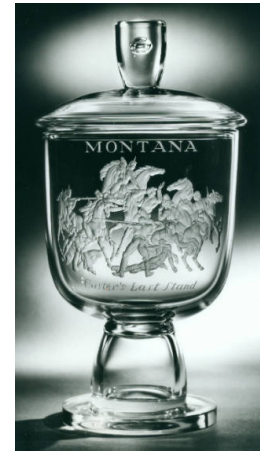


Title: Missouri

Date: 1950-1959

Primary Maker: Steuben Glass

Medium: engraved crystal



Title: Montana

Date: 1950-1959

Primary Maker: Steuben Glass

Medium: engraved crystal

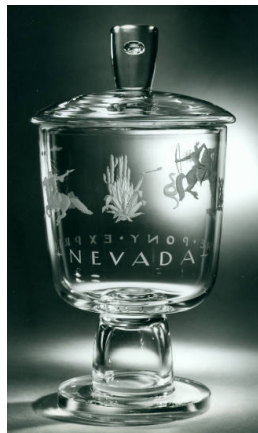


Title: Nebraska

Date: 1950-1959

Primary Maker: Steuben Glass

Medium: engraved crystal

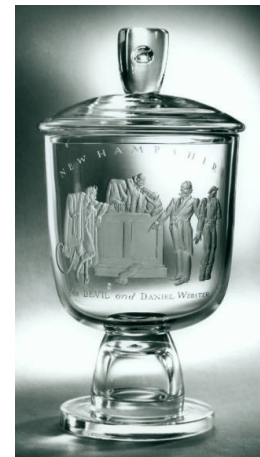


Title: Nevada

Date: 1950-1959

Primary Maker: Steuben Glass

Medium: engraved crystal

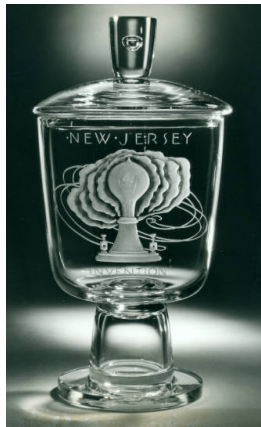


Title: New Hampshire

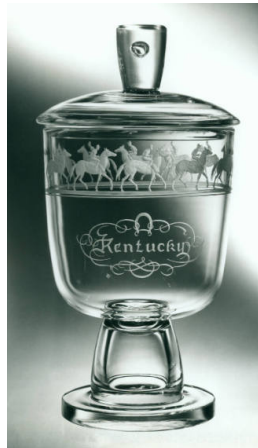
Date: 1950-1959

Primary Maker: Steuben Glass

Medium: engraved crystal



Title: New Jersey
Date: 1950-1959
Primary Maker: Steuben Glass
Medium: engraved crystal



Title: Kentucky
Date: 1949
Primary Maker: Steuben Glass
Medium: engraved crystal



Title: Louisiana
Date: 1950-1959
Primary Maker: Steuben Glass
Medium: engraved crystal



Title: Louisiana
Date: 1950-1959
Primary Maker: Steuben Glass
Medium: crystal



Title: Maine
Date: 1950-1959
Primary Maker: Steuben Glass
Medium: engraved crystal



Title: Maryland
Date: 1950-1959
Primary Maker: Steuben Glass
Medium: engraved crystal



Title: Michigan
Date: 1950-1959
Primary Maker: Steuben Glass
Medium: engraved crystal



Title: Massachusetts
Date: 1950-1959
Primary Maker: Steuben Glass
Medium: engraved crystal



Title: Wisconsin
Date: 1950-1959
Primary Maker: Steuben Glass
Medium: engraved crystal



Title: Wyoming
Date: 1950-1959
Primary Maker: Steuben Glass
Medium: engraved crystal



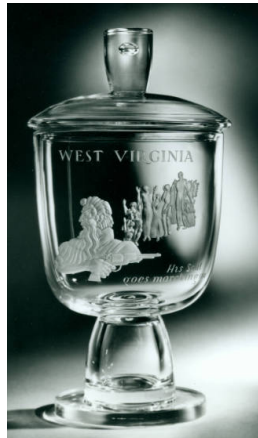
Title: Puerto Rico
Date: 1950-1959
Primary Maker: Steuben Glass
Medium: engraved crystal



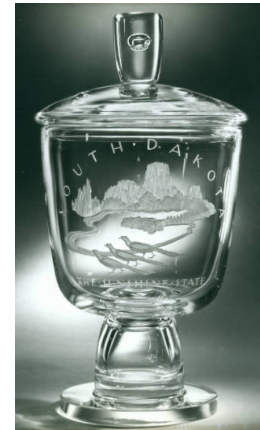
Title: Virginia
Date: 1950-1959
Primary Maker: Steuben Glass
Medium: engraved crystal



Title: Washington
Date: 1950-1959
Primary Maker: Steuben Glass
Medium: engraved crystal



Title: West Virginia
Date: 1950-1959
Primary Maker: Steuben Glass
Medium: engraved crystal



Title: South Dakota
Date: 1950-1959
Primary Maker: Steuben Glass
Medium: engraved crystal



Title: Tennessee

Date: 1950-1959

Primary Maker: Steuben Glass

Medium: engraved crystal



Title: Texas

Date: 1950-1959

Primary Maker: Steuben Glass

Medium: engraved crystal

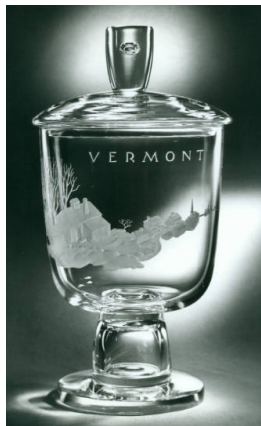


Title: Utah

Date: 1950-1959

Primary Maker: Steuben Glass

Medium: engraved crystal



Title: Vermont

Date: 1950-1959

Primary Maker: Steuben Glass

Medium: engraved crystal



Title: South Carolina

Date: 1950-1959

Primary Maker: Steuben Glass

Medium: engraved crystal



Title: Rhode Island

Date: 1950-1959

Primary Maker: Steuben Glass

Medium: engraved crystal



Title: Pennsylvania

Date: 1950-1959

Primary Maker: Steuben Glass

Medium: engraved crystal



Title: Oregon

Date: 1950-1959

Primary Maker: Steuben Glass

Medium: engraved crystal



Title: Oklahoma

Date: 1950-1959

Primary Maker: Steuben Glass

Medium: engraved crystal



Title: New Mexico

Date: 1950-1959

Primary Maker: Steuben Glass

Medium: engraved crystal



Title: New York

Date: 1950-1959

Primary Maker: Steuben Glass

Medium: engraved crystal



Title: Ohio

Date: 1950-1959

Primary Maker: Steuben Glass

Medium: engraved crystal



Title: North Dakota

Date: 1950-1959

Primary Maker: Steuben Glass

Medium: engraved crystal



Title: North Carolina

Date: 1950-1959

Primary Maker: Steuben Glass

Medium: engraved crystal