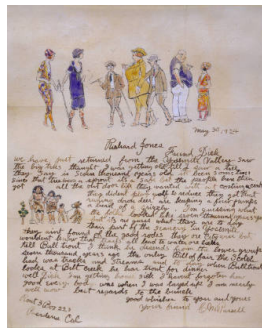


Basic Report



Title: Georg Speck [To George Speck]
Date: May 18, 1923
Primary Maker: Charles Marion Russell
Medium: pen and ink, and watercolor on paper



Title: Friend Dick [To Richard Jones]
Date: May 30, 1924
Primary Maker: Charles Marion Russell
Medium: pen and ink, and watercolor on paper



Title: Richard Jones
Date: February 8, 1923
Primary Maker: Charles Marion Russell
Medium: pen and ink, and watercolor on paper



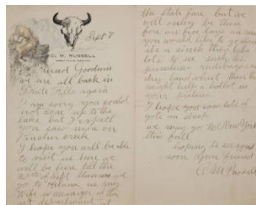
Title: Friend Goodwin [Philip R. Goodwin]
Date: May 26, 1908
Primary Maker: Charles Marion Russell
Medium: pen and ink, and watercolor on paper



Title: Friend Goodwin [Philip R. Goodwin]
Date: May 26, 1908
Primary Maker: Charles Marion Russell
Medium: pen and ink, and watercolor on paper



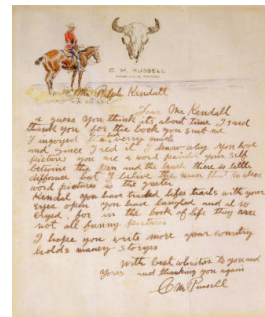
Title: Friend Goodwin [Philip R. Goodwin]
Date: May 26, 1908
Primary Maker: Charles Marion Russell
Medium: pen and ink, and watercolor on paper



Title: Friend Goodwin [To Philip R. Goodwin]
Date: September 7, 1909
Primary Maker: Charles Marion Russell
Medium: pen and ink, and watercolor on paper



Title: Friends
Date: November 14, 1903
Primary Maker: Charles Marion Russell
Medium: pen and ink, and watercolor on paper



Title: Mr. Ralph Kendall
Date: c. 1919
Primary Maker: Charles Marion Russell
Medium: pen and ink, and watercolor on paper



Title: Master Julius Geisler

Date: 1902

Primary Maker: Charles Marion Russell

Medium: pen and ink, and watercolor on paper



Title: Friend Joe [To Joe Scheuerle]

Date: June 30, 1914

Primary Maker: Charles Marion Russell

Medium: pen and ink, and watercolor on paper



Title: Envelope

Date: May 18, 1923; postmark, May 19, 1923

Primary Maker: Charles Marion Russell

Medium: pen and ink on paper



Title: Envelope

Date: May 30, 1924; postmark, May 31, 1924

Primary Maker: Charles Marion Russell

Medium: pen and ink on paper



Title: Envelope

Date: February 8, 1923; postmarked, February 9, 1923

Primary Maker: Charles Marion Russell

Medium: pen and ink on paper



Title: Heres Hoping the Worst End of Your Trail Is behind You

Date: 1926

Primary Maker: Charles Marion Russell

Medium: printed, hand-colored with watercolor on paperboard

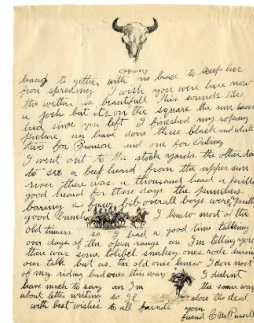


Title: Ho Ho Hayee, Friend Goodwin [To Philip R. Goodwin]

Date: October 23, 1907

Primary Maker: Charles Marion Russell

Medium: pen and ink, and watercolor on paper



Title: Ho Ho Hayee, Friend Goodwin [To Philip R. Goodwin]

Date: October 23, 1907

Primary Maker: Charles Marion Russell

Medium: pen and ink, and watercolor on paper

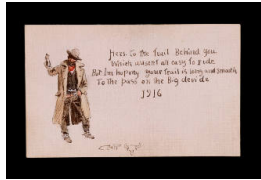


Title: Good Wishes Is a Broke Man's Gift – That's True [To John Young-Hunter]

Date: 1920

Primary Maker: Charles Marion Russell

Medium: printed in brown ink, hand-colored with watercolor on paperboard

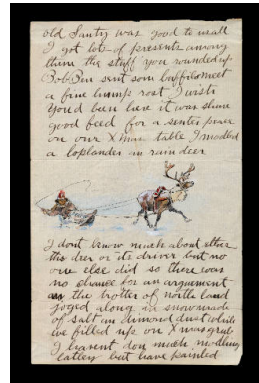


Title: Hers to the Trail Behind You [To Mr. & Mrs. Richard Jones]

Date: 1916

Primary Maker: Charles Marion Russell

Medium: pen and ink, and watercolor on paper



Title: Old Santy Was Good to Us All [To Philip R. Goodwin]

Date: c. January 1908

Primary Maker: Charles Marion Russell

Medium: pen and ink, and watercolor on paper



Title: Here's Hoping Your Trail is a Long One

Date: 1924

Primary Maker: Charles Marion Russell

Medium: photomechanical print, hand-colored



Title: Friend Jake [To Jacob H. Hagenson]

Date: c. 1920

Primary Maker: Charles Marion Russell

Medium: pen and ink, and watercolor on paper



Title: Heres Hoping the Worst End of Your Trail Is behind You

Date: 1926

Primary Maker: Charles Marion Russell

Medium: printed in black ink, hand-colored with watercolor on paperboard



Title: Friend Schatzlein [To Charles Schatzlein]

Date: October 22, 1909

Primary Maker: Charles Marion Russell

Medium: pen and ink, and watercolor on paper



Title: Good Wishes Is a Broke Man's Gift – That's True [To Joe Scheuerle]

Date: 1920

Primary Maker: Charles Marion Russell

Medium: printed in brown ink on paperboard

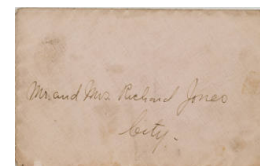


Title: Happy New Year [To the Joe Scheuerle Family]

Date: 1916

Primary Maker: Charles Marion Russell

Medium: pen and ink, and watercolor on cardboard



Title: Envelope

Date: 1916

Primary Maker: Charles Marion Russell

Medium: pen and ink on paper



**Title: Friend Schatzlein
[To Charles Schatzlein]**

Date: October 22, 1909

Primary Maker: Charles
Marion Russell

Medium: pen and ink, and
watercolor on paper