

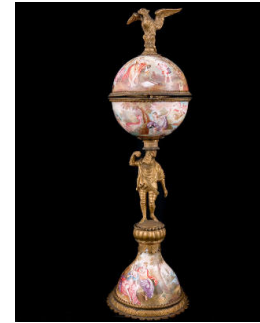
Basic Report



Title: Mantle Clock
Date: c. 1889-1900
Medium: iron; bronze; porcelain; glass



Title: Mantel Clock
Primary Maker: Unknown
English
Medium: bronze and glass



Title: Watch Stand
Primary Maker: Unknown
German
Medium: metal; porcelain; enamel



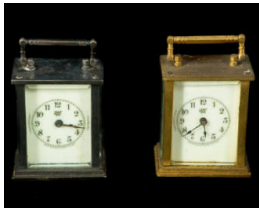
Title: Clock
Primary Maker: Unknown
German
Medium: enamel; metal



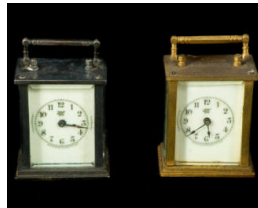
Title: Pocket Watch
Date: c. 1900
Primary Maker: A.M. Hill
Medium: gold (18K) with porcelain and glass



Title: Pocket Watch
Primary Maker: Elgin National Watch Company
Medium: metal, gold, and glass with enamel



Title: Carriage Clock
Primary Maker: Waterbury Clock Company
Medium: metal; porcelain; glass



Title: Carriage Clock
Primary Maker: Waterbury Clock Company
Medium: metal; silver



Title: Pocket Watch
Primary Maker: Waltham Watch Company
Medium: gold; porcelain; glass



Title: Miniature Clock Figurine
Medium: porcelain; metal



Title: Miniature Clock
Primary Maker: Unknown
French
Medium: metal; enamel; glass



Title: Mantle Clock
Primary Maker: Unknown
French
Medium: alabaster and bronze doré with glass and porcelain



Title: Mantle Clock
Date: 1903
Primary Maker: Unknown
French
Medium: porcelain and metal



Title: Mantle Clock
Date: c. 1900
Primary Maker: Dresden
Medium: porcelain with glass and brass