

Basic Report



Title: Green Aspen
Date: 1935
Primary Maker: Ernest Leonard Blumenschein
Medium: oil on canvas mounted to academy board



Title: The Extraordinary Affray
Date: 1926
Primary Maker: Ernest Leonard Blumenschein
Medium: oil on canvas



Title: Landscape with Blue Hills
Primary Maker: Ernest Leonard Blumenschein
Medium: oil on board



Title: Street Scene
Date: 1915
Primary Maker: Ernest Leonard Blumenschein
Medium: pastel and pencil on grey laid paper



Title: Plasterers of Taos
Date: 1932
Primary Maker: Ernest Leonard Blumenschein
Medium: oil on canvas



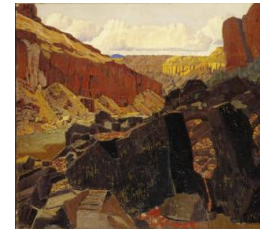
Title: Box Cars and Railroad Tracks
Primary Maker: Ernest Leonard Blumenschein
Medium: oil on canvas



Title: Mountains Near Taos
Date: 1955
Primary Maker: Ernest Leonard Blumenschein
Medium: oil on hardboard



Title: Hawk Shield, Medicine Man
Date: c. 1917
Primary Maker: Ernest Leonard Blumenschein
Medium: oil on canvas



Title: Canyon Red and Black
Date: 1933
Primary Maker: Ernest Leonard Blumenschein
Medium: oil on canvas



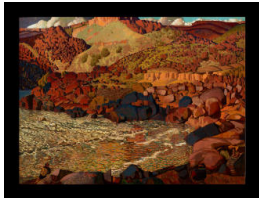
Title: Albuquerque Railroad Yards
Primary Maker: Ernest Leonard Blumenschein
Medium: watercolor and pen on paper



Title: Rocky Trail
Date: 1955
Primary Maker: Ernest Leonard Blumenschein
Medium: oil on canvas mounted to hardboard



Title: Taos Entertains the Cheyennes
Date: c. 1918
Primary Maker: Ernest Leonard Blumenschein
Medium: oil on canvas



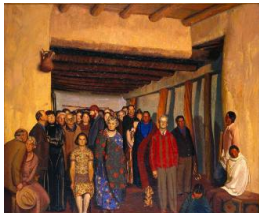
Title: Rio Grande Canyon
Primary Maker: Ernest Leonard Blumenschein
Medium: oil on canvas



Title: Untitled
Primary Maker: Ernest Leonard Blumenschein
Medium: oil on canvas



Title: Guide to Ourselves and Taos Neighbors
Date: 1957
Primary Maker: Ernest Leonard Blumenschein
Medium: pen and ink on paper



Title: Ourselves and Taos Neighbors
Date: c. 1940
Primary Maker: Ernest Leonard Blumenschein
Medium: oil on canvas



Title: The Chief Goes Through
Date: 1956
Primary Maker: Ernest Leonard Blumenschein
Medium: oil on canvas