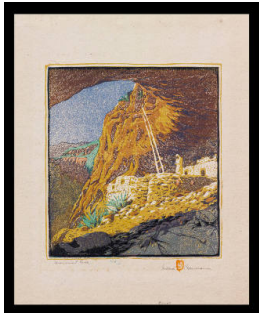
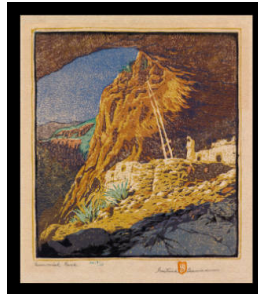


# Basic Report

---



**Title:** Ceremonial Cave  
**Date:** 1921  
**Primary Maker:** Gustave Baumann  
**Medium:** woodcut on wove buff rag paper



**Title:** Ceremonial Cave  
**Date:** 1921  
**Primary Maker:** Gustave Baumann  
**Medium:** woodcut on wove buff rag paper



**Title:** Pecos Valley  
**Date:** 1921  
**Primary Maker:** Gustave Baumann  
**Medium:** woodcut on wove buff rag paper



**Title:** Beginning of the Fiesta  
**Date:** 1920  
**Primary Maker:** Gustave Baumann  
**Medium:** woodcut on wove buff rag paper



**Title:** Rio Tesuque  
**Date:** 1939  
**Primary Maker:** Gustave Baumann  
**Medium:** woodcut on Zanders laid paper



**Title:** Sketch for Mountain Gold  
**Date:** 1918  
**Primary Maker:** Gustave Baumann  
**Medium:** Pencil and pastel on paper



**Title:** Mountain Gold (Black Wood Block)  
**Date:** 1920  
**Primary Maker:** Gustave Baumann  
**Medium:** basswood wood block



**Title:** Mountain Gold (Yellow Wood Block)  
**Date:** c. 1920  
**Primary Maker:** Gustave Baumann  
**Medium:** basswood wood block



**Title:** Mountain Gold (Blue Wood Block)  
**Date:** c. 1920  
**Primary Maker:** Gustave Baumann  
**Medium:** basswood wood block



**Title:** Mountain Gold  
**(Green Wood Block)**  
**Date:** c. 1920  
**Primary Maker:** Gustave  
Baumann  
**Medium:** basswood wood block



**Title:** Mountain Gold  
**(Gold Wood Block)**  
**Date:** c. 1920  
**Primary Maker:** Gustave  
Baumann  
**Medium:** basswood wood block



**Title:** Mountain Gold  
**(Black Proof)**  
**Date:** c. 1920  
**Primary Maker:** Gustave  
Baumann  
**Medium:** woodcut on flax fiber  
paper



**Title:** Mountain Gold  
**(Blue Proof)**  
**Date:** c. 1920  
**Primary Maker:** Gustave  
Baumann  
**Medium:** woodcut on flax fiber  
paper



**Title:** Mountain Gold  
**(Black, Blue and Yellow  
Proof)**  
**Date:** c. 1920  
**Primary Maker:** Gustave  
Baumann  
**Medium:** woodcut on flax fiber  
paper



**Title:** Mountain Gold  
**(Yellow Proof)**  
**Date:** c. 1920  
**Primary Maker:** Gustave  
Baumann  
**Medium:** woodcut on flax fiber  
paper



**Title:** Mountain Gold  
**(Gold Proof)**  
**Date:** c. 1920  
**Primary Maker:** Gustave  
Baumann  
**Medium:** woodcut on flax fiber  
paper



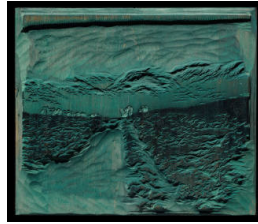
**Title:** Mountain Gold  
**(Black, Blue, Yellow and  
Gold Proof)**  
**Date:** c. 1920  
**Primary Maker:** Gustave  
Baumann  
**Medium:** woodcut on flax fiber  
paper



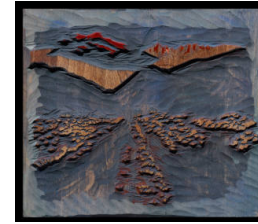
**Title:** Mountain Gold  
**(Green Proof)**  
**Date:** c. 1920  
**Primary Maker:** Gustave  
Baumann  
**Medium:** woodcut on flax fiber  
paper



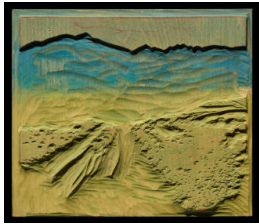
**Title:** Mountain Gold  
**Date:** c. 1920-1926  
**Primary Maker:** Gustave Baumann  
**Medium:** woodcut on flax fiber paper



**Title:** Bound for Taos  
**(Green Wood Block)**  
**Date:** 1930  
**Primary Maker:** Gustave Baumann  
**Medium:** basswood wood block



**Title:** Bound for Taos  
**(Purple Wood Block)**  
**Date:** 1930  
**Primary Maker:** Gustave Baumann  
**Medium:** basswood wood block



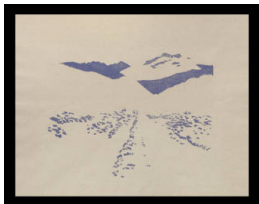
**Title:** Bound for Taos  
**(Yellow and Blue Wood Block)**  
**Date:** 1930  
**Primary Maker:** Gustave Baumann  
**Medium:** basswood wood block



**Title:** Bound for Taos,  
**Blue and Black Proof**  
**Date:** 1930-1936  
**Primary Maker:** Gustave Baumann  
**Medium:** color woodcut on flax fiber paper



**Title:** Bound for Taos  
**(Black Proof)**  
**Date:** 1930-1936  
**Primary Maker:** Gustave Baumann  
**Medium:** color woodcut on flax fiber paper



**Title:** Bound for Taos,  
**Purple Proof**  
**Date:** 1930-1936  
**Primary Maker:** Gustave Baumann  
**Medium:** color woodcut on flax fiber paper



**Title:** Bound for Taos,  
**Blue Proof**  
**Date:** 1930-1936  
**Primary Maker:** Gustave Baumann  
**Medium:** color woodcut on flax fiber paper



**Title:** Bound for Taos,  
**Black, Blue, Purple, and Green Proof**  
**Date:** 1936  
**Primary Maker:** Gustave Baumann  
**Medium:** color woodcut on flax fiber paper



**Title:** Bound for Taos  
(Black Wood Block)  
**Date:** 1930  
**Primary Maker:** Gustave  
Baumann  
**Medium:** basswood wood block



**Title:** Bound for Taos,  
Yellow and Blue Proof  
**Date:** 1930-1936  
**Primary Maker:** Gustave  
Baumann  
**Medium:** color woodcut on flax  
fiber paper



**Title:** Bound for Taos,  
Black, Blue, Purple Proof  
**Date:** 1936  
**Primary Maker:** Gustave  
Baumann  
**Medium:** color woodcut on flax  
fiber paper



**Title:** Bound for Taos,  
Black, Blue, Purple,  
Green and Ochre Proof  
**Date:** 1930-1936  
**Primary Maker:** Gustave  
Baumann  
**Medium:** color woodcut on flax  
fiber paper



**Title:** Bound for Taos  
(Blue Wood Block)  
**Date:** 1930  
**Primary Maker:** Gustave  
Baumann  
**Medium:** basswood wood block



**Title:** Strangers from  
Hopiland  
**Date:** 1921, printed mid-1930s  
**Primary Maker:** Gustave  
Baumann  
**Medium:** woodcut on flax fiber  
base paper



**Title:** Winter Corral  
**Date:** 1932-1942  
**Primary Maker:** Gustave  
Baumann  
**Medium:** woodcut on flax fiber  
paper



**Title:** Night of the Fiesta,  
Taos  
**Date:** 1924, printed 1931-1932  
**Primary Maker:** Gustave  
Baumann  
**Medium:** woodcut on Zanders  
laid paper



**Title:** Bound for Taos  
(Green Wood Block)  
**Date:** 1930  
**Primary Maker:** Gustave  
Baumann  
**Medium:** basswood wood block





**Title:** Bound for Taos  
(Ochre Wood Block)  
**Date:** 1930  
**Primary Maker:** Gustave  
Baumann  
**Medium:** basswood wood block



**Title:** Bound for Taos,  
Green Proof  
**Date:** 1936  
**Primary Maker:** Gustave  
Baumann  
**Medium:** color woodcut on flax  
fiber paper



**Title:** Bound for Taos  
**Date:** 1930-1936  
**Primary Maker:** Gustave  
Baumann  
**Medium:** color woodcut on flax  
fiber paper



**Title:** Bound for Taos,  
Ochre Proof  
**Date:** 1930-1936  
**Primary Maker:** Gustave  
Baumann  
**Medium:** color woodcut on flax  
fiber paper



**Title:** Bound for Taos  
**Date:** 1930  
**Primary Maker:** Gustave  
Baumann  
**Medium:** pencil and watercolor  
on rice paper