

Basic Report



Title: Covered Compote
Date: c. 1879
Primary Maker: Gillinder & Sons
Medium: pressed glass



Title: Sauce Dish
Date: c. 1879
Primary Maker: Gillinder & Sons
Medium: pressed glass



Title: Water Goblet,
Westward Ho
Date: c. 1879
Primary Maker: Gillinder & Sons
Medium: pressed glass



Title: Sauce Bowl
Date: c. 1879
Primary Maker: Gillinder & Sons
Medium: pressed glass



Title: Friend Jake [To
Jacob H. Hagenson]
Date: c. 1920
Primary Maker: Charles
Marion Russell
Medium: pen and ink, and
watercolor on paper



Title: Friend Schatzlein
[To Charles Schatzlein]
Date: October 22, 1909
Primary Maker: Charles
Marion Russell
Medium: pen and ink, and
watercolor on paper



**Title: Friend Schatzlein
[To Charles Schatzlein]**

Date: October 22, 1909

Primary Maker: Charles
Marion Russell

Medium: pen and ink, and
watercolor on paper



**Title: Platter With Deer
Handles, Westward Ho**

Date: c. 1879

Primary Maker: Gillinder &
Sons

Medium: glass



Title: Platter

Date: c. 1879

Primary Maker: Gillinder &
Sons

Medium: pressed glass



Title: Platter

Date: c. 1879

Primary Maker: Gillinder &
Sons

Medium: pressed glass



Title: Platter

Date: c. 1879

Primary Maker: Gillinder &
Sons

Medium: pressed glass

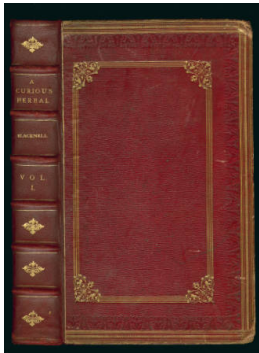


**Title: Intermediate
Stages of Bloom**

Date: 1854

Primary Maker: William Sharp

Medium: Chromolithograph on
paper



Title: A Curious Herbal

Date: 1737

Primary Maker: Elizabeth
Blackwell

Medium: copper plate
engraving on paper; hand-
colored

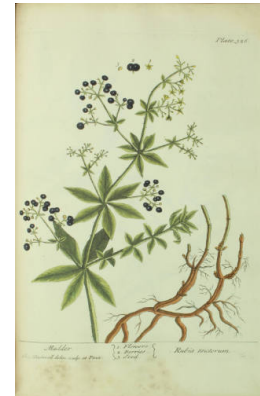


**Title: The Orange Tree.
Aurantia.**

Date: 1739

Primary Maker: Elizabeth
Blackwell

Medium: copper plate
engraving on paper; hand-
colored



**Title: Madder. Rubia
tinctorum.**

Date: 1739

Primary Maker: Elizabeth
Blackwell

Medium: copper plate
engraving on paper; hand-
colored



Title: Would or Dyer's Weed. Luteola.

Date: 1739

Primary Maker: Elizabeth Blackwell

Medium: copper plate engraving on paper; hand-colored



Title: Thorn-apple. Stramonium.

Date: 1739

Primary Maker: Elizabeth Blackwell

Medium: copper plate engraving on paper; hand-colored



Title: Red, Wild, or Corn poppy. Papaver rubrum.

Date: 1737

Primary Maker: Elizabeth Blackwell

Medium: copper plate engraving on paper; hand-colored



Title: White Lilly. Lilium album.

Date: 1737

Primary Maker: Elizabeth Blackwell

Medium: copper plate engraving on paper; hand-colored



Title: May-Weed, or Faetid Camomile. Cotula faetida.

Date: 1737

Primary Maker: Elizabeth Blackwell

Medium: copper plate engraving on paper; hand-colored



Title: Garden Flower de-luce. Iris nostras hortensis.

Date: 1737

Primary Maker: Elizabeth Blackwell

Medium: copper plate engraving on paper; hand-colored



Title: Vervein. Verbena and Verbenaca.

Date: 1737

Primary Maker: Elizabeth Blackwell

Medium: copper plate engraving on paper; hand-colored



Title: Aurantia

Date: 1760

Primary Maker: Elizabeth Blackwell

Medium: Engraving



Title: Mimulus Aurantiacus. Orange Monkey-Flower.

Date: 1796-97

Primary Maker: William Curtis

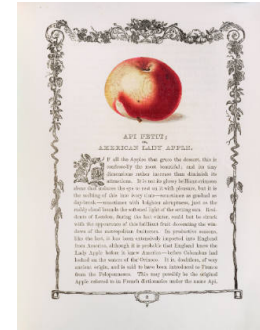
Medium: Engraving



Title: The Sun Vow
Date: 1899, cast after 1900
Primary Maker: Hermon Atkins MacNeil
Medium: cast bronze



Title: Scarlet Nonpareil
Primary Maker: Benjamin Maund
Medium: engraving on paper, hand-colored



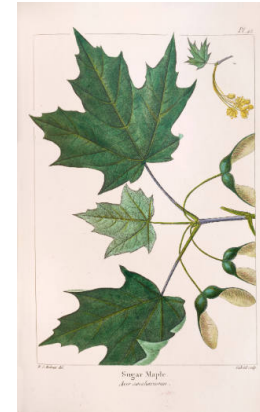
Title: Api Petit; or American Lady Apple
Primary Maker: Benjamin Maund
Medium: engraving on paper, hand-colored



Title: White Maple
Date: 1871
Primary Maker: François André Michaux
Medium: Engraving



Title: Red-Flowering Maple
Date: 1871
Primary Maker: François André Michaux
Medium: Engraving



Title: Sugar Maple
Date: 1871
Primary Maker: François André Michaux
Medium: Engraving



Title: Black Sugar Maple
Date: 1871
Primary Maker: François André Michaux
Medium: engraving



Title: Dogwood
Date: 1871
Primary Maker: François André Michaux
Medium: engraving



Title: Wild Orange Tree
Date: 1871
Primary Maker: Thomas Nuttall
Medium: lithograph on paper, hand-colored



Title: Cordia Sebestena
Date: 1871
Primary Maker: Thomas Nuttall
Medium: lithograph on paper, hand-colored



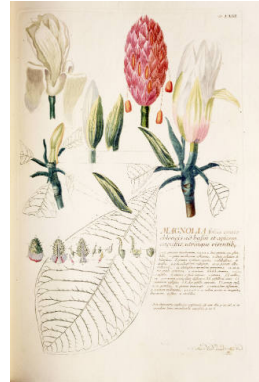
Title: Liliun candidum
Date: 1827
Primary Maker: Pierre Joseph Redouté
Medium: stipple engraving in color on paper, hand-colored



Title: Hibiscus Syriacus
Date: 1827
Primary Maker: Pierre Joseph Redouté
Medium: stipple engraving in color on paper, hand-colored



Title: New Illustration of the Sexual System of Carolus Von Linnaeus: Comprehending An Elucidation of the Several Parts of the Fructification: A Prize Dissertation on the Sexes of Plants; A Full Explanation of the Classes, and Order, of the Sexual System:
Date: 1799-1807
Primary Maker: Robert John Thornton
Medium: mezzotint, aquatint, stipple and line engraving on paper, color and hand-coloring; bound in full green levant morocco, panelled spine, gilt edges



Title: Plantae Selectae
Date: 1750-1773
Primary Maker: Christoph Jacob Trew
Medium: engraving on paper, hand-colored; mezzotint



Title: Gorteria Rigens
Date: 1809
Primary Maker: Philip Miller
Medium: engraving on paper, hand-colored