

# Basic Report

---



**Title:** Pitcher  
**Primary Maker:** Herculaneum Pottery  
**Medium:** creamware with transfer print



**Title:** Pitcher  
**Date:** c. 1800  
**Primary Maker:** Herculaneum Pottery  
**Medium:** creamware with transfer print



**Title:** Platter  
**Date:** c. 1844  
**Primary Maker:** Ralph & James Clews  
**Medium:** ironstone with blue transfer print



**Title:** Pitcher  
**Date:** 1908  
**Medium:** earthenware



**Title:** Platter  
**Date:** c. 1850  
**Primary Maker:** Podmore, Walker & Company  
**Medium:** ironstone with black transfer print



**Title:** Sauceboat  
**Primary Maker:** Staffordshire  
**Medium:** earthenware with transfer print



**Title:** Vase  
**Date:** c. 1920  
**Primary Maker:** Saxon Porcelain Manufactory  
**Medium:** porcelain with enamel



**Title:** Plate  
**Date:** 1834-1859  
**Primary Maker:** Podmore, Walker & Company  
**Medium:** ironstone with black transfer print



**Title:** Seated Lady  
**Primary Maker:** François Protheau  
**Medium:** cast bronze



**Title: Plate**  
**Date:** c. 1840  
**Primary Maker:** Staffordshire  
**Medium:** ironstone



**Title: Plate**  
**Date:** c. 1840  
**Primary Maker:** Staffordshire  
**Medium:** ironstone with black transfer print



**Title: Plate**  
**Primary Maker:** J. & G. Meakin  
**Medium:** ironstone with purple transfer print



**Title: Pitcher**  
**Date:** c. 1850  
**Primary Maker:** Staffordshire  
**Medium:** earthenware with transfer print



**Title: Plate**  
**Date:** c. 1822 - 1841  
**Primary Maker:** Staffordshire  
**Medium:** earthenware with red transfer print



**Title: Tureen Lid**  
**Primary Maker:** Staffordshire  
**Medium:** earthenware with blue transfer print



**Title: Tureen**  
**Primary Maker:** Staffordshire  
**Medium:** earthenware with blue transfer print



**Title: Urn**  
**Date:** 1756  
**Primary Maker:** Manufacture Nationale de Sèvres  
**Medium:** porcelain; bronze



**Title: Dante**  
**Medium:** bronze; ivory; marble



**Title: Sculpture**  
**Medium:** bronze; ivory; marble



**Title: Henry IV Enfant (Copy)**  
**Medium:** cast bronze



**Title: Pitcher**  
**Primary Maker:** Herculaneum Pottery  
**Medium:** creamware with transfer print



**Title: Pitcher**  
**Date:** September 1, 1840  
**Medium:** stoneware



**Title: Figurine**  
**Date:** 1815 - 1924  
**Primary Maker:** Meissen  
**Medium:** porcelain



**Title: Platter**  
**Date:** c. 1834 - 1859  
**Primary Maker:** Podmore, Walker & Company  
**Medium:** pearl stoneware; black and white transfer print



**Title: Plate**  
**Date:** c. 1840  
**Primary Maker:** Podmore, Walker & Company  
**Medium:** pearlstone with black transfer print



**Title: Fruit Bowl**  
**Date:** c. 1840  
**Primary Maker:** Podmore, Walker & Company  
**Medium:** pearlstone; purple transfer print



**Title: Teapot**  
**Primary Maker:** W. Wood & Company  
**Medium:** earthenware with transfer print



**Title: Tureen**  
**Primary Maker:** Staffordshire  
**Medium:** earthenware with transfer print



**Title: Plate**  
**Primary Maker:** Holdcroft & Company  
**Medium:** ironstone with black transfer print



**Title: Underplate**  
**Primary Maker:** Staffordshire  
**Medium:** earthenware with blue transfer print



**Title: Texian Campaign Plate**  
**Primary Maker:** James Beech  
**Medium:** earthenware with brown transfer print



**Title: Plate**  
**Primary Maker:** Ralph & James Clews  
**Medium:** earthenware with blue transfer print



**Title: Plate**  
**Primary Maker:** Ralph & James Clews  
**Medium:** earthenware with blue transfer print



**Title: Spill Holder**  
**Primary Maker:** Staffordshire  
**Medium:** earthenware



**Title: Plate**  
**Date:** 1878 - 1894  
**Primary Maker:** Staffordshire  
**Medium:** ironstone; flow blue transfer print



**Title: Urn**  
**Date:** 1753  
**Primary Maker:** Manufacture Nationale de Sèvres  
**Medium:** porcelain with bronze



**Title: Figurine**  
**Date:** c. 1900  
**Primary Maker:** Saxon  
Porcelain Manufactory  
**Medium:** porcelain



**Title: Figurine**  
**Date:** c. 1891  
**Primary Maker:** Saxon  
Porcelain Manufactory  
**Medium:** porcelain



**Title: Urn**  
**Date:** 1872-1901  
**Primary Maker:** Saxon  
Porcelain Manufactory  
**Medium:** porcelain



**Title: Vase**  
**Primary Maker:** K. Tächl  
**Medium:** porcelain



**Title: Pitcher**  
**Date:** c. 1880  
**Primary Maker:** W. Wood &  
Company  
**Medium:** stoneware



**Title: Plate**  
**Medium:** milk glass



**Title: Pitcher**  
**Medium:** earthenware with  
lustre and transfer print



**Title: Sculpture**  
**Medium:** cast bronze



**Title: Harmony of Waves**  
**Medium:** cast bronze



**Title: Pitcher**

**Medium:** earthenware with transfer print and lustre



**Title: Sculpture**

**Medium:** cast bronze with marble



**Title: Plate**

**Medium:** milk glass



**Title: Cameo Brooch**

**Medium:** shell and gold



**Title: Frances Ann Lutcher**

**Date:** c. 1910  
**Primary Maker:** August Benziger  
**Medium:** oil on canvas



**Title: Figurine**

**Date:** 1774-1814  
**Primary Maker:** Meissen  
**Medium:** porcelain



**Title: Crest of the Wave**

**Date:** 1925  
**Primary Maker:** Harriet Whitney Frishmuth  
**Medium:** cast bronze



**Title: Tureen Lid**

**Primary Maker:** Staffordshire  
**Medium:** earthenware with transfer print



**Title: Sauceboat**

**Primary Maker:** Staffordshire  
**Medium:** earthenware with transfer print



**Title: Castle Figurine**  
**Primary Maker:** Staffordshire  
**Medium:** earthenware



**Title: Sculpture**  
**Date:** c. 1900  
**Primary Maker:** Louis-Alexandre Bottee  
**Medium:** cast bronze with marble base



**Title: William Henry Stark**  
**Date:** c. 1930  
**Primary Maker:** Wayman Adams  
**Medium:** oil on canvas



**Title: Vase**  
**Primary Maker:** K. Scholz  
**Medium:** porcelain



**Title: Sculpture**  
**Date:** c. 1878  
**Primary Maker:** O. L. Wein  
**Medium:** cast bronze



**Title: Sculpture**  
**Medium:** cast bronze



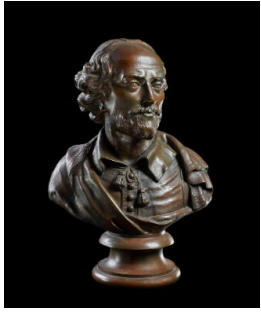
**Title: The Pose**  
**Date:** c. 1920  
**Medium:** bronze and ivory with marble



**Title: Sculpture**  
**Date:** c. 1920  
**Medium:** bronze and ivory with marble



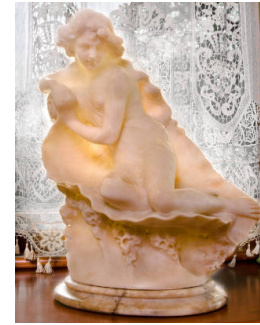
**Title: John Milton**  
**Medium:** cast bronze



**Title: William Shakespeare**  
**Medium:** cast bronze



**Title: Tureen**  
**Date:** 1829-1845  
**Primary Maker:** Charles James Mason & Company  
**Medium:** earthenware with transfer print



**Title: Lady in the Waves Statue**  
**Medium:** marble



**Title: Napoleon's Retreat from Russia**  
**Primary Maker:** Antonio Vanetti  
**Medium:** cast bronze with white marble base



**Title: The Christ Child**  
**Primary Maker:** François Raoul Larche  
**Medium:** cast bronze



**Title: Platter**  
**Date:** 1829 - 1845  
**Primary Maker:** Mason's Ironstone China  
**Medium:** earthenware with pink transfer print



**Title: Tureen Lid**  
**Date:** 1829-1845  
**Primary Maker:** Charles James Mason & Company  
**Medium:** earthenware with transfer print