

Basic Report



Title: Pitcher
Primary Maker: Herculaneum Pottery
Medium: creamware with transfer print



Title: Pitcher
Date: c. 1800
Primary Maker: Herculaneum Pottery
Medium: creamware with transfer print



Title: Platter
Date: c. 1844
Primary Maker: Ralph & James Clews
Medium: ironstone with blue transfer print



Title: Pitcher
Date: 1908
Medium: earthenware



Title: Platter
Date: c. 1850
Primary Maker: Podmore, Walker & Company
Medium: ironstone with black transfer print



Title: Tureen
Date: 1829-1845
Primary Maker: Staffordshire
Medium: earthenware with transfer print



Title: Sauceboat
Primary Maker: Staffordshire
Medium: earthenware with transfer print



Title: Vase
Date: c. 1920
Primary Maker: Saxon Porcelain Manufactory
Medium: porcelain with enamel



Title: Plate
Date: 1834-1859
Primary Maker: Podmore, Walker & Company
Medium: ironstone with black transfer print



Title: Seated Lady
Primary Maker: François
Protheau
Medium: cast bronze



Title: Plate
Date: c. 1840
Primary Maker: Staffordshire
Medium: ironstone



Title: Plate
Date: c. 1840
Primary Maker: Staffordshire
Medium: ironstone with black
transfer print



Title: Plate
Primary Maker: J. & G. Meakin
Medium: ironstone with purple
transfer print



Title: Pitcher
Date: c. 1850
Primary Maker: Staffordshire
Medium: earthenware with
transfer print



Title: Plate
Date: c. 1822 - 1841
Primary Maker: Staffordshire
Medium: earthenware with red
transfer print



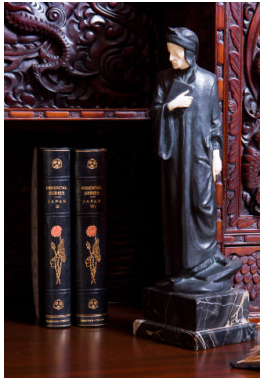
Title: Tureen Lid
Primary Maker: Staffordshire
Medium: earthenware with
blue transfer print



Title: Tureen
Primary Maker: Staffordshire
Medium: earthenware with
blue transfer print



Title: Urn
Date: 1756
Primary Maker: Manufacture
Nationale de Sèvres
Medium: porcelain; bronze



Title: Dante
Medium: bronze; ivory; marble



Title: Sculpture
Medium: bronze; ivory; marble



Title: Henry IV Enfant (Copy)
Medium: cast bronze



Title: Pitcher
Primary Maker: Herculaneum Pottery
Medium: creamware with transfer print



Title: Pitcher
Date: September 1, 1840
Medium: stoneware



Title: Covered Compote
Date: c. 1879
Primary Maker: Gillinder & Sons
Medium: pressed glass



Title: Sauce Dish
Date: c. 1879
Primary Maker: Gillinder & Sons
Medium: pressed glass



Title: Water Goblet, Westward Ho
Date: c. 1879
Primary Maker: Gillinder & Sons
Medium: pressed glass



Title: Sauce Bowl
Date: c. 1879
Primary Maker: Gillinder & Sons
Medium: pressed glass



Title: Figurine
Date: 1815 - 1924
Primary Maker: Meissen
Medium: porcelain



Title: Platter
Date: c. 1834 - 1859
Primary Maker: Podmore, Walker & Company
Medium: pearl stoneware; black and white transfer print



Title: Plate
Date: c. 1840
Primary Maker: Podmore, Walker & Company
Medium: pearlstone with black transfer print



Title: Fruit Bowl
Date: c. 1840
Primary Maker: Podmore, Walker & Company
Medium: pearlstone; purple transfer print



Title: Teapot
Primary Maker: W. Wood & Company
Medium: earthenware with transfer print



Title: Tureen
Primary Maker: Staffordshire
Medium: earthenware with transfer print



Title: Plate
Primary Maker: Holdcroft & Company
Medium: ironstone with black transfer print



Title: Underplate
Primary Maker: Staffordshire
Medium: earthenware with blue transfer print



Title: Texian Campaign Plate
Primary Maker: James Beech
Medium: earthenware with brown transfer print



Title: Plate

Primary Maker: Ralph & James Clews

Medium: earthenware with blue transfer print



Title: Plate

Primary Maker: Ralph & James Clews

Medium: earthenware with blue transfer print



Title: Platter

Date: 1829 - 1845

Primary Maker: Staffordshire

Medium: earthenware with pink transfer print



Title: Spill Holder

Primary Maker: Staffordshire

Medium: earthenware



Title: Plate

Date: 1878 - 1894

Primary Maker: Staffordshire

Medium: ironstone; flow blue transfer print



Title: Urn

Date: 1753

Primary Maker: Manufacture Nationale de Sèvres

Medium: porcelain with bronze



Title: Figurine

Date: c. 1900

Primary Maker: Saxon Porcelain Manufactory

Medium: porcelain



Title: Figurine

Date: c. 1891

Primary Maker: Saxon Porcelain Manufactory

Medium: porcelain



Title: Urn

Date: 1872-1901

Primary Maker: Saxon Porcelain Manufactory

Medium: porcelain



Title: Friend Jake [To Jacob H. Hagenson]

Date: c. 1920

Primary Maker: Charles Marion Russell

Medium: pen and ink, and watercolor on paper



Title: Friend Schatzlein [To Charles Schatzlein]

Date: October 22, 1909

Primary Maker: Charles Marion Russell

Medium: pen and ink, and watercolor on paper



Title: Friend Schatzlein [To Charles Schatzlein]

Date: October 22, 1909

Primary Maker: Charles Marion Russell

Medium: pen and ink, and watercolor on paper



Title: Vase

Primary Maker: K. Tächl

Medium: porcelain



Title: Pitcher

Date: c. 1880

Primary Maker: W. Wood & Company

Medium: stoneware



Title: Plate

Medium: milk glass



Title: Pitcher

Medium: earthenware with lustre and transfer print



Title: Sculpture

Medium: cast bronze



Title: Harmony of Waves

Medium: cast bronze



Title: Pitcher

Medium: earthenware with transfer print and lustre



Title: Sculpture

Medium: cast bronze with marble



Title: Plate

Medium: milk glass



Title: Cameo Brooch

Medium: shell and gold



Title: Frances Ann Lutch

Date: c. 1910
Primary Maker: August Benziger
Medium: oil on canvas



Title: Figurine

Date: 1774-1814
Primary Maker: Meissen
Medium: porcelain



Title: Platter With Deer Handles, Westward Ho

Date: c. 1879
Primary Maker: Gillinder & Sons
Medium: glass



Title: Platter

Date: c. 1879
Primary Maker: Gillinder & Sons
Medium: pressed glass

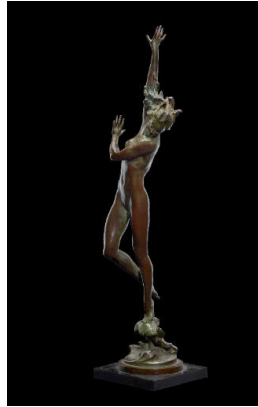


Title: Platter

Date: c. 1879
Primary Maker: Gillinder & Sons
Medium: pressed glass



Title: Platter
Date: c. 1879
Primary Maker: Gillinder & Sons
Medium: pressed glass



Title: Crest of the Wave
Date: 1925
Primary Maker: Harriet Whitney Frishmuth
Medium: cast bronze



Title: Tureen Lid
Date: 1829-1845
Primary Maker: Staffordshire
Medium: earthenware with transfer print



Title: Tureen Lid
Primary Maker: Staffordshire
Medium: earthenware with transfer print



Title: Sauceboat
Primary Maker: Staffordshire
Medium: earthenware with transfer print



Title: Castle Figurine
Primary Maker: Staffordshire
Medium: earthenware



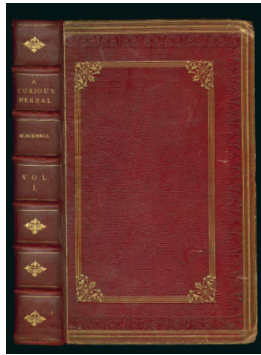
Title: Sculpture
Date: c. 1900
Primary Maker: Louis-Alexandre Bottee
Medium: cast bronze with marble base



Title: William Henry Stark
Date: c. 1930
Primary Maker: Wayman Adams
Medium: oil on canvas



Title: Intermediate Stages of Bloom
Date: 1854
Primary Maker: William Sharp
Medium: Chromolithograph on paper



Title: A Curious Herbal
Date: 1737
Primary Maker: Elizabeth Blackwell
Medium: copper plate engraving on paper; hand-colored



Title: The Orange Tree. Aurantia.
Date: 1739
Primary Maker: Elizabeth Blackwell
Medium: copper plate engraving on paper; hand-colored



Title: Madder. Rubia tinctorum.
Date: 1739
Primary Maker: Elizabeth Blackwell
Medium: copper plate engraving on paper; hand-colored



Title: Would or Dyer's Weed. Luteola.
Date: 1739
Primary Maker: Elizabeth Blackwell
Medium: copper plate engraving on paper; hand-colored



Title: Thorn-apple. Stramonium.
Date: 1739
Primary Maker: Elizabeth Blackwell
Medium: copper plate engraving on paper; hand-colored



Title: Red, Wild, or Corn poppy. Papaver rubrum.
Date: 1737
Primary Maker: Elizabeth Blackwell
Medium: copper plate engraving on paper; hand-colored



Title: White Lilly. Lilium album.
Date: 1737
Primary Maker: Elizabeth Blackwell
Medium: copper plate engraving on paper; hand-colored



Title: May-Weed, or Fetid Camomile. Cotula foetida.
Date: 1737
Primary Maker: Elizabeth Blackwell
Medium: copper plate engraving on paper; hand-colored



Title: Garden Flower de-luce. Iris nostras hortensis.
Date: 1737
Primary Maker: Elizabeth Blackwell
Medium: copper plate engraving on paper; hand-colored



Title: Vervain. Verbena and Verbenaca.
Date: 1737
Primary Maker: Elizabeth Blackwell
Medium: copper plate engraving on paper; hand-colored



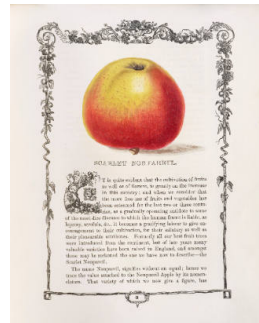
Title: Aurantia
Date: 1760
Primary Maker: Elizabeth Blackwell
Medium: Engraving



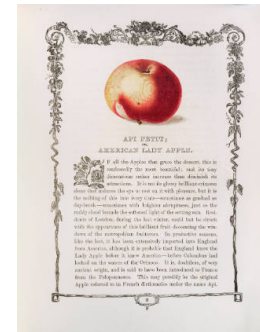
Title: Mimulus Aurantiacus. Orange Monkey-Flower.
Date: 1796-97
Primary Maker: William Curtis
Medium: Engraving



Title: The Sun Vow
Date: 1899, cast after 1900
Primary Maker: Hermon Atkins MacNeil
Medium: cast bronze



Title: Scarlet Nonpareil
Primary Maker: Benjamin Maund
Medium: engraving on paper, hand-colored



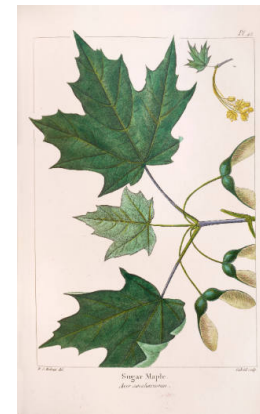
Title: Api Petit; or American Lady Apple
Primary Maker: Benjamin Maund
Medium: engraving on paper, hand-colored



Title: White Maple
Date: 1871
Primary Maker: François André Michaux
Medium: Engraving



Title: Red-Flowering Maple
Date: 1871
Primary Maker: François André Michaux
Medium: Engraving



Title: Sugar Maple
Date: 1871
Primary Maker: François André Michaux
Medium: Engraving



Title: Black Sugar Maple
Date: 1871
Primary Maker: François
 André Michaux
Medium: engraving



Title: Dogwood
Date: 1871
Primary Maker: François
 André Michaux
Medium: engraving



Title: Wild Orange Tree
Date: 1871
Primary Maker: Thomas
 Nuttall
Medium: lithograph on paper,
 hand-colored



Title: Cordia Sebestena
Date: 1871
Primary Maker: Thomas
 Nuttall
Medium: lithograph on paper,
 hand-colored



Title: Lilium candidum
Date: 1827
Primary Maker: Pierre Joseph
 Redouté
Medium: stipple engraving in
 color on paper, hand-colored



Title: Hibiscus Syriacus
Date: 1827
Primary Maker: Pierre Joseph
 Redouté
Medium: stipple engraving in
 color on paper, hand-colored



Title: Vase
Primary Maker: K. Scholz
Medium: porcelain



Title: New Illustration of the Sexual System of Carolus Von Linnaeus: Comprehending An Elucidation of the Several Parts of the Fructification: A Prize Dissertation on the Sexes of Plants; A Full Explanation of the Classes, and Order, of the Sexual System:
Date: 1799-1807
Primary Maker: Robert John Thornton
Medium: mezzotint, aquatint, stipple and line engraving on paper, color and hand-coloring; bound in full green levant morocco, panelled spine, gilt edges



Title: Plantae Selectae
Date: 1750-1773
Primary Maker: Christoph Jacob Trew
Medium: engraving on paper, hand-colored; mezzotint



Title: Sculpture
Date: c. 1878
Primary Maker: O. L. Wein
Medium: cast bronze



Title: Sculpture
Medium: cast bronze



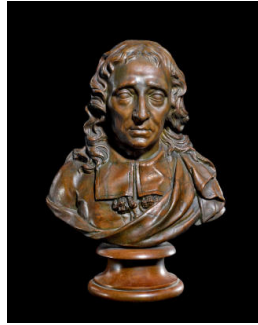
Title: The Pose
Date: c. 1920
Medium: bronze and ivory with marble



Title: Sculpture

Date: c. 1920

Medium: bronze and ivory with marble



Title: John Milton

Medium: cast bronze



Title: William Shakespeare

Medium: cast bronze



Title: Lady in the Waves Statue

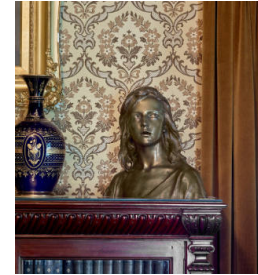
Medium: marble



Title: Napoleon's Retreat from Russia

Primary Maker: Antonio Vanetti

Medium: cast bronze with white marble base



Title: The Christ Child

Primary Maker: François Raoul Larche

Medium: cast bronze



Title: Gorteria Rigens

Date: 1809

Primary Maker: Philip Miller

Medium: engraving on paper, hand-colored